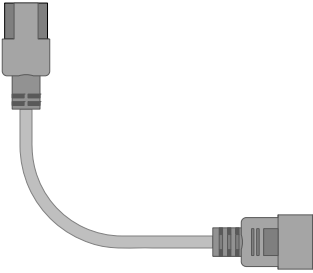




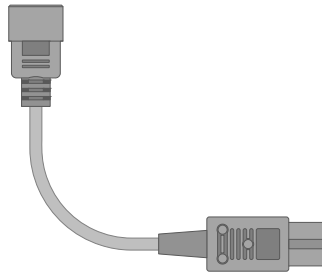
Powering and Connecting
Your World

POWER CORD STENCIL

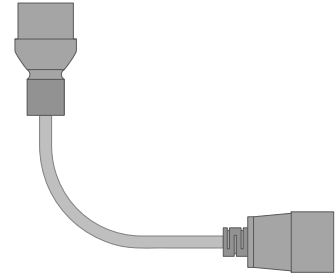
FOR USE WITH MICROSOFT VISIO



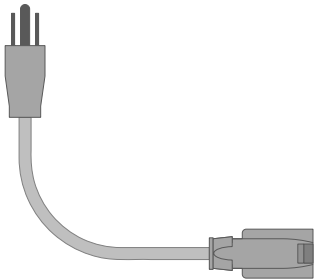
C13 to C14



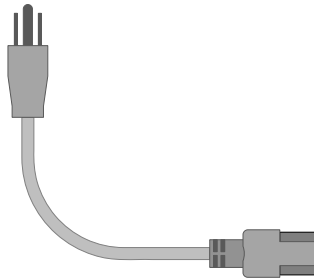
C14 to C15



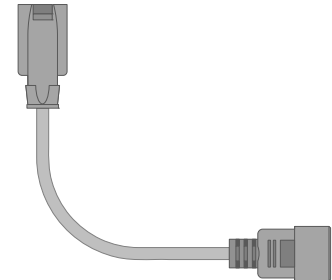
C19 to C20



NEMA 5-15P to NEMA 5-15R



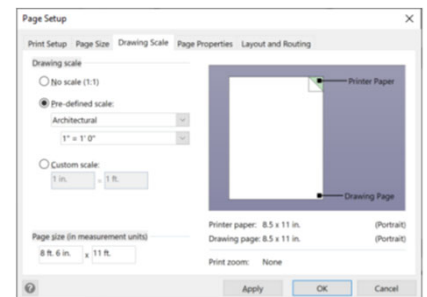
NEMA 5-15P to C13



NEMA 5-15R to C14

This Power Cord Stencil is part of a suite of stencils created to help Tripp Lite customers accurately design and document IT racks. This stencil is especially helpful when communicating complex power schemes to an installer, for example, when loads are split between two power banks.

IMPORTANT: Rack layout diagrams typically have a scale of 1"=1'-0". These power cords were drawn to actual size and will display well on a Visio page with an appropriate scaling applied.



INSTALLATION

1. Open Microsoft Visio.
2. From the Stencils palette, select **More Shapes > My Shapes > Organize My Shapes**.
3. Copy the Power Cords stencil file (.vss or .vsx) to your **My Shapes** folder.

TIPS FOR USE

1. Cords behave like regular Visio connectors: choose right-angled, straight or curved.
2. Right-click on a cord and select Edit Text to add a Part Number. Using the Pointer Tool, drag the yellow handle to the desired text position.
3. Use the Pointer Tool to connect a cord to a device. Select a cord shape and use the white/grey handles to drag the connector to the device's connection point.