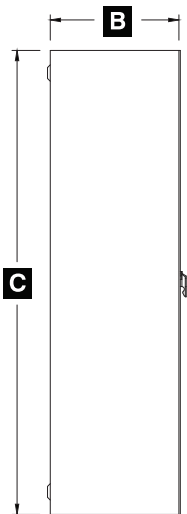
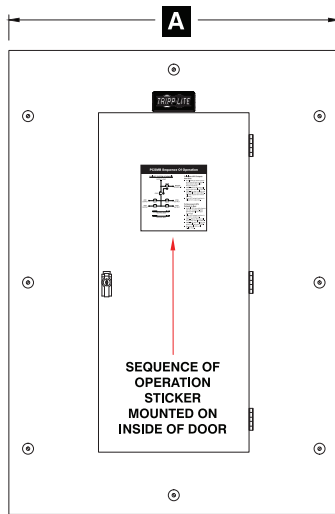


# Tripp Lite International Parallel Tie Cabinet with Bypass Panel

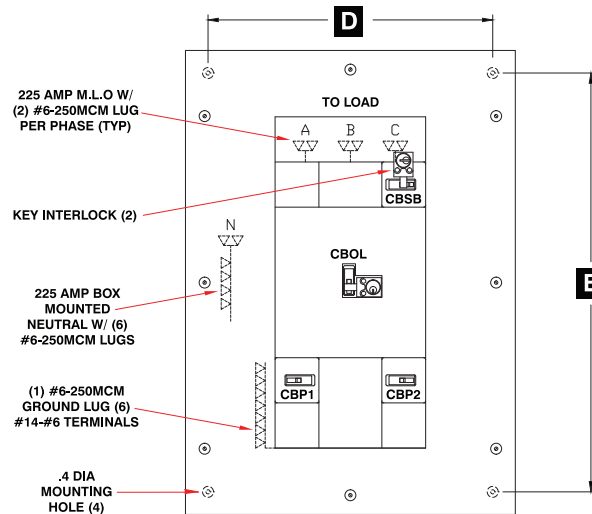
Model #	Compatible UPS System	Ship Dimensions (HWD) (cm)	Shipping (kg)	Unit Dimensions (cm)					Unit Weight (kg)	Design Voltage	Breaker Amps		Breaker KAIC	Kirk Key
				A	B	C	D	E			Bypass	Each UPS		
SUPR2MBP20KX	SU20KX	109.5 x 78.4 x 31.75	102	76.5	29.85	107.6	66	97.1	99.8	380/400/415	50	50	14	Yes
SUPC2MBP40KX	SU40KX	109.5 x 78.4 x 31.75	102	76.5	29.85	107.6	66	97.1	99.8	380/400/415	150	80	14	Yes
SUPR2MBP40KX	SU40KX	109.5 x 78.4 x 31.75	102	76.5	29.85	107.6	66	97.1	99.8	380/400/415	80	80	14	Yes
SUPC2MBP60KX	SU60KX	157.5 x 98.8 x 31.8	170.1	91.7	29.85	155.6	81.3	145.1	167.8	380/400/415	250	125	35	Yes
SUPR2MBP60KX	SU60KX	157.5 x 98.8 x 31.8	170.1	91.7	29.85	155.6	81.3	145.1	167.8	380/400/415	125	125	35	Yes
SUPC3MBP60KX	SU60KX	157.5 x 98.8 x 31.8	170.1	91.7	29.85	155.6	81.3	145.1	167.8	380/400/415	300	125	35	Yes
SUPR3MBP60KX	SU60KX	157.5 x 98.8 x 31.8	170.1	91.7	29.85	155.6	81.3	145.1	167.8	380/400/415	250	125	35	Yes
SUPC4MBP60KX	SU60KX	178.4 x 98.8 x 31.75	223	96.82	29.85	176.5	86.36	166	220	380/400/415	450	125	35	Yes
SUPR4MBP60KX	SU60KX	157.5 x 98.8 x 31.8	170.1	91.7	29.85	155.6	81.3	145.1	167.8	380/400/415	350	125	35	Yes
SUPC2MBP80KX	SU80KX	157.5 x 98.8 x 31.8	170.1	91.7	29.85	155.6	81.3	145.1	167.8	380/400/415	300	150	35	Yes
SUPR2MBP80KX	SU80KX	157.5 x 98.8 x 31.8	170.1	91.7	29.85	155.6	81.3	145.1	167.8	380/400/415	150	150	35	Yes
SUPC3MBP80KX	SU80KX	178.4 x 98.8 x 31.75	223	96.82	29.85	176.5	86.36	166	220	380/400/415	450	150	35	Yes
SUPR3MBP80KX	SU80KX	157.5 x 98.8 x 31.8	170.1	91.7	29.85	155.6	81.3	145.1	167.8	380/400/415	300	150	35	Yes
SUPC4MBP80KX	SU80KX	178.4 x 98.8 x 31.75	223	96.82	29.85	176.5	86.36	166	220	380/400/415	600	150	35	Yes
SUPR4MBP80KX	SU80KX	178.4 x 98.8 x 31.75	223	96.82	29.85	176.5	86.36	166	220	380/400/415	450	150	35	Yes



LEFT SIDE VIEW



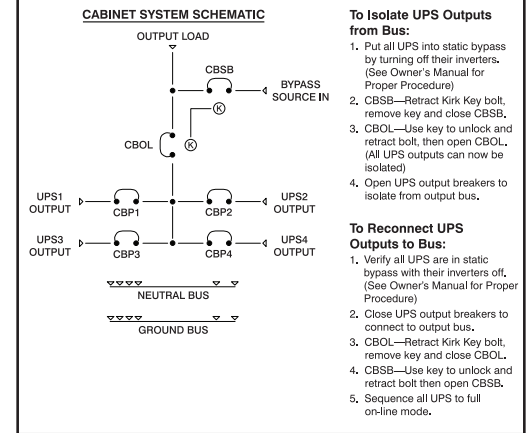
FRONT VIEW



FRONT VIEW (DOOR REMOVED)

## SEQUENCE OF OPERATION STICKER DETAIL

### PCSMB Sequence Of Operation



**PANEL TYPE:** CDP (UL 67 LISTED INTERIOR)

**SERVICE:** SEE TABLE ABOVE.

**ALTERNATE VOLTAGES:** 208V, 380/400/415V.

**ALTERNATE VOLTAGE STICKERS:** PROVIDE STICKERS WITH ALTERNATE VOLTAGES TO BE APPLIED IN FIELD AS REQUIRED. STICKERS INCLUDED IN BAG WITH KEYS.

**ENCLOSURE:** NEMA 1 (UL 50 LISTED ENCLOSURE)

**BOX:** 12 GAUGE PAINTED STEEL, NO KNOCKOUTS.

**TRIM:** 12 GAUGE PAINTED STEEL, HELD TO BOX WITH ADJUSTABLE TRIM CLAMPS—SURFACE MOUNTING.

**DOOR:** EQUIPPED WITH SIERRA GE1RH1 SNAPLOCK.

**FINISH:** GRAY POLYESTER POWDERCOAT APPLIED TO SURFACES TREATED WITH AN IRON PHOSPHATE AND CHROME FREE SEALER.

**BUS:** ELECTROLYTIC COPPER OF 98% CONDUCTIVITY, BASED ON 1000 AMPS PER SQUARE INCH DENSITY.

**WIRE BENDING GUTTER:** MEETS OR EXCEEDS NEC TABLES 312-6(a), 312-6(b).

**BREAKERS:** CUTLER-HAMMER THERMAL-MAGNETIC, 3 POLE, AS INDICATED: SEE TABLE ABOVE FOR BREAKER TYPE, AMPS.

**BREAKER TERMINAL LUG:** (2) 2/0-250MCM OR (1) 2/0-500MCM PER PHASE.

**KEY INTERLOCK:** KIRK TYPE F, CBSB LOCKED IN THE OPEN POSITION, CBOL LOCKED IN THE CLOSED POSITION.



**For more information, call  
Tripp Lite Customer Service at  
(773) 869-1313.**

Tripp Lite has a policy of continuous improvement. Specifications are subject to change without notice. Photos may differ slightly from actual product.