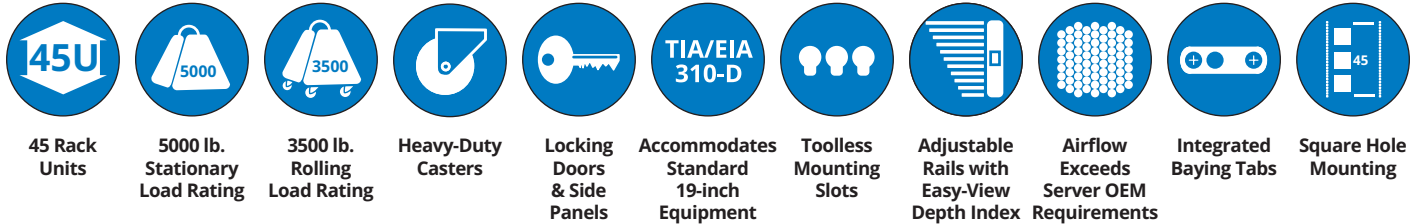
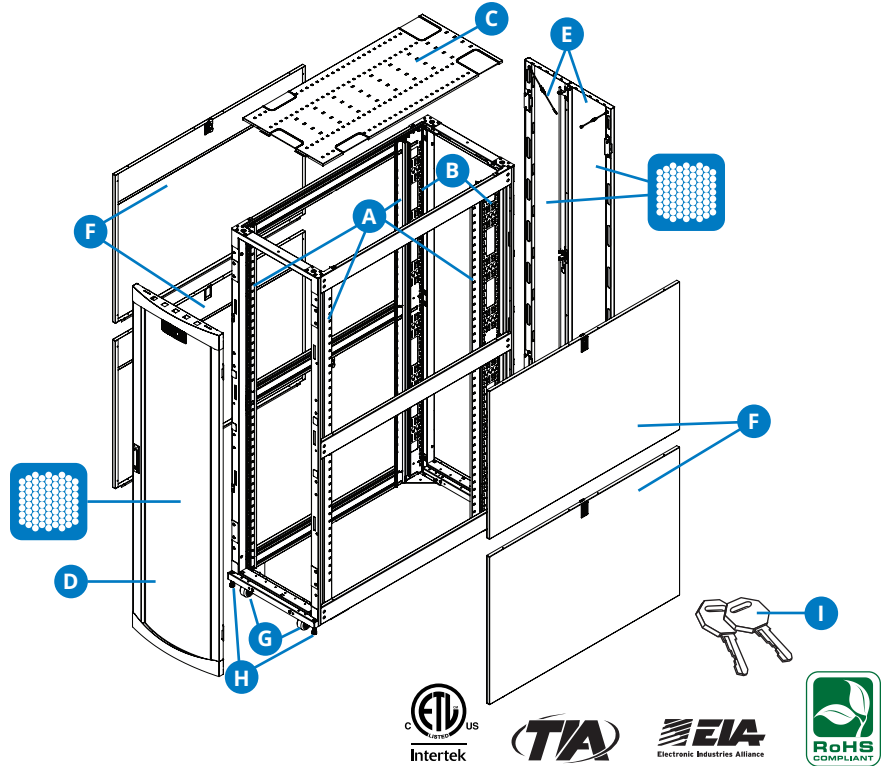


SmartRack 45U Extra-Deep, Standard-Width Heavy-Duty Rack Enclosure Cabinet, White (SRH452454W)



- A Adjustable Mounting Rails**
- B Adjustable PDU Mounting Rails with Toolless Mounting Slots**
- C Roof Panel** (Removable)
- D Front Door** (Lockable/Removable/Reversible)
- E Split Rear Doors** (Lockable/Removable)
- F Side Panels** (Lockable/Removable)
- G Heavy-Duty Casters**
- H Heavy-Duty Levelers**
- I Keys** (For doors and side panels)

Also Includes: Owner's manual, 2 stabilizing brackets and rackmount equipment mounting hardware (50 cage nuts, 50 mounting screws, 50 nylon cup washers)



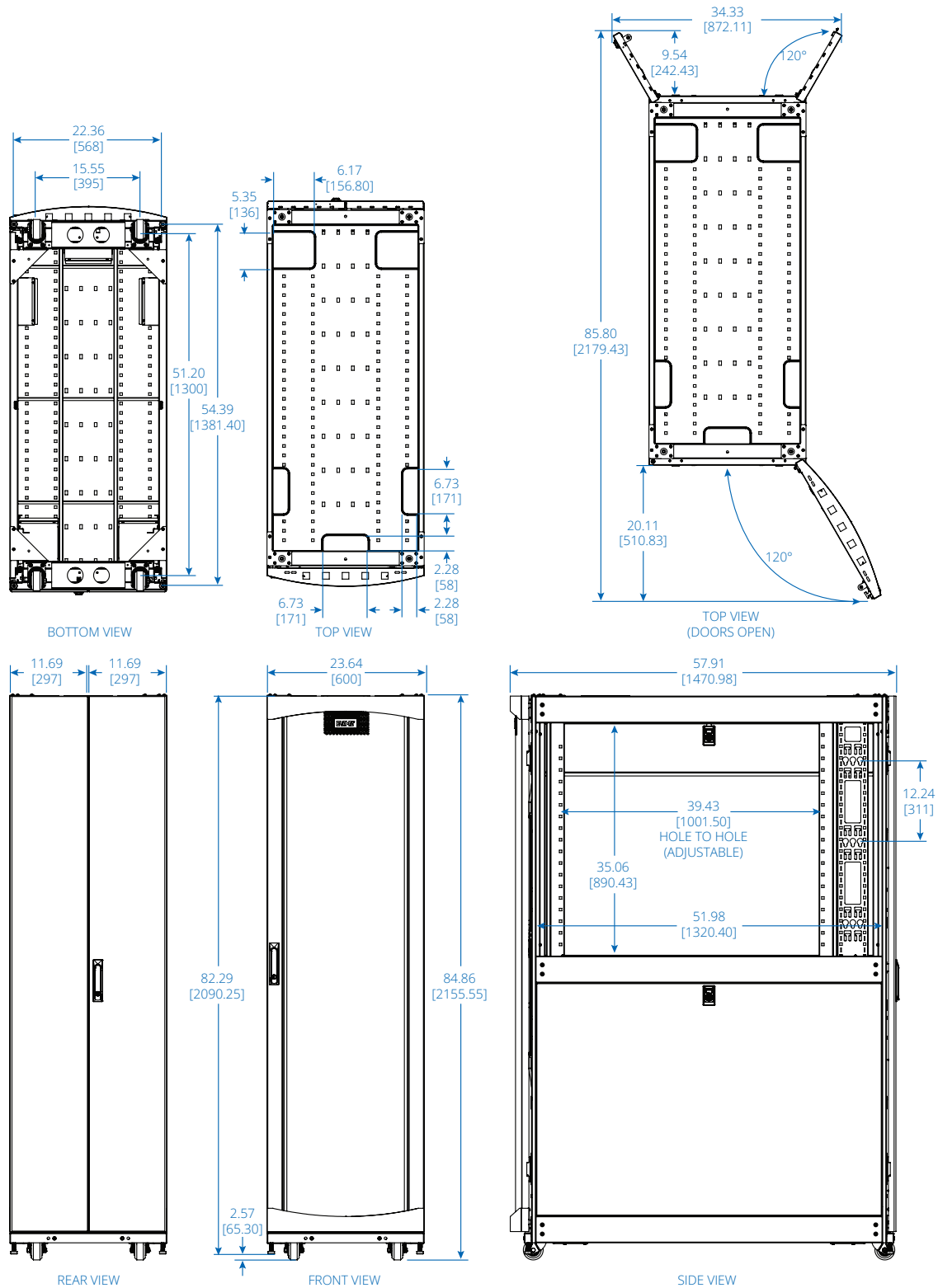
SPECIFICATIONS

| | |
|---------------------------------|--|
| Model | SRH452454W |
| Rack Spaces | 45U |
| Stationary Load Rating | 5000 lb. / 2268 kg |
| Rolling Load Rating | 3500 lb. / 1588 kg |
| Unit Dimensions [H x W x D] | 84.86 x 23.64 x 57.91 in. / 2155.55 x 600 x 1471 mm |
| Shipping Dimensions [H x W x D] | 90.5 x 33.5 x 60 in. / 2299 x 851 x 1524 mm |
| Unit Weight | 561 lb. / 254 kg |
| Certifications | UL 2416, CSA C22.2 No 62368-1, IEC 60297-3-100, DIN 41494, IP20, TIA/EIA-310-D (Accommodates all standard 19-inch rackmount equipment regardless of vendor.) |

Part numbers and specifications are subject to change.



Powering Business Worldwide



Dimensions: INCHES [mm]

Learn more at [Tripplite.Eaton.com](https://www.Tripplite.Eaton.com)



Powering Business Worldwide

Eaton
1000 Eaton Boulevard
Cleveland, OH 44122
United States
[Eaton.com](https://www.Eaton.com)

© 2024 Eaton
All Rights Reserved
Publication No. 24-06-033
August 2024

No part of this document may be reproduced in any way without the express written approval of Eaton.

Eaton reserves the right to change specifications without prior notice. Eaton is a registered trademark of Eaton. All other trademarks are properties of their respective companies.

Follow us on social media to get the latest product and support information.

