

# SmartRack® 5.5 kW Self-Cooling Server Rack

## Model: SRCOOL5KWRM42U

**1 Insulated 42U rack enclosure**

There is 27U available for mounting IT devices. Insulation helps keep cold air inside the enclosure. 1U blanking panels funnel the cold air to the IT equipment and ensures the cooling system works effectively.

*Note: The blanking panels must remain installed and only removed to accommodate installed IT equipment.*

**2 Emergency ventilation assembly**

If a system failure causes the internal temperature to reach 104° F (40° C), embedded thermal sensors trigger the lids to open and release the hot air.

**3 Clear acrylic window**

**4 7-inch touchscreen LCD**

Display supports intuitive navigation, control, monitoring and diagnostics.

**5 Locking doors**

**6 5.5 kW cooling unit**

Self-contained system does not require indoor-to-outdoor refrigerant piping, allowing easier deployment.

**7 Equipment mounting rails and cable management**

**8 Network management interface**

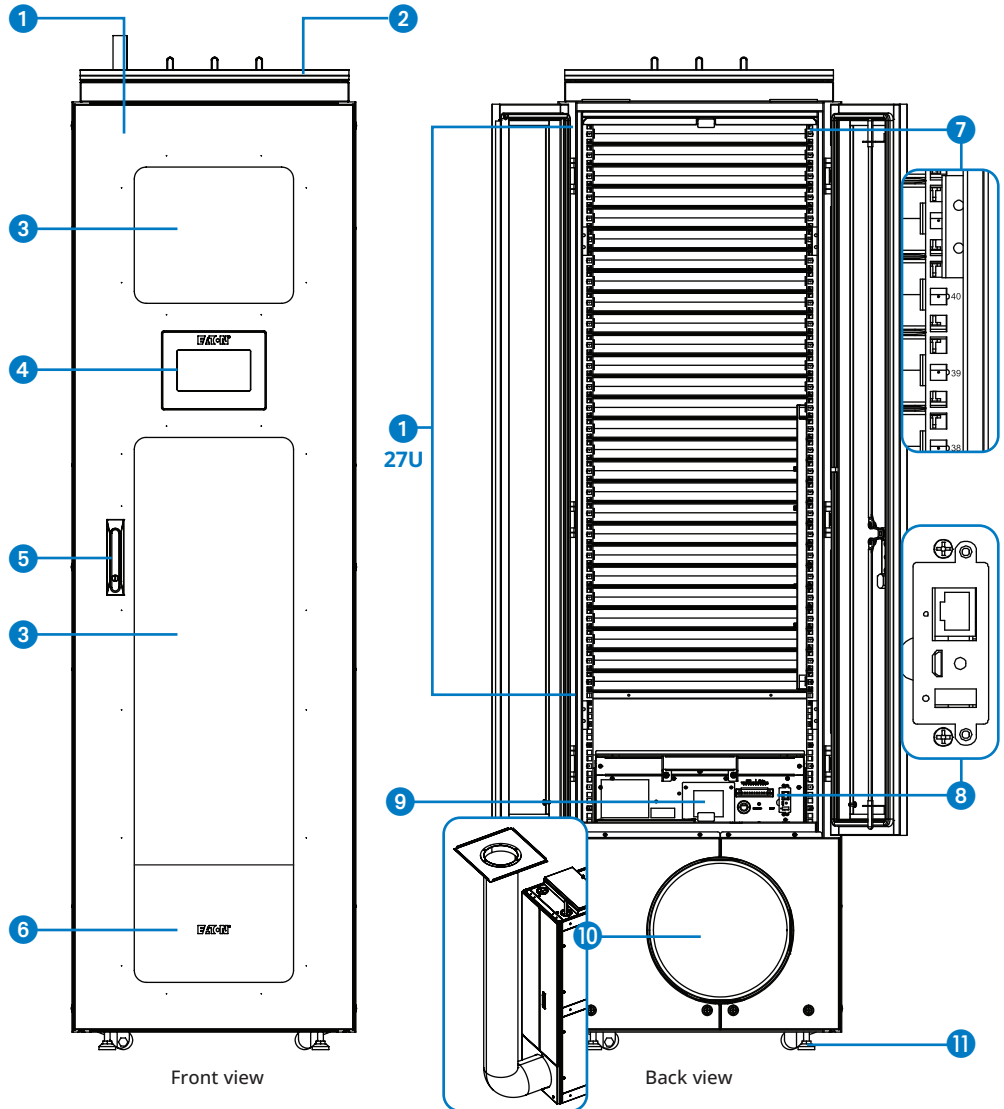
Built-in network management card enables SNMP-based remote monitoring, control and alerts. The card also supports EnviroSense temperature and humidity sensors.

**9 Power connection terminals**

**10 AC hot air outlet**

13 ft. flexible hot air exhaust duct and a duct adapter are included.

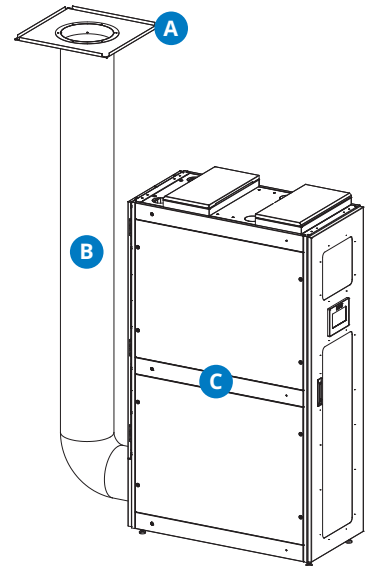
**11 Casters and leveling feet**



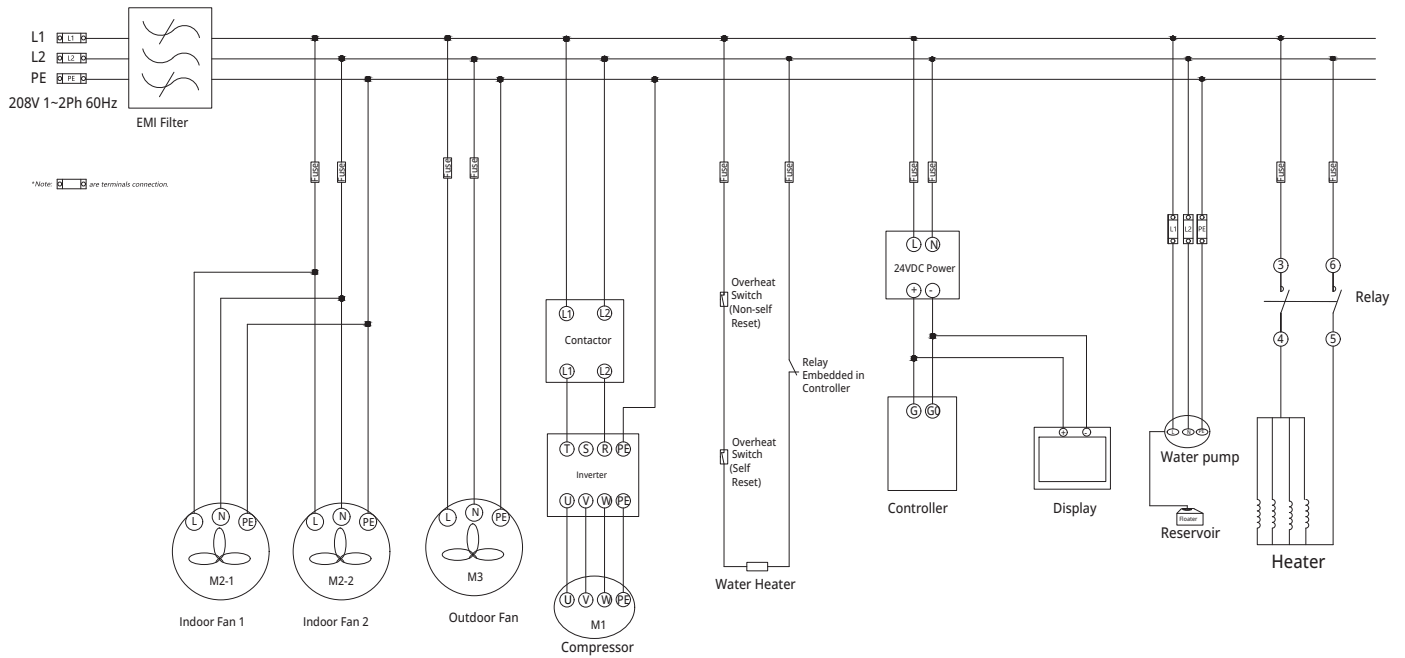
Powering Business Worldwide

## MAXIMUM CURRENT AND POWER CABLE CONFIGURATION

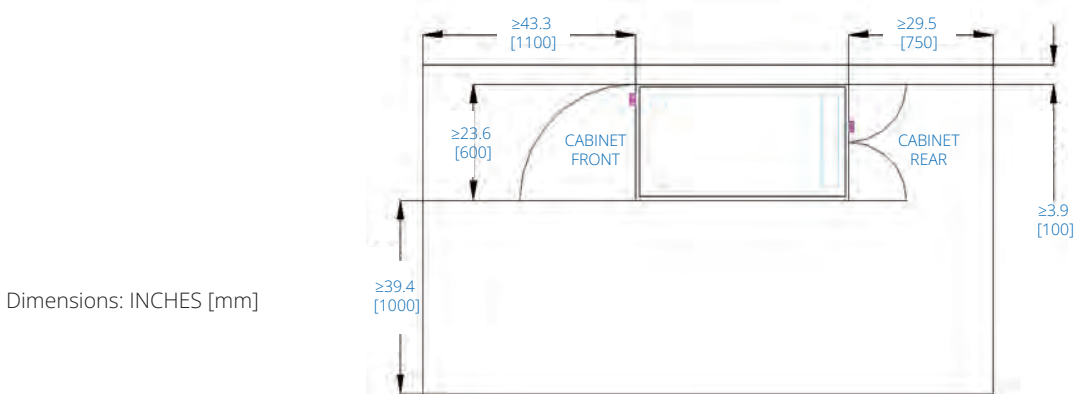
Input Voltage Range	Single-phase 208 -240V
Frequency	60 Hz
Full Load Current (FLA)	18A
Maximum Circuit Ampacity (MCA)	22A
Max Overcurrent Protection (MOP)	30A
Input Power Cable (L1)	10 AWG, 5.26 mm <sup>2</sup>
Input Power Cable (L2)	10 AWG, 5.26 mm <sup>2</sup>
Input Ground (GND) and Neutral (N) Cables	10 AWG, 5.26 mm <sup>2</sup>
Maximum Rejected Heat	7.5kW
Rated Cooling Capacity	5.5 kW (18.8 kBTU/h)
Air Circulation	470 ft. <sup>3</sup> /minute (13.3 m <sup>3</sup> /minute)
Refrigerant Type	R410A
Unit Dimensions: H x W x D in. (mm)	82.66 (2099.6) x 23.6 (599.4) x 47.26 (1200)
Packaged Unit Dimensions: H x W x D in. (mm)	90.47 (2298) x 29.13 (740) x 52.76 (1340)
Weight (lb./kg)	552.26 / 250.5
Packaged Unit Weight (lb./kg)	780.45 / 354
Floor Loading (lb./ft. <sup>2</sup> ) / (kg/m <sup>2</sup> )	71.26 / 347.92



## BLOCK DIAGRAM

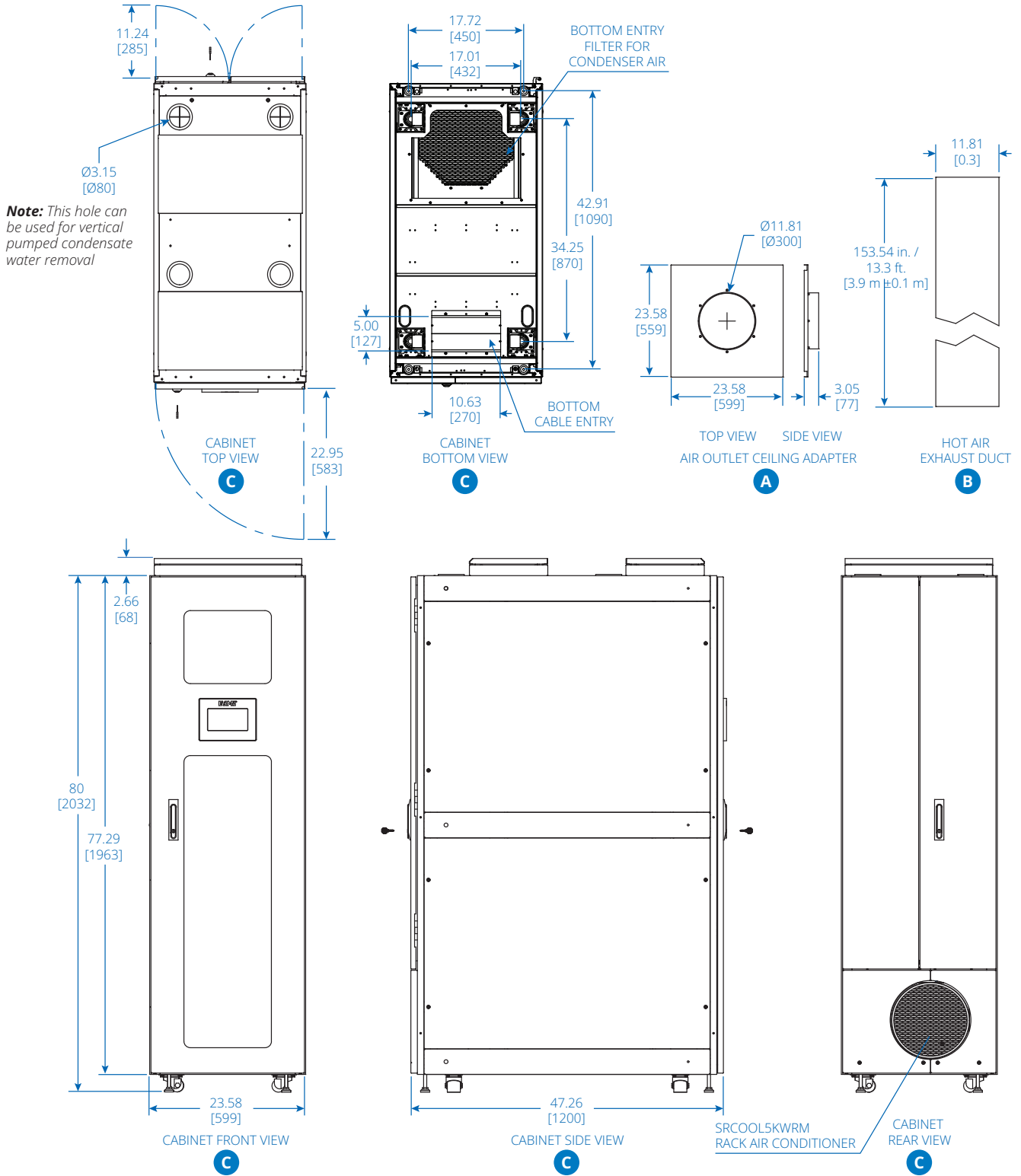


## INSTALLATION CLEARANCE DIAGRAM



Powering Business Worldwide

**SRCOOL5KWRM42U DIMENSIONS**



Dimensions: INCHES [mm]

Learn more at [Tripplite.Eaton.com](https://www.Tripplite.Eaton.com)



**Eaton**  
 1000 Eaton Boulevard  
 Cleveland, OH 44122  
 United States  
 Eaton.com

© 2024 Eaton  
 All Rights Reserved  
 Publication No. 23-11-155  
 September 2024

No part of this document may be reproduced in any way without the express written approval of Eaton.

Eaton reserves the right to change specifications without prior notice. Eaton is a registered trademark of Eaton. All other trademarks are properties of their respective companies.

Follow us on social media to get the latest product and support information.

