

MODEL:

PDU3XEVS6G20

3-Phase Switched Vertical Rack-Mount PDU



400V
3-Phase
Input



16/20A Red IEC
309 3P+N+E
Plug



230V
Single-Phase
Output



30 Outlets



11.5kW
Load
Capacity



Touchscreen
LCD



Network
Interface



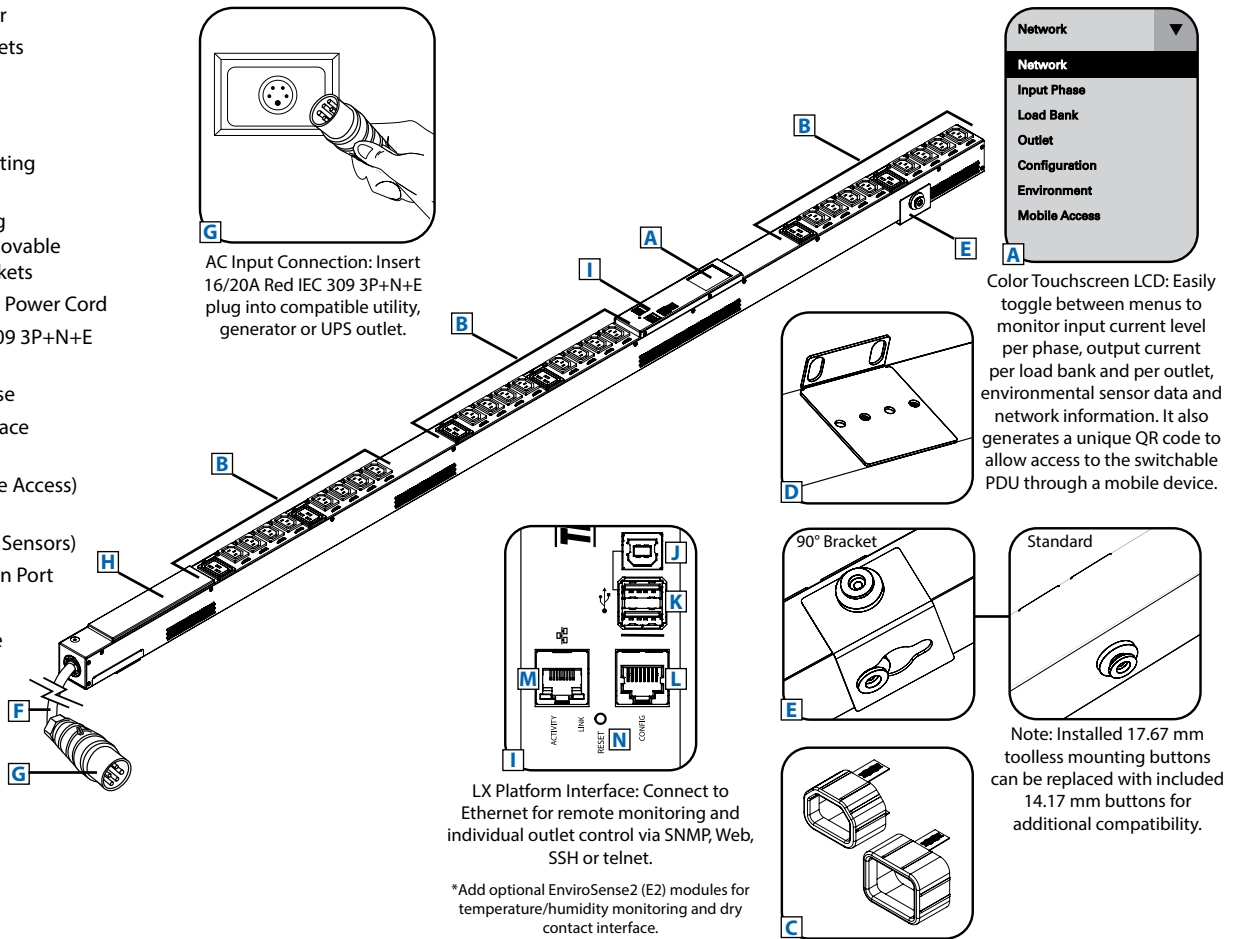
0U
Rack-mount



Toolless
Mounting
Buttons

- A** Digital Load Meter
- B** C13 and C19 Outlets with On/Off LEDs
- C** C13 and C19 Plug-Lock Inserts
- D** Removable Mounting Brackets
- E** Toolless Mounting Buttons with Removable 90° Rotation Brackets
- F** 6 ft. /1.83 m Input Power Cord
- G** 16/20A Red IEC 309 3P+N+E Input Plug
- H** Durable Metal Case
- I** LX Platform Interface
- J** USB-B Port (for Direct Console Access)
- K** USB-A Ports (for EnviroSense2 Sensors)
- L** RJ45 Configuration Port
- M** Ethernet Port
- N** Network Interface Reset Button

Not Shown: Configuration Cable, Owner's Manual



Specifications

Model	PDU3XEVS6G20
Voltage	400V 3-Phase Input/230V Single-Phase Output
Frequency	50/60 Hz
Load Capacity	11.5kW
Input Plug	16/20A Red IEC 309 3P+N+E
Input Cord Length	6 ft. / 1.83 m
Outlets	30 (24 C13 / 6 C19)
Primary Mounting Option	0U (Vertical) Rack-Mount
Unit Weight & Dimensions	14.5 lb. / 6.6 kg 70 x 2.17 x 2.86 in. / 1778 x 55 x 73 mm <i>See next page for detailed unit measurements.</i>
Certifications	Tested to UL60950-1, CSA, NOM, CE (EN60950-1), Class A, ROHS

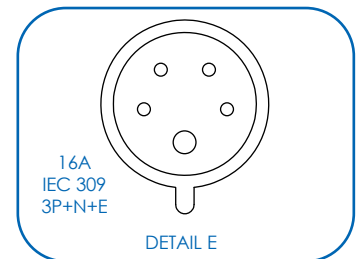
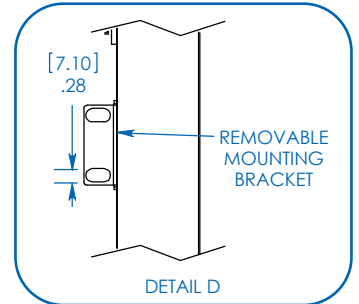
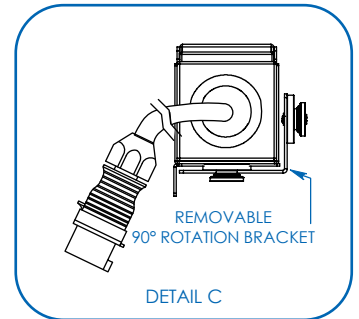
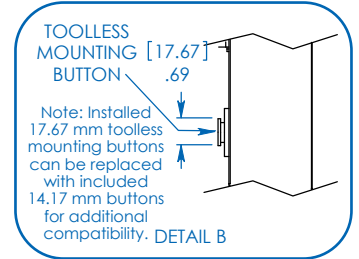
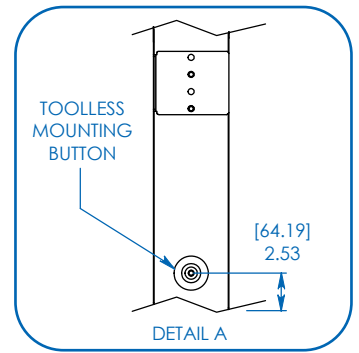
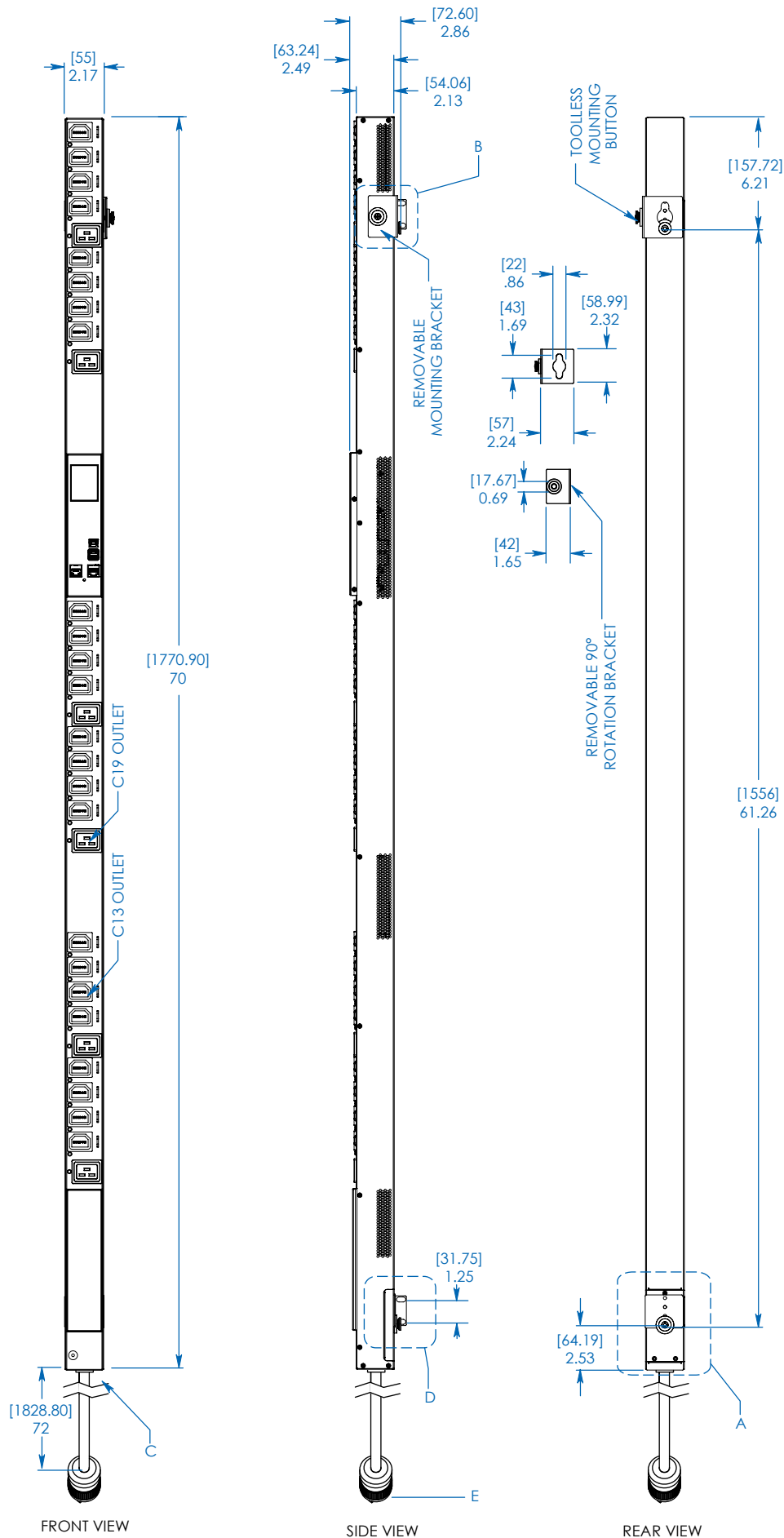


- Distributes power to 30 outlets (8 C13 & 2 C19 per phase)
- Java-free, HTML5-based network interface allows for remote monitoring and control via SNMP, Web, SSH or telnet
- Reports current for each **phase**, **bank**, and **outlet** in real-time
- Perfect for rack-mount server, network and telecom applications

SEE NEXT PAGE FOR DETAILED UNIT MEASUREMENTS



1111 W. 35th Street
Chicago, IL 60609 USA
773.869.1234
triplite.com



MODEL:
PDU3XEVSR6G20



1111 W. 35th Street
Chicago, IL 60609 USA
773.869.1234
triplite.com

Dimensions: [mm] INCHES

Tripp Lite has a policy of continuous improvement. Specifications are subject to change without notice. Photos and illustrations may differ slightly from actual products.