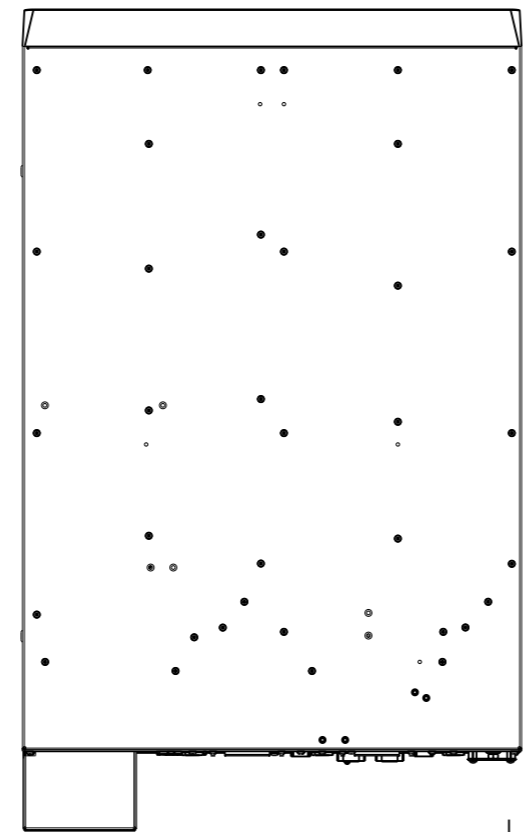
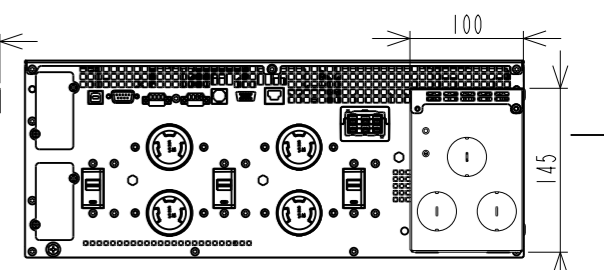
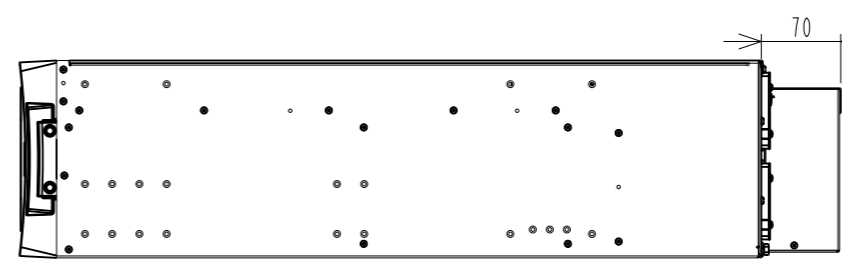
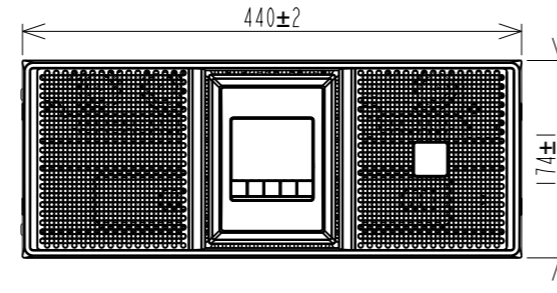
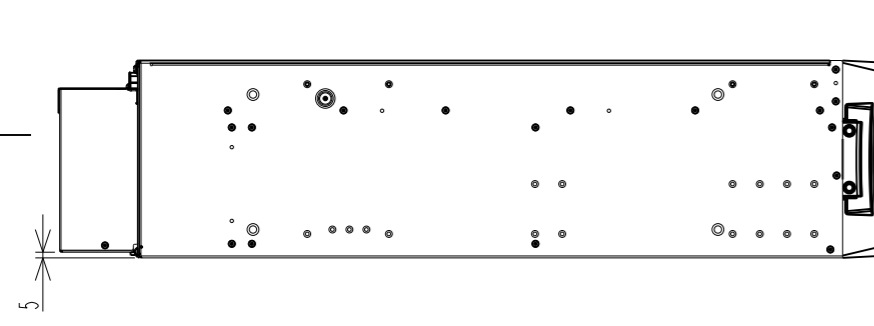
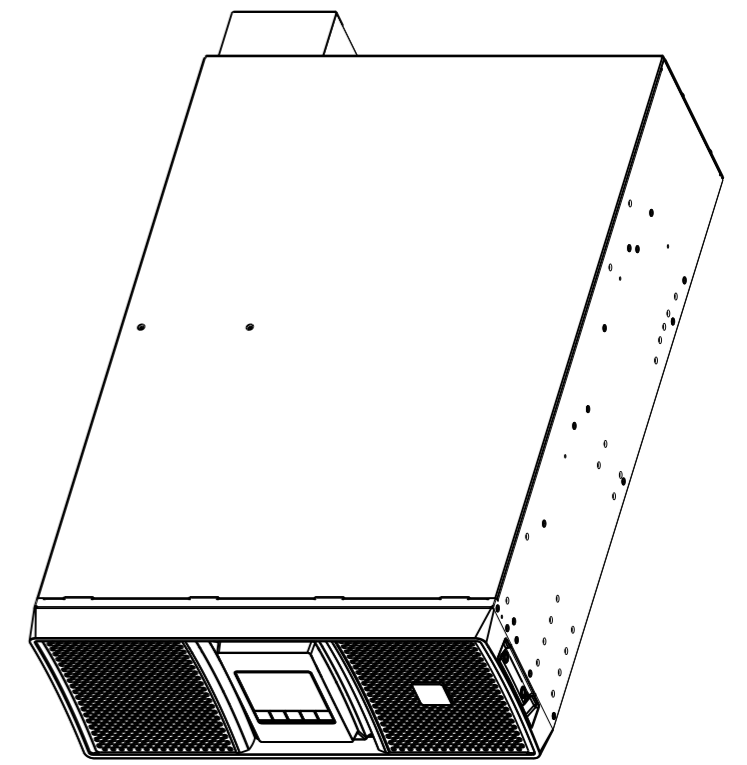
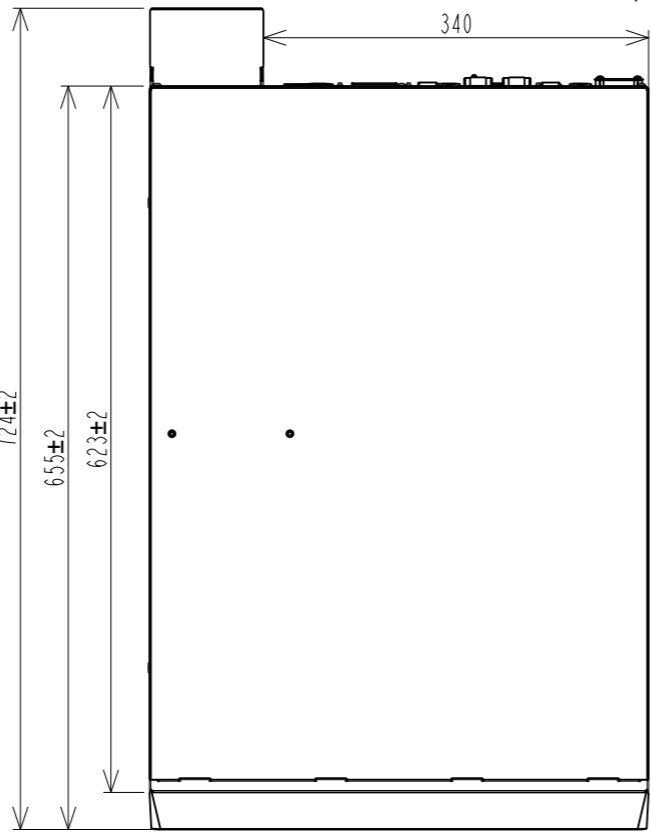


REV	DATE	ECO-CODE	MODIFICATION	PREPARED	APPROVED
00	04-Jan-2026		FIRST ISSUE	Xinwei Yang	Xin Su

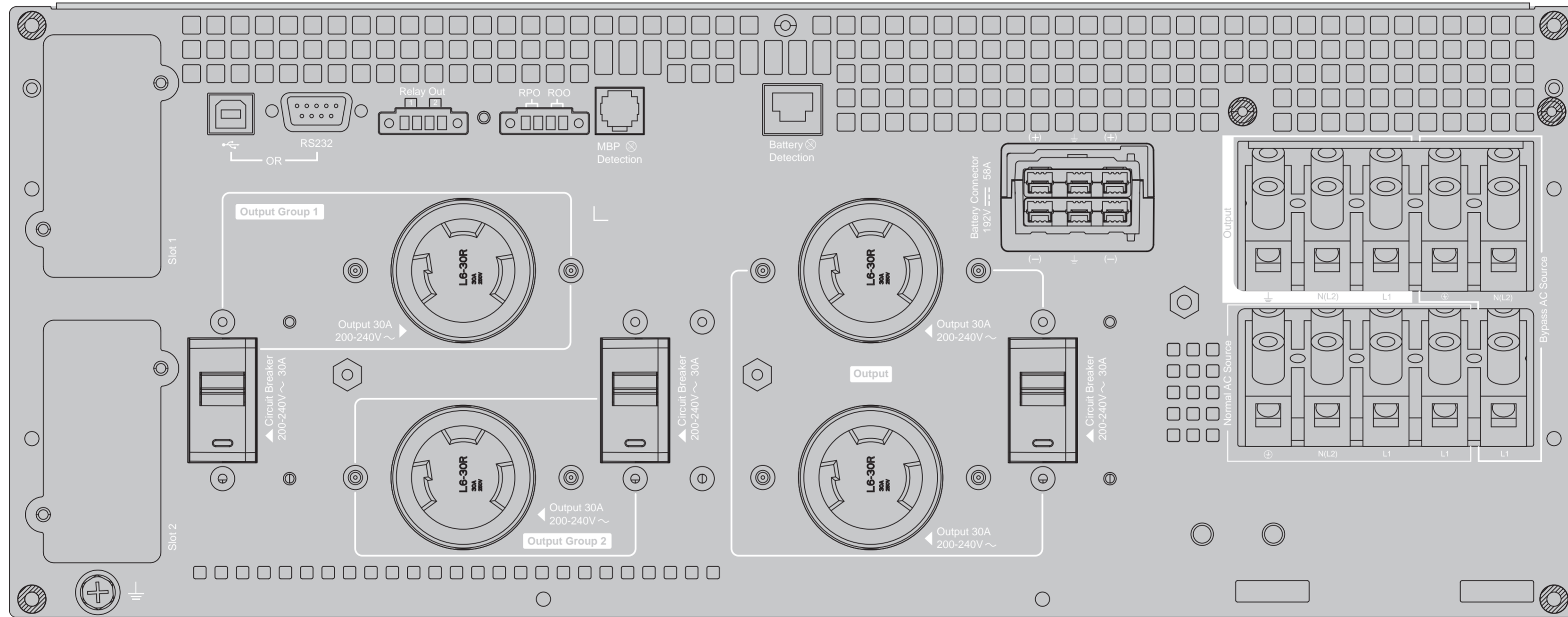


METRIC		EATON CORPORATION			
DIMENSIONS ARE IN MILLIMETERS AFTER PLATING. DIMENSIONS AND TOLERANCES IN ACCORDANCE WITH ASME Y14.5M-1994. SEE NOTES FOR TOLERANCES.					
DESCRIPTION: Eaton 9PX Li-Ion11000 RT4U G2					
ORIGINATED: Xinwei Yang	04-Jan-2026	ECO:	NAME: 9PX8KG2-L	REVISION: 00	SIZE: A3
MODIFIED: /	04-Jan-2026	DOCUMENT TYPE: PRO-E DRAWING	9PX11KG2-L	STATE: Released	SCALE: 0.150
CHECKED: /	04-Jan-2026				SHEET: 1 OF 2
SAFETY: /	04-Jan-2026				
APPROVED: Xin Su	04-Jan-2026				

EATON CORPORATION - CONFIDENTIAL AND PROPRIETARY
 NOTICE TO PERSONS RECEIVING THIS DOCUMENT AND/OR TECHNICAL INFORMATION
 THIS DOCUMENT, INCLUDING THE DRAWING AND INFORMATION CONTAINED THEREON, IS CONFIDENTIAL AND IS THE EXCLUSIVE PROPERTY OF EATON CORPORATION, AND IS MERELY ON LOAN AND SUBJECT TO RECALL BY EATON AT ANY TIME. BY TAKING POSSESSION OF THIS DOCUMENT, THE RECIPIENT ACKNOWLEDGES AND AGREES THAT THIS DOCUMENT CANNOT BE USED IN ANY MANNER ADVERSE TO THE INTERESTS OF EATON AND THAT NO PORTION OF THIS DOCUMENT MAY BE COPIED OR OTHERWISE REPRODUCED WITHOUT THE PRIOR WRITTEN CONSENT OF EATON. IN THE CASE OF CONFLICTING CONTRACTUAL PROVISIONS, THIS NOTICE SHALL GOVERN THE STATUS OF THIS DOCUMENT. © 2011 Eaton Corporation - All Rights Reserved.

NOTES:
 RCD: (xxx+/- .xxx) STD: .xxx+/- .xxx (ST) Key Dimension: *
 1 RCD: Required Control Dimension ,These Dimensions need Process control & capability(initial and ongoing), 100%inspection, poke yoke, etc.as appropriate.
 2 STD: Statistically Toleranced Dimension ,These Dimensions need demonstration of ongoing process capability (CpK/PpK).
 3 Key Dimension:These Dimensions are defined by ME/Mfg,and need inspection as appropriate. If you want more information,please review the criterions of <TC-RDW-18>and<TC-QAW-40>

REV.	DATE	ECO-CODE	Modification	Prepared	Approved



METRIC		THIRD ANGLE PROJECTION		EATON CORPORATION			
DIMENSIONS ARE IN MILLIMETERS AFTER PLATING. DIMENSIONS AND TOLERANCES IN ACCORDANCE WITH ASME Y14.5M-1994. SEE NOTES FOR TOLERANCES.							
DESCRIPTION: Eaton 9PX Li-Ion11000 RT4U G2							
ORIGINATED: Xinwei Yang	04-Jan-2026	ECO:	NAME:	REVISION: 00	SIZE: A2	SCALE: 1:1	
MODIFIED: /	04-Jan-2026	CHECKED: /	04-Jan-2026	DOCUMENT TYPE: PRO-E DRAWING	STATE: Released	SHEET: 2 OF 2	
SAFETY: /	04-Jan-2026	APPROVED: Xin Su	04-Jan-2026	EATON CORPORATION - CONFIDENTIAL AND PROPRIETARY			
NOTICE TO PERSONS RECEIVING THIS DOCUMENT AND/OR TECHNICAL INFORMATION: THIS DOCUMENT, INCLUDING THE DRAWING AND INFORMATION CONTAINED THEREON, IS CONFIDENTIAL AND IS THE EXCLUSIVE PROPERTY OF EATON CORPORATION, AND IS MERELY ON LOAN AND SUBJECT TO RECALL BY EATON AT ANY TIME. BY TAKING POSSESSION OF THIS DOCUMENT, THE RECIPIENT ACKNOWLEDGES AND AGREES THAT THIS DOCUMENT CANNOT BE USED IN ANY MANNER ADVERSE TO THE INTERESTS OF EATON AND THAT NO PORTION OF THIS DOCUMENT MAY BE COPIED OR OTHERWISE REPRODUCED WITHOUT THE PRIOR WRITTEN CONSENT OF EATON. IN THE CASE OF CONFLICTING CONTRACTUAL PROVISIONS, THIS NOTICE SHALL GOVERN THE STATUS OF THIS DOCUMENT.							