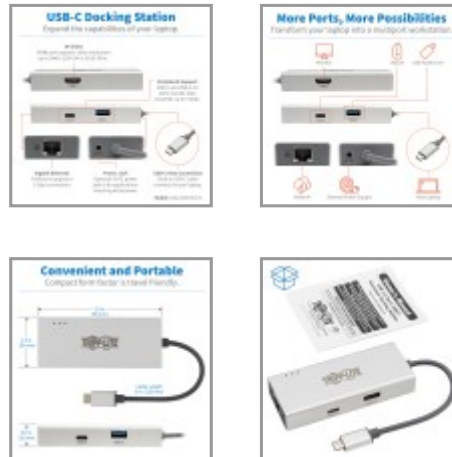


USB-C Dock - 4K HDMI, USB 3.x (5Gbps), USB-A/USB-C Hub, GbE

MODEL NUMBER: U442-DOCK13-S



USB-C dock adds 4K HDMI, USB-A, USB-C and Ethernet ports to your laptop or tablet's USB-C or Thunderbolt 3 port.

Features

USB-C Docking Station Turns Your Device's USB-C or Thunderbolt 3 Port into a Workstation This multiport USB-C dock expands the potential of your Windows laptop, Chromebook, tablet or other device with a USB-C or Thunderbolt 3 port. It's ideal for connecting to a wired Gigabit Ethernet network, transmitting digital audio and video to a large display, and adding a thumb drive or other USB peripheral—all at the same time.

Supports USB-C DisplayPort Alternate Mode for Transmitting Audio/Video Signals By connecting the built-in USB-C cable to a source device that supports USB DisplayPort Alt Mode, you can output 4K video and digital audio to a compatible monitor, television or projector without installing special software drivers.

Transmits Crystal-Clear 4K Video and Digital Audio The HDMI port supports Ultra HD video resolutions up to 3840 x 2160 (4K x 2K) at 30 Hz. A DVI display may also be connected using an HDMI to DVI adapter (sold separately). HDCP 2.2 compliance allows you to stream 4K Amazon and Netflix content with no complications.

Accesses a Wired Gigabit Ethernet Network The RJ45 port offers access to a Gigabit Ethernet network when no Wi-Fi is available or when a wired connection offers faster speeds. Connect using a UTP cable (sold separately), and enjoy true 10/100/1000 Mbps Ethernet speeds for fast data transfers.

USB Ports Connect Keyboards, Thumb Drives and Other USB Peripherals The USB-A and USB-C hub ports accept up to USB peripherals, such as flash drives, mice, keyboards and printers. They support fast USB 3.2 Gen 1 data transfer rates up to 5 Gbps and are backward compatible with USB 2.0 and USB 1.1 devices. Note: Host must support USB OTG (On-the-Go).

Built-In USB-C Cable Connects in Either Direction Connect the reversible USB-C plug to your source device's USB-C or Thunderbolt 3 port. The fumble-free USB-C plug connects in either direction to ensure fast, easy connection every time.

Ready to Use Right Out of the Package The plug-and-play USB-C dock is specifically designed for use with Windows laptops and other notebooks, smartphones, tablets and devices equipped with a USB-C or Thunderbolt 3 port. It requires no extra software to be downloaded or installed. The compact unit fits easily into a pocket, briefcase or laptop bag for connecting on the go. If additional power is required, the

Highlights

- Transmits audio/video signals from sources supporting USB DisplayPort Alt Mode
- Supports Ultra HD 4K resolutions up to 3840 x 2160 @ 30 Hz for crystal-clear video
- USB-C and USB-A ports allow connection of flash drives and other peripherals
- Joins a wired 10/100/1000 Gigabit Ethernet network when no Wi-Fi is available
- Plug-and-play operation with no software required for easy, immediate installation

Applications

- Play 4K video from your laptop or PC on an HDMI display, such as an HDTV or projector
- Access a wired Ethernet network in a location with no or spotty Wi-Fi
- Transfer data to and from a USB flash drive or external hard drive
- Connect a microphone/headset to record a podcast or listen to music

System Requirements

- Source device with USB-C or Thunderbolt 3 port that supports USB DisplayPort Alternate Mode
- Display device with DVI* or HDMI input
- Not for use with Thunderbolt monitors

*Requires adapter (sold separately)

Package Includes

- U442-DOCK13-S USB-C Dock, Silver
- Owner's manual

5V DC power jack is compatible with power supplies (not included) equipped with a 3.5 x 1.35 x 9.5 millimeter output plug, a positive tip and a negative sleeve.

Specifications

OVERVIEW	
UPC Code	037332213396
Product Type	Docking Station
Technology	Cat5/5e; Cat6; HDMI; USB 3.x
Host Connector	USB C (MALE)
VIDEO	
Number of Monitors Supported	1
Video Ports	HDMI (FEMALE)
Video Ports Details	HDMI 2.0; HDCP 2.2
Resolutions Supported	HDMI: 4K 30Hz (3840 x 2160)
Max Supported Video Resolution	HDMI: 3840 X 2160 (4K X 2K) @ 30HZ
Extended Mode	Yes
Mirror Mode	Yes
Max Supported Color Depth	24-bit True Color
HDR Support	No
Chroma Sub Sampling	4:4:4
DATA	
Data Ports	(1) USB C (FEMALE); (1) USB A (FEMALE)
Data Ports Details	(1) USB-C - USB 3.2 Gen 1 (5 Gbps); (1) USB-A - USB 3.2 Gen 1 (5 Gbps)
NETWORK	
Network Ports	RJ45 (FEMALE)
INPUT	
AC Power Adapter Output Specs (V / A)	5V / 2A
Voltage Compatibility (VAC)	100; 110; 120; 125; 127; 200; 208; 220; 230; 240
Built-In Cable Length (ft.)	0.49
Built-In Cable Length (m)	0.15
Built-In Cable Length (in.)	5.9
Built-In Cable Length (cm)	15

Bus Powered	Yes
Product Length (in.)	12
Product Length (cm.)	30.48
Product Length (ft.)	1
Product Length (m)	0.3
BATTERY	
Battery Charging (5V/1.5A Port)	No
POWER	
Power Source Type	USB
DC Barrel Plug	OD: 3.5 x 1.35 x 9.5mm, Positive Pin, Negative Sleeve
Power Consumption (Watts)	2.5
USB Power Delivery (PD) Charging Support	No
CONNECTIONS	
Number of Ports	4
Dock Connectors	USB-C, USB-A 3.0, RJ45, HDMI
Side A - Connector 1	USB C (MALE)
Side B - Connector 1	HDMI (FEMALE)
Side B - Connector 2	USB C (FEMALE)
Side B - Connector 3	USB 3.0 A (FEMALE)
Side B - Connector 4	RJ45 (FEMALE)
Connector Plating	Nickel
USER INTERFACE, ALERTS & CONTROLS	
LED Indicators	White (Connection to Power), Green (Link), Yellow (Activity)
CHARGING	
Total Charging Watts	0
PHYSICAL	
Color	Gray
Material of Construction	Aluminium
Cable Jacket Rating	VW-1
Shipping Dimensions (hwd / in.)	0.80 x 5.90 x 3.10
Shipping Dimensions (hwd / cm)	2.03 x 14.99 x 7.87
Shipping Weight (lbs.)	0.22



Powering Business Worldwide



Shipping Weight (kg)	0.10
Unit Dimensions (hwd / in.)	0.630 x 3.900 x 1.500
Unit Packaging Type	Box
Unit Weight (lbs.)	0.15
Unit Weight (kg)	0.07
ENVIRONMENTAL	
Operating Temperature Range	32° to 131°F (0° to 55°C)
Storage Temperature Range	14° to 158°F (-10° to 70°C)
Relative Humidity	5% to 95% RH, Non-Condensing
BTUs	8.5 BTU/Hr
Operating Humidity Range	10 to 85% RH, Non-condensing
Storage Humidity Range	5 to 90% RH, Non-condensing
Power Provided to Connected Device(s)	USB-A: 5V/0.9A (4.5W), USB-C: 5V/1.5A (7.5W)
COMMUNICATIONS	
Network Compatibility	1 Gbps (Gigabit)
IEEE Standards Supported	802.3
FEATURES & SPECIFICATIONS	
USB Hub Ports	Yes
Number of USB Hub Ports	2
USB Specification	USB 3.0 (up to 5 Gbps); USB 3.1 Gen 1 (up to 5 Gbps); USB 3.2 Gen 1 (up to 5 Gbps)
Ethernet Support	Yes
UASP Support	No
Auto MDIX Support	Yes
Full Duplex Support	Yes
Suspend Mode Support	Yes
Remote Wakeup Support	Yes
HDCP Specification	2.2
Driver Required	No
Recommended Category Cable	Cat5/5e/6 Cables
STANDARDS & COMPLIANCE	
TAA Compliant Option	N
Product Compliance	RoHS; CE (Europe); REACH; FCC (USA)



Powering Business Worldwide



WARRANTY & SUPPORT	
Product Warranty Period (Worldwide)	3-year limited warranty

1000 Eaton Boulevard
Cleveland, OH 44122
United States
<https://tripplite.eaton.com>

© 2024 Eaton. All Rights Reserved.
Eaton is a registered trademark. All other trademarks
are the property of their respective owners.