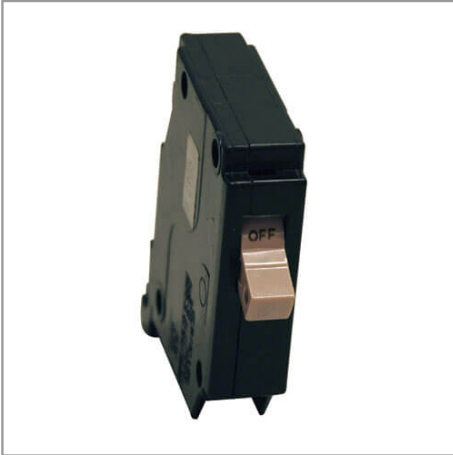


120V 20A Single Phase Circuit Breaker for Rack Distribution Cabinet Applications

MODEL NUMBER: **SUBB120**



Highlights

- Circuit breaker for SUDC208VP distribution cabinet applications
- Single Phase Cutler Hammer 120V 20A Single Pole

Description

Cutler Hammer single-phase 120V 20A single-pole circuit breaker for use with SUDC208VP rack distribution cabinet.

Features

- Cutler Hammer single phase 120V 20A single pole circuit breaker
- For use with SUDC208VP rack distribution cabinet

Specifications

OVERVIEW	
UPC Code	037332156396
Accessory Type	Circuit Breaker
Accessory Class	PDU Accessories
INPUT	
Rated input current (Maximum Load)	20A
Nominal Input Voltage(s) Supported	120V AC
PHYSICAL	
Shipping Dimensions (hwd / in.)	9.00 x 7.00 x 0.75
Shipping Dimensions (hwd / cm)	22.86 x 17.78 x 1.90
Shipping Weight (lbs.)	0.30
Shipping Weight (kg)	0.14



Powering Business Worldwide



Unit Dimensions (hwd / in.)	3.250 x 3.250 x 0.750
Unit Dimensions (hwd / cm)	8.3 x 8.3 x 1.9
Unit Weight (lbs.)	.225
Unit Weight (kg)	0.10
STANDARDS & COMPLIANCE	
Product Compliance	RoHS
WARRANTY & SUPPORT	
Product Warranty Period (Worldwide)	1-year limited warranty

1000 Eaton Boulevard
Cleveland, OH 44122
United States
<https://tripplite.eaton.com>

© 2025 Eaton. All Rights Reserved.
Eaton is a registered trademark. All other trademarks
are the property of their respective owners.