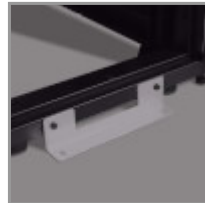


## 42U Deep Server Rack, Euro-Series - 1200 mm Depth, Doors & Side Panels Included

MODEL NUMBER: SRX42UBDP



42U rack cabinet houses, organizes and secures deeper standard-width rack equipment in high-density server and IT networking areas.

### Features

**Extra-Deep Server Cabinet Accommodates 42U of Standard Rack Equipment** This SmartRack® 42U rack enclosure is designed for network wiring closets, retail locations, classrooms, back offices and other areas with essential rack-mount IT equipment. It is 1200 millimeters deep and supports mounting of equipment up to 1050 millimeters deep. This allows high-density equipment installations, extra space for cable management, and room for removing hot-swap power supplies from the rear of mounted devices. Constructed from heavy-duty steel with a durable black powder-coated finish, the SRX42UBDP has a maximum stationary load capacity of 1360 kilograms and a maximum rolling load capacity of 1020 kilograms.

**Keeps Important Equipment Secure** The reversible front door, split rear doors and half-size side panels lock securely to help prevent damage, tampering or theft. The doors, side panels and top panel are designed for quick release, making it easy to access connected equipment and cabling with little effort. Convenient top access ports and an open bottom allow easy cable routing through the cabinet. The vented doors allow generous airflow from front to rear to keep your equipment cool and functioning at their peak.

**Easy Enclosure and Equipment Installation** This 42U server rack comes fully assembled for quick and easy deployment with pre-installed casters that let you maneuver it over a level, smooth, stable surface and through a standard two-meter doorway into position, where it can be stabilized by adjusting the levelers. Four mounting rails adjust in 6.35-millimeter increments to accommodate equipment up to 1050 millimeters deep. Toolless OU mounting rails allow quick installation of up to four compatible PDUs and vertical cable managers.

**Designed for Baying Multiple Enclosures in a Row** Built-in baying brackets allow the combination of two or more rack cabinets in a row. Center-to-center width can be set at 600 millimeters to match standard data-center floor tiles.

**Meets Payment Card Industry Standards** The SRX42UBDP provides physical equipment and media security required for PCI DSS (Payment Card Industry Data Security Standard) compliance. This is essential for companies that process, store and/or transmit credit card information.

### Highlights

- 42U rack constructed from powder-coated steel that stands up to tough environments
- Doors and side panels lock securely to help prevent damage, tampering or theft
- Ships fully assembled for quick deployment on pre-installed casters
- Provides physical equipment and media security required for PCI DSS compliance
- Mounting rails accept standard rack equipment up to 1050 mm deep

### Applications

- Store and organize deeper-than-usual rack-mount equipment in a network closet, data center or other area where you need components to be secure

### Package Includes

- SRX42UBDP 42U Server Rack
- (4) Side panels
- (4) Side panel locks
- (2) Keys
- (50) M6 screws
- (50) M6 washers
- (50) M6 cage nuts
- Owner's manual

## Specifications

### OVERVIEW



**Tripp Lite**  
1111 W. 35th Street  
Chicago, IL 60609 USA  
Telephone: 773.869.1234  
www.tripplite.com

UPC Code	037332224347
Device Compatibility	Patch Panel; Network Switch; UPS; Server
Rack Type	Enclosure
<b>PHYSICAL</b>	
Color	Black
Factory Preset Rack Depth (in.)	28.125
Factory Preset Rack Depth (cm)	71.4
Factory Preset Rack Depth (mm)	714
Maximum Device Depth (cm)	104.90
Maximum Device Depth (in.)	41.3
Maximum Device Depth (mm)	1,049
Minimum Device Depth (cm)	10.16
Minimum Device Depth (in.)	4
Minimum Device Depth (mm)	102
Rack Height	42U
Shipping Dimensions (hwd / in.)	85.00 x 26.00 x 52.76
Shipping Weight (kg)	165.56
Unit Dimensions (hwd / cm)	199.39 x 60.02 x 124.61
Unit Dimensions (hwd / in.)	78.5 x 23.63 x 49.060
Unit Weight (kg)	146.60
Unit Weight (lbs.)	323.200
Weight Capacity - Rolling (kg)	1,021
Weight Capacity - Rolling (lbs.)	2250
Weight Capacity - Stationary (kg)	1,361
Weight Capacity - Stationary (lbs.)	3000
Rack Depth	Deep
Number of Vertical Mounting Rails	4
<b>SPECIAL FEATURES</b>	
Grounding Lug	Front and Back door frames
<b>STANDARDS &amp; COMPLIANCE</b>	
Certifications	UL60950; RoHS; CE; IP20 Protection Rating
Approvals	EIA/ECA-310-E
<b>WARRANTY</b>	



**Tripp Lite**  
1111 W. 35th Street  
Chicago, IL 60609 USA  
Telephone: 773.869.1234  
[www.tripplite.com](http://www.tripplite.com)

Product Warranty Period (Worldwide)	5-year limited warranty
--	-------------------------

© 2021 Tripp Lite. All rights reserved. All product and company names are trademarks or registered trademarks of their respective holders. Use of them does not imply any affiliation with or endorsement by them. Tripp Lite has a policy of continuous improvement. Specifications are subject to change without notice. Tripp Lite uses primary and third-party agencies to test its products for compliance with standards. See a list of Tripp Lite's testing agencies:  
<https://www.tripplite.com/products/product-certification-agencies>