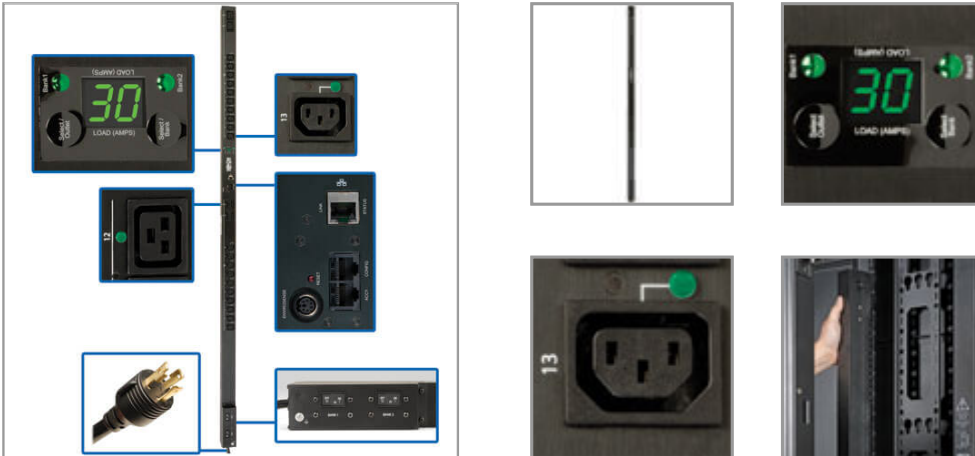


## TAA Compliant Single-Phase Switched PDU with outlet level metering, 5/5.8kW 30A 208/240V, 0U Vertical Rackmount, C19 & C13 outlets, L6-30P input

MODEL NUMBER: PDUMVR30HVNETAA



### Description

Tripp Lite single phase Switched PDU / Power Distribution Unit with individual outlet metering offers advanced network control and monitoring with the ability to turn on, turn off, recycle or lock-out power to each individual receptacle, monitor site electrical conditions and remotely monitor output power consumption for each individual outlet. Built-in current monitoring offers 1% billing grade accuracy. PowerAlert interface supports remote control and custom notification of user-specified conditions via email, secure web, SNMP, Telnet or SSH interface. Individually switched outlets can be controlled in real-time to remotely reboot unresponsive network hardware, or be custom programmed for user-defined power-up and power-down sequences to ensure proper startup of interdependent IT systems and prevent inrush-related overloads as network equipment is first energized. Unused PDU outlets can be electronically locked off to prevent the connection of unauthorized hardware. PDU output current consumption in amps is continuously displayed locally via visual meter and remotely via web/network interface to warn of potential overloads before critical IT mains or branch breakers trip.

### Features

- Federal Trade Agreements Act / TAA Compliant for GSA Schedule purchases
- 208/240V 30A Switched PDU with built-in web/network interface in 0U 70in / 178cm vertical rackmount form factor; 30A max capacity (agency derated to 24A)
- Attached NEMA L6-30P 208/240V single phase input with 10 ft. / 3m cord
- 24 switched outlets (4 C19 / 20 C13)
- Supports power-on, power-off or reboot of each outlet on a real-time or programmable basis
- Enables reboot of locked equipment, custom power-on/power-off sequences, load-shedding and disabling unused outlets
- Network interface provides PDU control and data regarding input voltage and load level for each load bank or each individual outlet in amps
- Current monitoring provides 1% billing grade accuracy

### Highlights

- Federal Trade Agreements Act / TAA Compliant for GSA Schedule purchases
- Switched 30A 208/240V PDU, 0U 70 in. / 178cm Vertical Rackmount Format
- Reports voltage, frequency and load per-outlet or load bank via ethernet interface
- Visual current meter, Toolless button mount installation
- NEMA L6-30P input, attached 10 ft. / 3m cord
- 24 switched outlets (4 C19 / 20 C13) with cord retention brackets
- Temperature, humidity and contact closure monitoring options

### Package Includes

- TAA Compliant version of Tripp Lite PDUMVR30HVNET
- Rackmount brackets
- PDUMVROTATEBRKT

- Digital display continuously report output load level in amps
- Display also supports IP-address self-identification and 180 degree display rotation
- Supports user-specified alarm notification thresholds
- In-rack environmental reporting with optional ENVIROSENSE temperature / humidity sensor and rack access notification with up to 4 optional SRSWITCH door sensors
- DHCP/Manual configuration support
- 10/100 Mbps auto-sensing
- Real-time clock backup maintains the time of day and date even if the PDU is unpowered
- Tiered access privileges allow an administrator and a guest to login via web browser
- Alert notifications via email or SNMP traps offer immediate event notification
- Firmware upgrade ability supports future product enhancements
- Supports HTTP, HTTPS, PowerAlert Network Management System, SMTP, SNMPv1, SNMPv2, Telnet, SSH, FTP, DHCP, BOOTP, NTP protocols
- Fully compatible with FREE PowerAlert Network Management System / NMS Software
- Included cord retention brackets
- Toolless mounting supported in button-mount compatible racks, plus nut-and-bolt mounting brackets for other mounting applications

## Specifications

OVERVIEW	
UPC Code	037332273833
PDU Type	Switched
INPUT	
Input Phase	Single-Phase
Maximum Input Amps	30
Maximum Input Amps Details	Agency de-rated to 24A continuous
PDU Plug Type	NEMA L6-30P
Input Cord Length (ft.)	10
Input Cord Length (m)	3.05
OUTPUT	
Output Capacity Details	5kW (208V input), 5.8kW (240V input), 4.8kW (200V input); 30A maximum (agency de-rated to 24A continuous)
Frequency Compatibility	50 / 60 Hz
Output Nominal Voltage	200-240V nominal, single phase
Customized Load Management Receptacles	Each outlet is individually controllable via remote interface
USER INTERFACE, ALERTS & CONTROLS	
Front Panel LCD Display	LCD display reports load level for load bank 1 (upper 12 outlets), bank 2 (lower 12 outlets), bank 1 & 2 combined (all 24 outlets) or each individual outlet to the nearest amp



Powering Business Worldwide



Front Panel LEDs	24 power availability LEDs confirm power off/on status for each built-in outlet
Switches	Separate load bank and outlet selection buttons
<b>SURGE / NOISE SUPPRESSION</b>	
Automatic Shut-Off	No
<b>PHYSICAL</b>	
Form Factors Supported	0U vertical rackmount; includes rackmount brackets. Supports toolless mounting in button-mount compatible racks
PDU Form Factor	Vertical (0U)
Unit Dimensions (hwd / in.)	70.000 x 2.200 x 2.600
Unit Dimensions (hwd / cm)	178 x 5.6 x 6.6
Unit Weight (lbs.)	12
Unit Weight (kg)	5.44
<b>ENVIRONMENTAL</b>	
Relative Humidity	0-95% non-condensing
Operating Elevation	0-10,000
<b>COMMUNICATIONS</b>	
PowerAlert Software	SNMPWEBCARD Interface: PowerAlert 12
Communications Cable	RJ45-to-DB9 configuration/console Access cable
SNMP Compatibility	Built-in network interface provides remote monitoring via web, Telnet, and SNMP management systems. Remote management enables outlets to be turned on and off individually
Network Compatibility	10 Mbps; 100 Mbps (Fast Ethernet)
<b>WARRANTY &amp; SUPPORT</b>	
Product Warranty Period (Worldwide)	2-year limited warranty

1000 Eaton Boulevard  
 Cleveland, OH 44122  
 United States  
<https://tripplite.eaton.com>

© 2025 Eaton. All Rights Reserved.  
 Eaton is a registered trademark. All other trademarks  
 are the property of their respective owners.