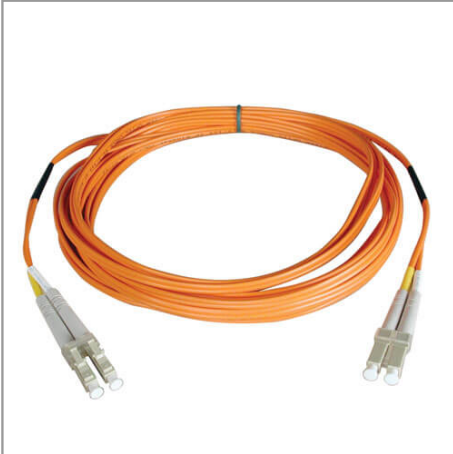


## Duplex Multimode 50/125 Fiber Patch Cable (LC/LC), 12M (40 ft.)

MODEL NUMBER: **N520-12M**



### Description

Tripp Lite's 12-meter multimode duplex Fibre Channel optic LC/LC patch cable is manufactured from 50/125 zipcord fiber. The cable has LC connectors on each end. It has a PVC jacket and is FDDI and OFNR rated. 50/125 Duplex multimode fiber is most commonly used in Fibre Channel applications. It is backward compatible with 62.5 micron fiber and provides built-in headroom for future applications. The cable provides higher bandwidth optimized for Gigabit and 10Gbps networks as well. Also available in 1, 2, 3, 5, 15, 20, 25, 30, and 50 meter lengths. Enter "N520-" in the search field to bring up all lengths. For LC-SC cables, search "N516-", and for SC-SC, search "N506-".

### Features

- Constructed with 50/125 micron cable
- Length - 12M ( 40ft )
- Use on fiber and fibre channel installations
- LC male to LC male connectors
- Higher bandwidth optimized for gigabit and 10Gbps networks
- Backward compatible with 62.5 micron fiber
- Built-in headroom for future applications
- Number of fibers: 2
- Fiber type: all glass graded index
- Core diameter: Two 50+/-3 microns
- CLAD diameter: 125+/-2 microns
- Primary coating diameter: 245+/-15 microns
- Primary coating material: acrylate
- Secondary coating diameter: 900+/-50 microns
- Secondary coating material: PVC
- Attenuation @850NM: 3.5DB/KM maximum, @1300NM: 1.0DB/KM maximum

### Highlights

- Premium PVC multimode patch cables
- Attenuation loss meets or exceeds the latest industry standards
- Higher bandwidth, optimized for gigabit and 10Gbps networks
- Backward compatible with 62.5 micron fiber
- Built-in headroom for future applications

### System Requirements

- Any fiber optic hardware or NIC card requiring multimode duplex cable with LC/LC connectors

### Package Includes

- 12M Duplex MMF Cable LC/LC 50/125 Fiber Patch Cable



- Bandwidth @850NM: 220 MHz-KM minimum, @1300NM: 600 MHz-KM minimum
- Numeric aperture: .275 nominal
- Proof test level: 100,000 PSI
- Insertion loss testing performed on every connector (0.2db typical) and provided with cable
- Beveled edge on ends of glass makes insertion of plug a breeze

## Specifications

OVERVIEW	
UPC Code	037332156327
Technology	Multimode
Optical Mode	OM2
PHYSICAL	
Cable Jacket Color	Orange
Cable Jacket Material	LSZH
Cable Jacket Rating	OFNR
Clad Diameter (microns)	125
Core Diameter (microns)	50
Number of Fibers	2
Cable Length (ft.)	39.4
Cable Length (m)	12.01
Cable Length (in.)	472.4
Minimum Bend Radius	20MM (Dynamic); 10MM (Static)
Shipping Dimensions (hwd / cm)	22.86 x 17.78 x 1.27
Shipping Dimensions (hwd / in.)	9.00 x 7.00 x 0.50
Shipping Weight (kg)	0.08
Shipping Weight (lbs.)	0.18
ENVIRONMENTAL	
Operating Temperature Range	-4 to 140 °F (-20 to 60 °C)
Storage Temperature Range	-4 to 140 °F (-20 to 60 °C)
Operating Humidity Range	5% to 85% RH, Non-Condensing
Storage Humidity Range	35% to 65% RH, Non-Condensing
COMMUNICATIONS	
Network Compatibility	1 Gbps (Gigabit); 10 Gbps



Attenuation @ 850NM	3.0dB/Km
Insertion Loss	0.20dB
<b>CONNECTIONS</b>	
Side A - Connector 1	LC DUPLEX (MALE)
Side B - Connector 1	LC DUPLEX (MALE)
Endface Polish	PC
Connector Color	Gray
<b>FEATURES &amp; SPECIFICATIONS</b>	
Push/Pull Tabs	No
Breakout	No
Trunk	No
<b>STANDARDS &amp; COMPLIANCE</b>	
Certifications	RoHS, REACH
Approvals	FDDI and OFNR rated
<b>WARRANTY</b>	
Product Warranty Period (Worldwide)	Lifetime limited warranty

© 2021 Tripp Lite. All rights reserved. All product and company names are trademarks or registered trademarks of their respective holders. Use of them does not imply any affiliation with or endorsement by them. Tripp Lite has a policy of continuous improvement. Specifications are subject to change without notice. Tripp Lite uses primary and third-party agencies to test its products for compliance with standards. See a list of Tripp Lite's testing agencies: <https://www.tripplite.com/products/product-certification-agencies>