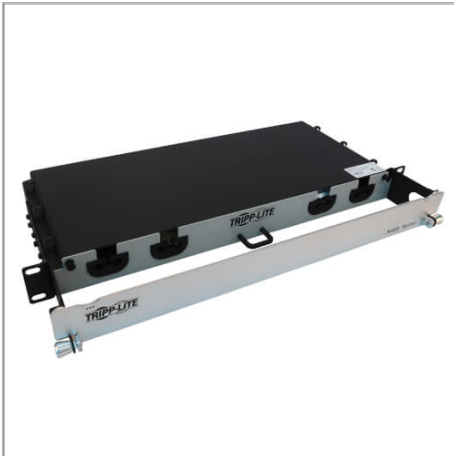


Preloaded Fiber Panel, 1U - 4x (12F MTP/MPO-APC to 4x LC Duplex F/M) 8F Trunk Cables, OS2 Singlemode, 10 m (32.8 ft.)

MODEL NUMBER: N48S-4M8L4-10



1U panel comes preloaded with spools of singlemode fiber cable that allow you to extend the exact length required and store the excess out of sight.

Description

Preloaded Fiber Panel, 1U - 4x (12F MTP/MPO-APC to 4x LC Duplex F/M) 8F Trunk Cables, OS2 Singlemode, 10 m (32.8 ft.)

Features

1U Panel Solution Comes with Cabling Preloaded to Cut Costs and Save Time

All necessary cabling is included with this preloaded fiber panel, coiled inside and ready for immediate use. The aluminum 1U chassis features four 8-fiber MTP/MPO-APC to LC Duplex singlemode trunk cables, all 10 meters (32.8 feet) in length to make management easy. The panel opens to provide easy access to stored cables. Use only as much cabling as you need. The remainder stores inside the chassis to eliminate cable clutter, allow better airflow through the rack and make equipment maintenance and replacement easier. The cables and panels have labels to help with organization. You also avoid the expense and effort of custom cabling. The flexibility in cable length lets you reuse the cables if equipment is moved. The N48S-4M8L4-10 mounts in just 1U of space in an EIA-standard 19-inch rack.

Specifications

OVERVIEW	
UPC Code	037332262721
Product Type	Preloaded
Technology	Singlemode
Optical Mode	OS2; SM
Panel Dimensions	17.32" X 1.73" X 10.20"
Panel Cable Number	4

Highlights

- 4 MTP/MPO-to-LC 8-fiber OS2 singlemode cables come coiled inside for instant use
- Use only as much cable as you need; store the remainder inside to avoid clutter
- Flexible cable length allows reuse of cables if equipment is moved
- Aluminum chassis mounts into 1U of space in EIA-standard 19 in. racks

Applications

- Save the expense and effort of buying custom cables or repurchasing cables after moving rack equipment
- Eliminate cable clutter by using only as much as you need and storing excess cable inside the panel

Package Includes

- N48S-4M8L4-10 Preloaded Fiber Panel
- (4) MTP/MPO-APC to LC Duplex trunk cables, 10 m (32.8 ft.)
- Installation guide

Panel Cable Length (m)	10
Mode Type	Singlemode
Firmware / Software Docs	
Offset Ports	No
PHYSICAL	
Primary Form Factor	Rackmount
Rack Height	1U
Cable Jacket Color	Yellow
Connector Color	Black; Blue; Green; White
Cable Jacket Material	PVC
Cable Jacket Rating	OFNP
Cable Outer Diameter (OD)	2.9 mm
Clad Diameter (microns)	125
Core Diameter (microns)	9
Primary Coating Diameter (microns)	245
Number of Fibers	24
Cable Length (ft.)	32.8
Cable Length (m)	10.00
Cable Length (in.)	393.7
Minimum Bend Radius	20 mm (Dynamic); 10 mm (Static)
Shipping Dimensions (hwd / in.)	4.30 x 22.80 x 18.90
Shipping Weight (kg)	3.40
Fiber Cable Length	10M (32.8 ft)
ENVIRONMENTAL	
Operating Temperature Range	-4° to 140°F (-20° to 60°C)
Storage Temperature Range	-4° to 140°F (-20° to 60°C)
Operating Humidity Range	5% to 85% RH, Non-Condensing
Storage Humidity Range	5% to 85% RH, Non-Condensing
COMMUNICATIONS	
Network Compatibility	40 Gbps; 100 Gbps; 400 Gbps
Wavelength	1310nm; 1550nm
Attenuation @ 1310NM	0.36 dB / km
Attenuation @ 1550NM	0.22 dB / km

Insertion Loss	MTP/MPO: 0.70 dB; LC: 0.30 dB
CONNECTIONS	
Side A - Connector 1	MTP/MPO (FEMALE)
Side B - Connector 1	(4) LC DUPLEX (MALE)
Endface Polish	APC; UPC
FEATURES & SPECIFICATIONS	
All-in-One Kit	Yes
Push/Pull Tabs	Yes
Built-in Cables	Yes
Optical Port	LC; MPO/MTP
STANDARDS & COMPLIANCE	
Product Compliance	RoHS; REACH
WARRANTY & SUPPORT	
Product Warranty Period (Worldwide)	Lifetime limited warranty