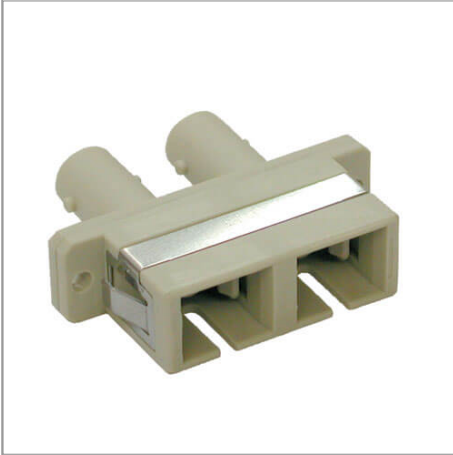


# Duplex Multimode Fiber Coupler (SC/ST)

MODEL NUMBER: N456-000



### Highlights

- Dual SC/ST coupler for mating disparate cables
- High precision mating structure with low insertion loss
- Duplex adapter accepts two simplex connectors or one duplex connector

### System Requirements

- Two cables with SC and ST fiber optic connectors

### Package Includes

- Duplex SC to ST fiber optic coupler

### Description

This coupler provides a simple and easy way to link together two fiber optic cables with SC and ST connectors. Can be used with duplex or simplex cable assemblies.

### Features

- Dual SC and ST female connectors
- For 62.5/125 or 50/125 multimode fiber

## Specifications

OVERVIEW	
UPC Code	037332120298
Technology	Multimode
CONNECTIONS	
Side A - Connector 1	SC DUPLEX (FEMALE)
Side B - Connector 1	ST DUPLEX (FEMALE)
PHYSICAL	
Color	Light Gray
Number of Fibers	2
Shipping Dimensions (hwd / in.)	0.10 x 7.00 x 9.50
Shipping Dimensions (hwd / cm)	0.25 x 17.78 x 24.13
Shipping Weight (lbs.)	0.04
Shipping Weight (kg)	0.02



Powering Business Worldwide



Unit Dimensions (hwd / in.)	0.000 x 0.000 x 0.000
<b>ENVIRONMENTAL</b>	
Operating Temperature Range	-4° to 158°F (-20° to 70°C)
Storage Temperature Range	-13° to 176°F (-25° to 80°C)
<b>FEATURES &amp; SPECIFICATIONS</b>	
Push/Pull Tabs	No
<b>STANDARDS &amp; COMPLIANCE</b>	
Product Compliance	RoHS
<b>WARRANTY &amp; SUPPORT</b>	
Product Warranty Period (Worldwide)	Lifetime limited warranty

1000 Eaton Boulevard  
Cleveland, OH 44122  
United States  
<https://tripplite.eaton.com>

© 2025 Eaton. All Rights Reserved.  
Eaton is a registered trademark. All other trademarks  
are the property of their respective owners.