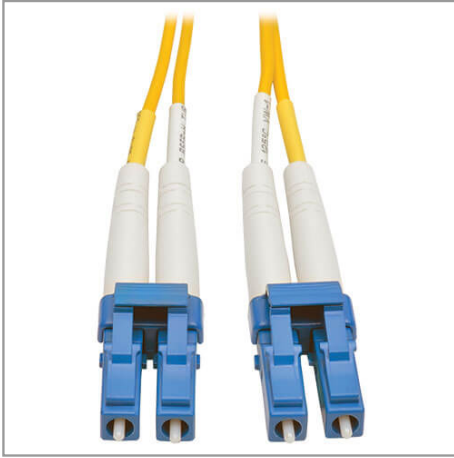


## Duplex Singlemode 9/125 Fiber Patch Cable (LC/LC), 30 m (100 ft.)

MODEL NUMBER: **N370-30M**



Premium singlemode fiber optic cabling transmits fast, clear data signals through your LAN with data transfer speeds up to 10 Gbps.

### Description

The N370-30M Duplex Singlemode 9/125 Fiber Patch Cable transmits fast, clear data signals through your LAN with data transfer speeds up to 10 Gbps. Designed for network equipment that requires singlemode fiber optic patch cables, this 30-meter (100-foot) cable has attenuation loss that meets or exceeds current standards.

The FDDI-rated N370-30M has 9/125 duplex (zipcord) fiber made from glass, instead of polymer. The sturdy LC male connectors meet stringent insertion loss standards and feature beveled edges on their glass ends for easy insertion into a patch panel or switch. The OFNR-rated PVC jacket is yellow to easily identify it as a singlemode cable.

### Features

#### Fast, Clear Data Transmission Through Your LAN

- Data transfer speeds up to 10 Gbps
- Ideal for network equipment that requires singlemode fiber optic patch cables
- Attenuation loss meets or exceeds latest industry standards

#### Superior Construction for Error-Free Signal Transfer

- 9/125 duplex (zipcord) fiber made from glass
- Sturdy LC male connectors meet stringent insertion loss standards
- Beveled edge on glass ends for easy plug insertion
- Yellow-colored for identification as singlemode

## Specifications

OVERVIEW	
UPC Code	037332157010
Technology	Singlemode

### Highlights

- Attenuation loss meets or exceeds latest industry standards
- 9/125 duplex (zipcord) fiber made from glass
- LC male connectors meet insertion loss standards
- FDDI- and OFNR-rated
- Beveled edge on glass ends for easy plug insertion

### System Requirements

- Fiber optic hardware or NIC card requiring singlemode duplex cable with LC/LC connectors

### Package Includes

- N370-30M Duplex Singlemode 9/125 Fiber Patch Cable, 30 m



Powering Business Worldwide

TRIPP LITE  
SERIES

Optical Mode	OS2
<b>CONNECTIONS</b>	
Side A - Connector 1	LC DUPLEX (MALE)
Side B - Connector 1	LC DUPLEX (MALE)
Endface Polish	UPC
<b>PHYSICAL</b>	
Cable Jacket Color	Yellow
Connector Color	Blue; White
Cable Jacket Material	LSZH
Cable Jacket Rating	OFNR
Clad Diameter (microns)	125
Core Diameter (microns)	9
Number of Fibers	2
Cable Length (ft.)	98.4
Cable Length (m)	30.00
Cable Length (in.)	1181.1
Minimum Bend Radius	20 mm (Dynamic); 10 mm (Static)
Shipping Dimensions (hwd / in.)	9.00 x 7.00 x 0.50
Shipping Dimensions (hwd / cm)	22.86 x 17.78 x 1.27
Shipping Weight (lbs.)	0.52
Shipping Weight (kg)	0.24
Fiber Cable Length	30M (98.4 ft)
<b>ENVIRONMENTAL</b>	
Operating Temperature Range	-4° to 140°F (-20° to 60°C)
Storage Temperature Range	-4° to 140°F (-20° to 60°C)
Operating Humidity Range	5% to 85% RH, Non-Condensing
Storage Humidity Range	35% to 65% RH, Non-Condensing
<b>COMMUNICATIONS</b>	
Network Compatibility	1 Gbps (Gigabit); 10 Gbps; 25 Gbps; 40 Gbps; 100 Gbps; 400 Gbps
Attenuation @ 1310NM	0.36 dB/km
Attenuation @ 1550NM	0.22 dB/km
Insertion Loss	0.30 dB
<b>FEATURES &amp; SPECIFICATIONS</b>	



Powering Business Worldwide

TRIPP LITE  
SERIES

Push/Pull Tabs	No
Breakout	No
Trunk	No
STANDARDS & COMPLIANCE	
Product Compliance	RoHS; REACH
WARRANTY & SUPPORT	
Product Warranty Period (Worldwide)	Lifetime limited warranty

1000 Eaton Boulevard  
Cleveland, OH 44122  
United States  
<https://tripplite.eaton.com>

© 2025 Eaton. All Rights Reserved.  
Eaton is a registered trademark. All other trademarks  
are the property of their respective owners.