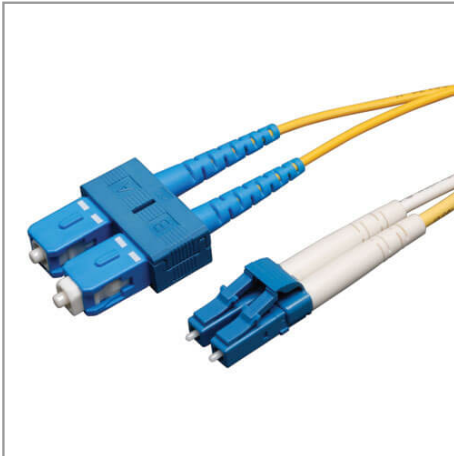


## Duplex Singlemode 9/125 Fiber Patch Cable (LC/SC), 1M (3 ft.)

MODEL NUMBER: N366-01M



### Features

- Manufactured from 9/125 duplex (zipcord) fiber
- PVC jacket
- Length: 1-meter. Connectors: 2 SC and 2 LC connectors on each end
- Insertion loss testing performed on every connector (0.2db typical) and provided with cable
- Beveled edge on ends of glass makes insertion of plug a breeze
- Fiber made from glass (not a polymer)
- Fiber optic distributed data interface (FDDI) rated
- OFNR (riser rated)

## Specifications

| OVERVIEW              |                   |
|-----------------------|-------------------|
| UPC Code              | 037332100535      |
| Technology            | Singlemode        |
| Optical Mode          | OS2               |
| PHYSICAL              |                   |
| Cable Jacket Color    | Yellow            |
| Connector Color       | Blue; Blue; White |
| Cable Jacket Material | LSZH              |
| Cable Jacket Rating   | OFNR              |

### Highlights

- Premium PVC 9/125 micron singlemode patch cables
- Attenuation loss meets or exceeds the latest industry standards
- Twice the bandwidth throughput of multimode cable

### System Requirements

- Any fiber optic hardware or NIC card requiring singlemode duplex cable with LC/SCconnectors

### Package Includes

- 1-meter Duplex Single mode Fiber Patch Cable, LC/SC

|                                      |   |
|--------------------------------------|---|
| Clad Diameter (microns)              | 125   |
| Core Diameter (microns)              | 9   |
| Number of Fibers                     | 2   |
| Cable Length (ft.)                   | 3.3   |
| Cable Length (m)                     | 1.01  |
| Cable Length (in.)                   | 39.4  |
| Minimum Bend Radius                  | 20MM (Dynamic); 10MM (Static)                                   |
| Shipping Dimensions (hwd / in.)      | 0.25 x 6.00 x 7.00  |
| Shipping Dimensions (hwd / cm)       | 0.64 x 15.24 x 17.78  |
| Shipping Weight (lbs.)               | 0.05  |
| Shipping Weight (kg)                 | 0.02  |
| <b>ENVIRONMENTAL</b>                 |   |
| Operating Temperature Range          | -4 to 140 °F (-20 to 60 °C)                                     |
| Storage Temperature Range            | -4 to 140 °F (-20 to 60 °C)                                     |
| Operating Humidity Range             | 5% to 85% RH, Non-Condensing                                    |
| Storage Humidity Range               | 35% to 65% RH, Non-Condensing                                   |
| <b>COMMUNICATIONS</b>                |   |
| Network Compatibility                | 1 Gbps (Gigabit); 10 Gbps; 25 Gbps; 40 Gbps; 100 Gbps; 400 Gbps |
| Attenuation @ 1310NM                 | 0.36dB/Km   |
| Attenuation @ 1550NM                 | 0.22dB/Km   |
| Insertion Loss                       | 0.30dB  |
| <b>CONNECTIONS</b>                   |   |
| Side A - Connector 1                 | LC DUPLEX (MALE)  |
| Side B - Connector 1                 | SC DUPLEX (MALE)  |
| Endface Polish                       | UPC   |
| <b>FEATURES &amp; SPECIFICATIONS</b> |   |
| Push/Pull Tabs                       | No  |
| Breakout                             | No  |
| Trunk                                | No  |
| <b>STANDARDS &amp; COMPLIANCE</b>    |   |
| Product Compliance                   | RoHS; REACH   |

**WARRANTY & SUPPORT**

Product Warranty Period  
(Worldwide)

Lifetime limited warranty