

Quick Start Guide

Guía de Inicio Rápido / Guide de démarrage rapide /
Schnellstartanleitung / Guida d'avvio rapido

TRIPP LITE
SERIES

Industrial Keystone Jack

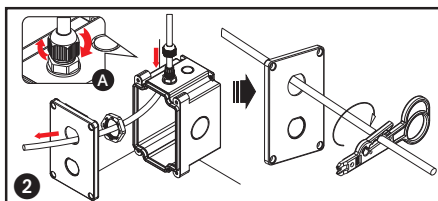
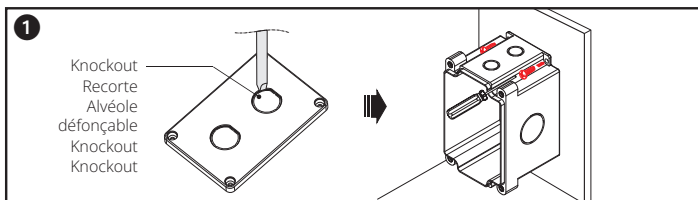
Enchufe industrial Keystone

Prise Keystone industrielle

Industrieller Keystone-Stecker

Jack Keystone industriale

N206-KJ01-IND

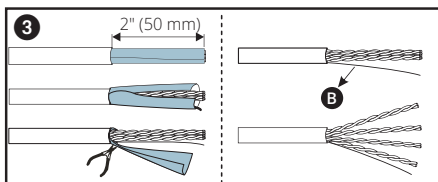


Note: Additional tools may be required to remove knockouts.

Nota: Es posible que se necesiten herramientas adicionales para retirar los accesos.

Remarque: Des outils supplémentaires peuvent être nécessaires pour retirer les alvéoles défonçables.

Hinweis: Zum Entfernen von Knockouts sind möglicherweise zusätzliche Werkzeuge erforderlich.



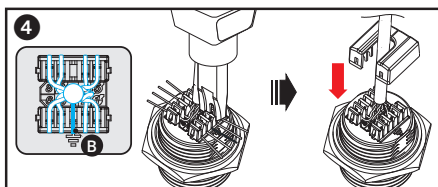
Nota: per rimuovere knockoutpotrebbe essere necessari altri strumenti.

A Note: Use the included 0.5" (M16) cable glands to complete this step.

Nota: Use los pasocables de 0.5" (M16) incluidos para completar este paso.

Remarque: Utilisez les presse-étoupes de 1,27 cm (0.5") (M16) fournis pour compléter cette étape.

Hinweis: Verwenden Sie die mitgelieferten 0,5"-Kabelverschraubungen (M16), um diesen Schritt durchzuführen.



Nota: per completare questo passaggio, utilizzi i pressacavi 0,5" (M16) inclusi.

B Drain Wire / Cable de Descarga / Fil de masse / Erdungsdraht / Cavo di scarico

EATON

Powering Business Worldwide

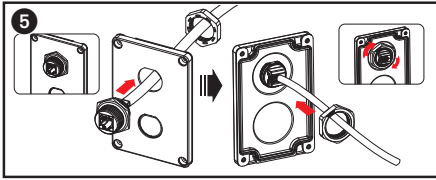
Note: The full owner's manual is available at the Eaton website.

Nota: El manual del propietario completo está disponible en la página web de Eaton.

Remarque: Le manuel d'utilisation complet est disponible sur le site web d'Eaton.

Hinweis: Das vollständige Benutzerhandbuch finden Sie auf der Eaton-Website.

Nota: il manuale d'uso completo è disponibile sul sito web di Eaton.



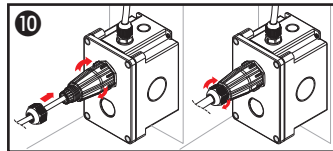
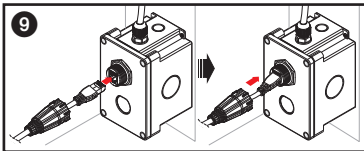
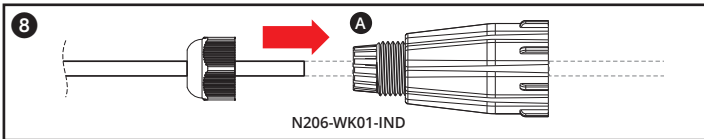
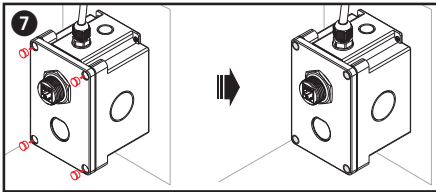
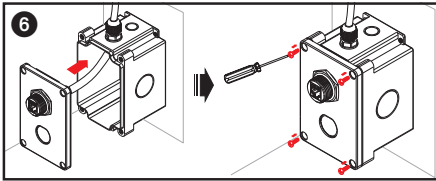
A For the front mating connection, you can use N206-PCXX-IND Series industrial cables (sold separately). You can also assemble your own cable connection using the N206-WK01-IND waterproof assembly kit (sold separately).

Para la conexión de acoplamiento frontal, puede utilizar cables industriales de la serie N206-PCXX-IND (vendidos por separado). También puede montar su propia conexión de cable utilizando el kit de montaje a prueba de agua N206-WK01-IND (vendido por separado).

Pour la connexion d'accouplement avant, vous pouvez utiliser les câbles industriels de la série N206-PCXX-IND (vendus séparément). Vous pouvez également assembler votre propre câble de connexion en utilisant le kit d'assemblage étanche N206-WK01-IND (vendu séparément).

Für den Anschluss an der Vorderseite können Sie Industriekabel der Baureihe N206-PCXX-IND verwenden (Separat erhältlich). Mit dem wasserdichten Montagesatz N206-WK01-IND (Separat erhältlich) können Sie auch Ihre eigene Kabelverbindung herstellen.

Per il collegamento di accoppiamento anteriore, può utilizzare i cavi industriali della Serie N206-PCXX-IND (venduto separatamente). Può anche assemblare il suo cavo di collegamento utilizzando il kit di montaggio impermeabile N206-WK01-IND (venduto separatamente).



EATON
Powering Business Worldwide

Eaton
1000 Eaton Boulevard
Cleveland, OH 44122
United States
Eaton.com

© 2024 Eaton
All Rights Reserved
Publication No. 24-08-026 /
93-4B88_RevA
November 2024

Eaton is a registered trademark.

All trademarks are property of their respective owners.