

Overview

# Brightlayer Data Centers suite



*Powering Business Worldwide*



# Brightlayer

## Data Centers suite

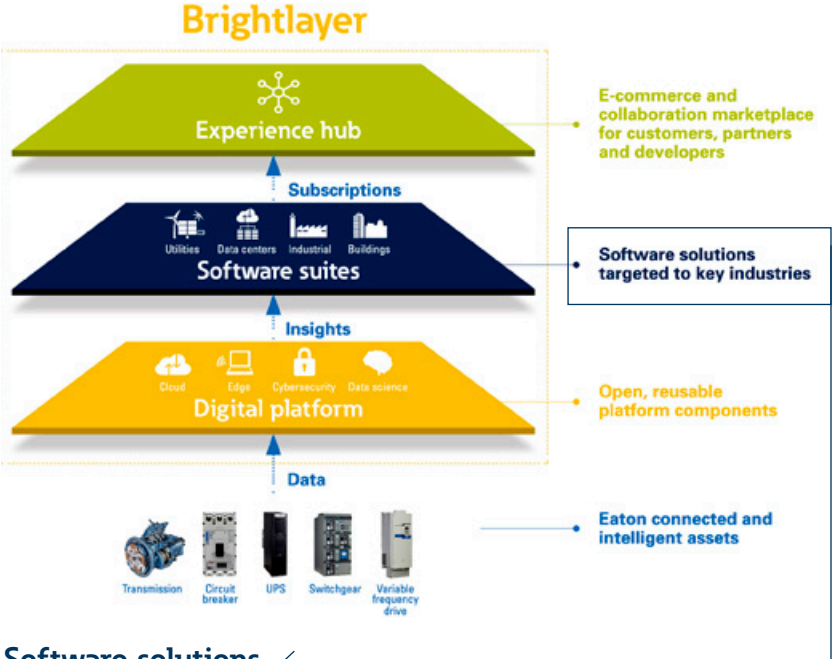
Driven by rises in high-performance and cloud computing, storage, and virtualization, power management continues to be a significant opportunity for data centers.

See what's coming today and plan for tomorrow. With Eaton's Brightlayer Data Centers suite, data center managers fix issues as they happen—or prevent them entirely. Eaton's software applications include everything from data center infrastructure management (DCIM) with capacity analytics and 3D visualizations to advanced, automatic remediations and cloud-based analytics that help predict power component failure.

The Brightlayer Data Centers suite allows you to reliably aggregate data center and IT asset information, monitor and manage your end-to-end IT and power infrastructure for business continuity, and optimize your data center performance.

# Brightlayer enables you to leverage data and insights to drive operational value and focus on what matters.

With Brightlayer, we've taken our more than 100 years of industry expertise and developed a foundation for leveraging data to provide insights that matter to you. No matter how you want to drive digital enablement, Brightlayer lets you access data, insights and digital solutions to best meet your business needs. It all starts with your assets and the data they can provide you. We're focused on helping you capitalize on the data and insights from those assets to drive operational value.



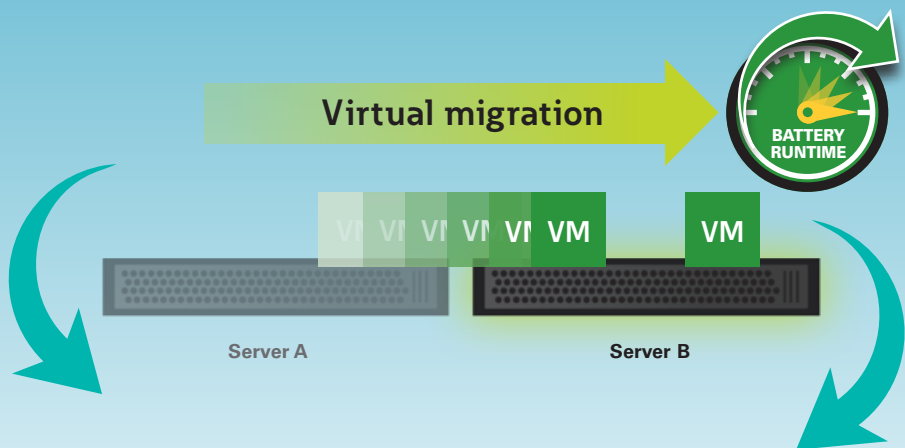
## Software solutions ←

**Brightlayer Utilities suite**  
Enable uptime and operational efficiency of complex power grids

**Brightlayer Industrial suite**  
Reduce downtime and improve energy – efficiency for critical industrial assets

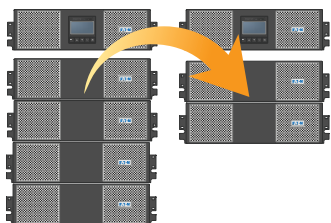
**Brightlayer Data Centers suite**  
Effectively manage a complex IT asset ecosystem for maximum uptime

**Brightlayer Buildings suite**  
Ensure efficiency and security of building operations and infrastructure



## Disaster avoidance application Intelligent Power Manager (IPM)

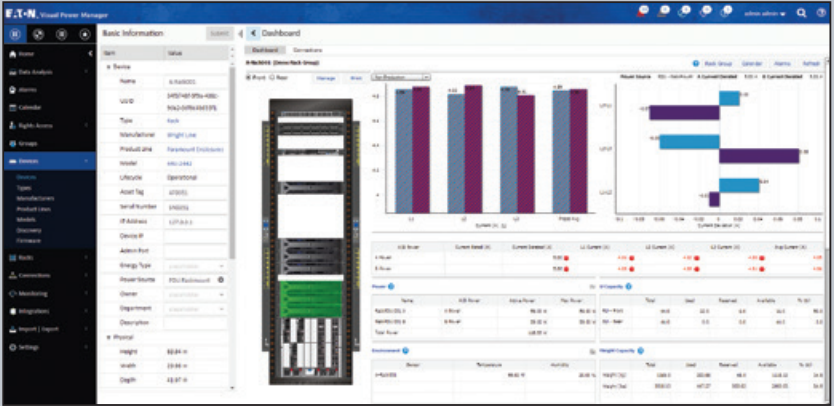
Eaton's Intelligent Power Manager (IPM) software provides the tools needed to monitor and manage power devices in your physical or virtual environment. This innovative software solution ensures system uptime and data integrity by allowing you to remotely monitor, manage and control UPSs and other devices on your network. IPM provides a disaster avoidance solution that is easy to use and maintains business continuity.



**Intelligent**   
**Power Manager**

Learn more at [Eaton.com/IPM](http://Eaton.com/IPM)

- **Downtime risk reduction**  
Employ automatic corrective actions.
- **IT industry leader integration**  
Think Nutanix Ready Acropolis Hypervision (AHV) and more.
- **Less initial upfront batteries**  
Increase your runtime via software, limiting the hardware to be deployed.
- **Intelligent load shedding**  
Increase system uptime while extending battery runtime and minimizing generator load by suspending non-critical virtual machines.
- **Site Recovery Manager failover**  
Reduce data recovery expenses by synching primary and disaster recovery sites prior to power failures.
- **Power capping on demand**  
Keep critical workloads running longer during a power outage by limiting server power consumption.
- **Remote agentless host management**  
Conserve valuable time when remotely shutting down servers by eliminating the need for agents that consume resources and slow performance.



# Edge and distributed infrastructure management application Visual Power Manager (VPM)

Eaton's Visual Power Manager (VPM) software provides IT managers of data centers, edge and distributed IT environments the tools to remotely monitor power devices — including all UPSs and PDUs. An HTML5-based platform, VPM is easy-to-deploy, simplifies day-to-day monitoring and helps maintain business continuity. VPM offers two levels of licenses: VPM Essential is a self-installable, subscription-based license that offers users essential power management capabilities in a simplified interface for a competitive price; VPM Professional offers the ability to visualize infrastructures with asset management and location-based analytics to take necessary actions for continuous uptime of critical applications.

- **Real-time alarms** to help with power infrastructure monitoring
- **Increased awareness** with reports, trends and dashboards
- **Remote access to monitor and control** your devices from anywhere
- **Customizable user access** for multitenancy and feature access limitation
- **Control of rack** PDU outlets and UPS load segments
- **Customer billing/chargeback** reports
- **View outlet and rack power capacity** as well as power events
- **View your phase balancing** at rack level
- **Predefined trend charts** for anomaly identification and analysis
- **Simplified budget planning** with integrated battery replacement reports



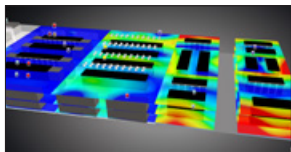
Learn more at [Eaton.com/VPM](https://Eaton.com/VPM)



## Data center infrastructure management application Visual Capacity Optimization Manager (VCOM)

VCOM, Eaton's data center infrastructure management (DCIM) platform, provides you with valuable information to make better business decisions. The HTML5-based platform features capabilities designed to reduce data center operational expenses, improve system and application reliability, and mitigate risk through data analysis.

You gain the unique ability to not only easily track usage, utilization, capacity limits and more, but also the advantage of reacting quicker to address any related concerns.

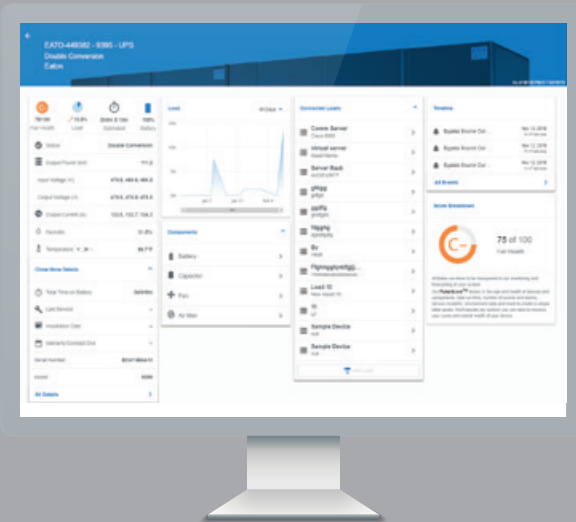


**Visual Capacity Optimization Manager**

Learn more at [Eaton.com/VCOM](https://www.eaton.com/VCOM)

- **Virtualization and monitoring**  
View 3D renderings and identify problems at all levels of the data center as well as across the enterprise.
- **Asset management**  
Centralize your device data repository and use limitless attribute tracking.
- **Capacity planning**  
Use "what-if" scenarios to understand current usage to ensure capacity is present for upcoming projects.
- **Environmental monitoring**  
Create real-time thermal imaging profiles of your environment using temperature, humidity, leak detection, door closure and air pressure data.
- **Change/workflow management**  
Reduce time to deploy and increase accuracy of implementation with fully integrated and native capability to generate projects, tasks and work orders.
- **Multitenancy**  
Support more than one customer/user type by presenting separate and distinct data that pertains solely to each tenant.

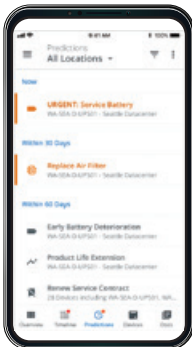




## Managed services and insights application PredictPulse

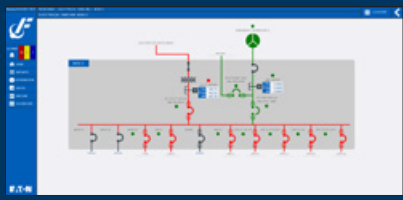
PredictPulse remote monitoring includes 24x7 remote monitoring of subscribed devices and critical alarm phone notification/dispatch, mobile and browser dashboard access to subscribed devices, trended and event data, monthly summary reporting, and integration with Eaton's field service technicians and technical analysts for remote diagnostics.

- **24x7 expert remote monitoring** of IT infrastructure power quality equipment.
- **Predict the risk of component failure** with cloud-based analytics plus a verification site to confirm and replace components through PredictPulse Insight.
- **Stay connected** with the PredictPulse app, which provides access to real-time status updates.
- **Cloud-based, outbound-only data for cybersecurity** that is easy to enroll and activate.
- **Leverage Eaton UPS service expertise** and expedite field technician response and repair.



**PredictPulse™**

Learn more at [Eaton.com/PredictPulse](https://Eaton.com/PredictPulse)



## Electrical power monitoring system application Foreseer®

Foreseer connects your operation's vast array of devices, giving them the ability to be monitored — regardless of manufacturer or model — to help you reduce energy consumption and avoid unplanned downtime due to the failure of critical systems.

- **Power quality analysis**

Powerful tools to analyze waveform captures and phasor diagrams.

- **Operational insights**

Comprehensive system monitoring, including emergency power availability, facility efficiency, environmental impact, facility cooling, outside weather conditions, and security, fire, and building management systems.

- **Custom user interfaces**

Dynamic one-line views, dashboards, 3D renderings, equipment elevations and virtually any custom view can be created.

- **WAGES support**

Monitor and analyze multiple building subsystems known as WAGES (water, air, gas, electricity, steam) to quickly make informed decisions.

- **Nationwide, local field service**

Experts where you need them for rapid response, custom programming and turnkey implementations.

- **Derived equations**

Write complex formulas, allowing for real-time custom metric calculations without the need to export and manipulate data.

- **Advanced reporting**

Transform complex data from a multitude of sources into concise, graphical reports and automatically deliver via email or network storage.

- **Scalable**

Purchase only what you need through tailored monitoring capabilities for different sites.

- **Alarm notifications**

Users stay informed 24/7 by receiving alarms via email, text message and dashboard notifications.

- **Maintenance manager**

Suppress nuisance notifications while still logging activity.



Learn more at [Eaton.com/foreseer](http://Eaton.com/foreseer)



For more information on Eaton software, visit  
[Eaton.com/BrightlayerDataCenters](https://Eaton.com/BrightlayerDataCenters)

**Eaton**  
1000 Eaton Boulevard  
Cleveland, OH 44122  
United States  
[Eaton.com](https://Eaton.com)

© 2021 Eaton  
All Rights Reserved  
Printed in USA  
BR152072EN / GG  
October 2021

Eaton is a registered trademark.

All other trademarks are property  
of their respective owners.

**EATON**  
*Powering Business Worldwide*