



# Eaton Tripp Lite series pure sine wave rack/tower cloud-connected line-interactive UPS

## Reliable power protection for sensitive electronics

With pure sine wave output power, this Tripp Lite series rack/tower cloud-connected line-interactive (AVR) UPS offers high-quality protection for the most sensitive electronics. Available in 750VA, 1000VA and 1500VA models, this versatile UPS can be used as a tower, placed horizontally on a desktop or mounted in a rack with use of a rack-mount kit (sold separately). It provides reliable battery backup for a variety of electronics, including test and measurement equipment, data recording equipment, high-end network equipment and servers.

### Cloud-based remote monitoring

**Remote monitoring and management:** Allows you to oversee and control UPS systems from anywhere, ensuring timely interventions and adjustments.

**Brightlayer-powered remote management:** Included cloud-based remote monitoring software allows easy monitoring, control and management of any size deployment from anywhere via mobile app or web browser.

**Integrated Ethernet port:** Built-in RJ45 Ethernet port connects the UPS to the Internet, enabling cloud connectivity out of the box for enhanced monitoring and management.

**Advanced data analytics:** Provides insights into power usage and performance trends to help optimize operations and reduce costs.

**Improved uptime:** Ensures continuous operation by minimizing downtime through proactive monitoring and quick issue resolution.

**Cost-effectiveness:** Features built-in cloud capabilities with remote monitoring software included at no additional cost.

### Applications

**Office and network environments:** Protect high-end workstations, switches, routers and other critical devices from power disturbances.

**Laboratories:** Protect sensitive electronic equipment like data recorders, oscilloscopes and high-end workstations with pure sine wave power.

**Network closets:** Ensure continuous operation of servers, storage systems and networking equipment.

### Power protection for IT equipment

**Pure sine wave power:** Provides maximum stability and compatibility with sensitive equipment.

**Network-grade power protection:** Protects sensitive electronics with advanced surge protection, voltage regulation and battery backup.

**Reliable battery backup:** Keeps equipment running during short outages, provides time to save work in progress and allows safe shutdown of equipment during longer outages.

### Convenient power management

**Switchable load banks:** Each load bank can be switched on/off or cycled remotely, reducing the need for on-site visits.

**Main outlets (1000VA and 1500VA models):** Dedicated, non-switchable outlets remain continuously on whenever the UPS is operational, ensuring a reliable power supply to critical devices.

### Simple and efficient operation

**Energy efficiency:** Optimizes power usage, reducing energy consumption and operational costs while maintaining performance.

**Scalability:** Easily adapts to growing business needs, allowing seamless integration of additional units as needed.

**Ease of use:** Simplifies management with user-friendly interfaces and automated features, making it accessible for all users.

**User-friendly design:** Supports vertical or horizontal placement on desktop or floor. The rotatable LCD interface provides quick access to critical information.

**Optional rack-mount kit:** The pure sine wave UPS mounts in 2U of rack space in 2- or 4-post racks with the RKTRYPSC rack-mount kit (sold separately).



*Powering Business Worldwide*

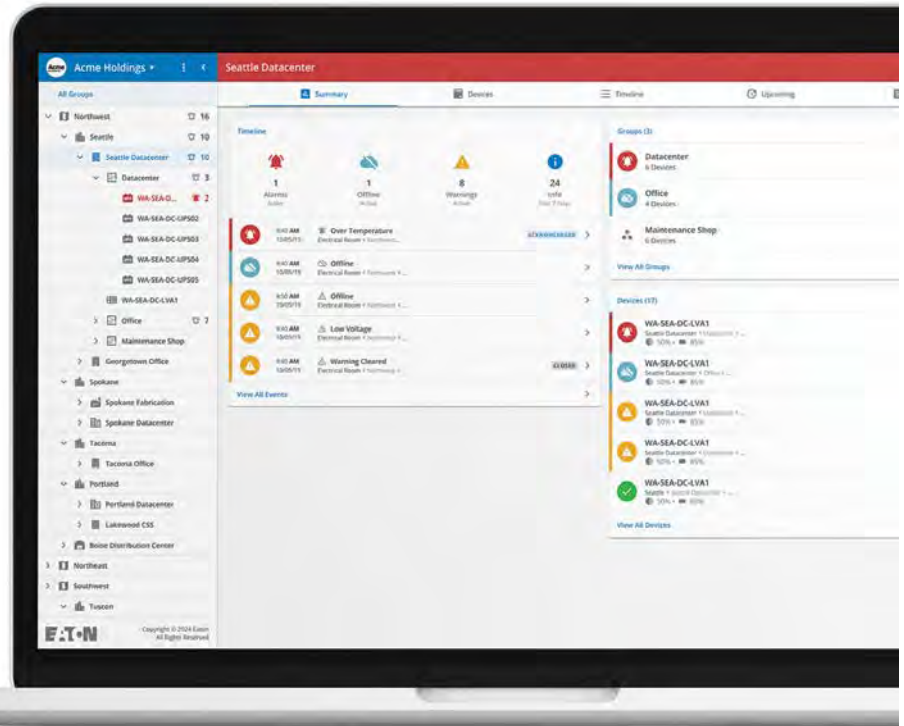
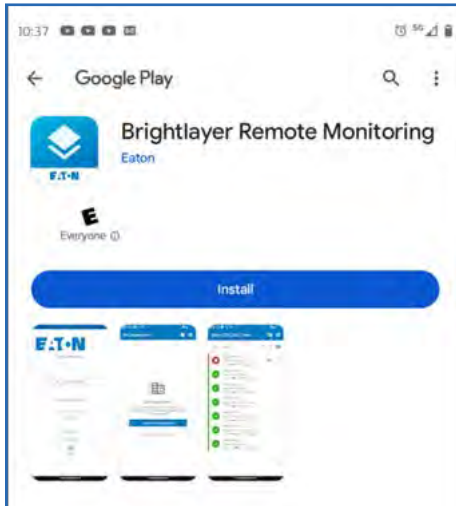
# Cloud-based remote monitoring from anywhere, anytime

The Tripp Lite series cloud-connected line-interactive UPS includes remote monitoring software with an intuitive dashboard that is accessible from a mobile app or web browser. Cloud connectivity enables efficient setup, deployment and management of multiple UPS systems across multiple locations.

Powered by  
**Brightlayer**

## Cloud-connected UPS enhanced with remote monitoring software

Eaton's cloud-based remote monitoring dashboard offers convenient setup, control and management of a single UPS or a larger deployment. Receive alerts, push configurations, silence alarms or control outlet banks using a mobile app (Android or iOS) or web browser.



## Software key features

- Accessible using a mobile app or web browser
- Two-factor authentication
- Multi-user account management
- UPS onboarding via QR code
- Remote monitoring of UPS power trends
- Remote outlet control (cloud-enabled)
- Near-field communication (NFC) for network configuration
- Fleet (tree) view and sorting
- Remote software firmware upgrades
- Alert notifications and responses via email and SMS
- Audible alarm control
- Event log up to 30 days
- Remote self-test
- Remote outlet groups to track where equipment is plugged in
- Available at no cost for 10 years



### Ethernet communication port

Use an Ethernet cable to connect the UPS to your network. This enables connection to cloud-based remote monitoring.



### Easy setup and commissioning

Scan the QR code on the UPS to download the remote monitoring app on a mobile device. Set up an account and scan the QR code with the app to seamlessly add the UPS to your account. For access on a desktop computer, use the provided web address.



### Near-field communication (NFC) capability

Add the UPS to your network using the mobile app and NFC. Tap the NFC area on the UPS with your mobile device to add the UPS to your network.



### Remote monitoring dashboard

Accessible via mobile device or web browser, the simple color-coded dashboard provides a quick visual indication of device status: alerts (red), warnings (yellow) or normal operation (blue). Alerts can be sent to a mobile device, providing early awareness of issues that can cause downtime.

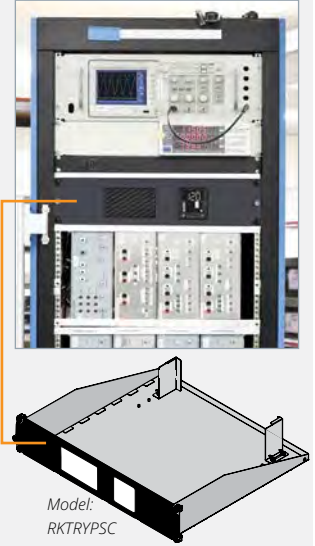


## Feature focus



### Optional rack-mount kit – RKTRYPSC (sold separately)

Includes shelf and faceplate for 2- or 4-post 19-inch IT racks.



Front view: SMART750PSRTNC, SMART1000PSRTNC, SMART1500PSRTNC

Rear view: SMART750PSRTNC

Rear view: SMART1000PSRTNC, SMART1500PSRTNC

#### 1 Multifunction LCD control panel

Rotatable front-panel LCD reports detailed voltage, runtime, load and battery information.

#### 2 On/Off button

#### 3 Status LEDs

Green LED indicates the battery is fully charged (solid green) or the battery is charging (flashing green). Red LED indicates a UPS fault.

#### 4 Mute/Select button

#### 5 Ethernet port (RJ45)

Port connects to a local network.

#### 6 USB-C port

Port connects the UPS to a computer running an SSH server to enable command line interface (CLI) commands.

#### 7 QR code label

Scanning the QR code facilitates downloading the remote monitoring app and adding the UPS to an account.

#### 8 Near-field communication (NFC) area

Add the UPS to your network using NFC and an app-enabled mobile device.

#### 9 Battery- and surge-protected NEMA 5-15R main outlets

Whenever the UPS is operational, these non-switchable outlets remain continuously on to provide battery backup and surge protection to connected equipment.

#### 10 Switchable load banks with battery- and surge-protected NEMA 5-15R outlets

These outlets provide battery backup and surge protection to connected equipment. Each switched load bank can be controlled remotely to reboot unresponsive equipment.

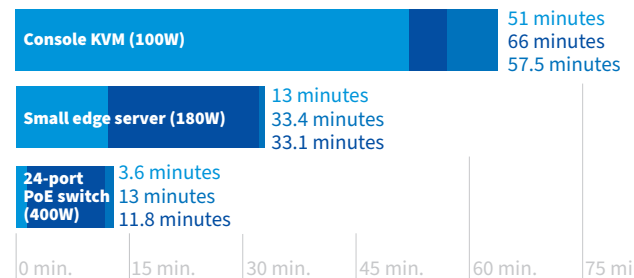
#### 11 Circuit breaker

#### 12 Input power cord with NEMA 5-15P plug

### Typical runtimes

Runtime varies with load, battery age and other factors.

■ SMART750PSRTNC  
■ SMART1000PSRTNC  
■ SMART1500PSRTNC



## Specifications

SMART750PSRTNC		SMART1000PSRTNC		SMART1500PSRTNC		
UPS type	Line-interactive		Line-interactive		Line-interactive	
Output						
Output capacity (VA/Watts)	750 VA/475 W		1000 VA/750W		1500 VA/1050 W	
Nominal output voltage	120V		120V		120V	
Frequency compatibility	50 or 60 Hz follows the AC input frequency. Battery cold start is 60 Hz only.					
Output AC waveform (AC line mode)	Sine wave		Sine wave		Sine wave	
Output AC waveform (battery mode)	Sine wave		Sine wave		Sine wave	
Output receptacles	(8) NEMA 5-15R (Surge + battery backup)		(10) NEMA 5-15R (Surge + battery backup)		(10) NEMA 5-15R (Surge + battery backup)	
Controllable load banks	3 load banks: 1 (2 outlets), 2 (2 outlets), 3 (4 outlets)		3 load banks: 1 (2 outlets), 2 (2 outlets), 3 (4 outlets)		3 load banks: 1 (2 outlets), 2 (2 outlets), 3 (4 outlets)	
Input						
Nominal input voltage	120V		120V		120V	
Input voltage range for mains operation (max adjustable range)	97-145 VAC		97-145 VAC		97-145 VAC	
Input frequency	50 Hz/60 Hz auto-sensing		50 Hz/60 Hz auto-sensing		50 Hz/60 Hz auto-sensing	
Input connection	NEMA 5-15P, 5 ft. cord		NEMA 5-15P, 5 ft. cord		NEMA 5-15P, 5 ft. cord	
Batteries and runtime						
Battery type	Sealed, maintenance-free, lead-acid		Sealed, maintenance-free, lead-acid		Sealed, maintenance-free, lead-acid	
Expandable runtime	No		No		No	
Backup runtime* - full/half load	2 min./8 min.		1.8 min./10 min.		2.5 min./8 min.	
DC system voltage (VDC)	12V		24V		24V	
Indicators and switches						
LCD screen	Yes (White text on black)		Yes (White text on black)		Yes (White text on black)	
LED functions (color)	Green: line mode; Red: fault		Green: line mode; Red: fault		Green: line mode; Red: fault	
Switch functions (type)	On/Off and Enter/Mute		On/Off and Enter/Mute		On/Off and Enter/Mute	
Alarms (function)	Low battery, fault		Low battery, fault		Low battery, fault	
Alarm default	Temporary mute		Temporary mute		Temporary mute	
Communication and management						
Cloud-based monitoring	Yes		Yes		Yes	
Interface ports	Ethernet port allows the UPS to be managed via a network connection. NFC commissioning allows easy transfer of network settings to the UPS. USB-C port enables configuration by command line interface (CLI).					
Audible alarm	Yes		Yes		Yes	
Protection characteristics						
UPS AC suppression rating	158 joules					
UPS AC suppression response time	Instantaneous					
Overload protection	Line mode: 110% (+15%,-5%), enters fault after 5 minutes; 120% (+15%,-5%), enters fault immediately. Battery mode: 110% (+15%,-5%), shuts down in 5 seconds; 120% (+15%,-5%), shuts down immediately.					
Physical						
Cabinet type	Tower (Rack-mount kit RKTRYPSC; sold separately)		Tower (Rack-mount kit RKTRYPSC; sold separately)		Tower (Rack-mount kit RKTRYPSC; sold separately)	
Cabinet material	Plastic		Plastic		Plastic	
Battery door	Yes		Yes		Yes	
Dimensions (H x W x D)	12.40 x 3.38 x 12.99 in. (315 x 85.9 x 330 mm)		12.40 x 3.38 x 15.35 in. (315 x 85.9 x 389.9 mm)		12.40 x 3.38 x 15.35 in. (315 x 85.9 x 389.9 mm)	
Net weight	15.4 lb. (7 kg)		26 lb. (11.8 kg)		28.7 lb. (13 kg)	
Environment						
Humidity	0% to 90% RH @ 0 to 40°C (Non-condensing)					
Storage temp./Operating temp.	5° to 122° F (-15° to 50° C)/32° to 104° F (0 to 40° C)					
Standards and compliance						
Regulatory	CAN/CSA-C22.2 No. 107.3 (Canada); ICES (Canada); NOM (Mexico); UL 1778					
Compliance	ENERGY STAR; RoHS; FCC Class B					
Warranty	3-year limited warranty					

Due to continuous improvement programs, specifications are subject to change without notice. These UPS systems have \$250,000 Ultimate Lifetime Insurance for connected equipment.

\* Runtime varies with load, battery age and other factors.

**Eaton**  
1000 Eaton Boulevard  
Cleveland, OH 44122  
United States  
Eaton.com

© 2025 Eaton  
All Rights Reserved  
Printed in USA  
BR153232EN / 24-05-279  
May 2025

**EAT•N**  
Powering Business Worldwide

Learn more about Tripp Lite series  
cloud-connected UPS systems at  
[TrippLite.Eaton.com](https://TrippLite.Eaton.com)



Follow us on social media to get the latest product and support information.



Eaton is a registered trademark.

All other trademarks are property of their respective owners.