



Eaton Tripp Lite series 2U rack-mount/tower cloud-connected line-interactive UPS

Reliable power protection for your critical equipment

The Tripp Lite series 2U rack-mount/tower cloud-connected line-interactive (AVR) UPS is engineered to deliver robust and reliable power protection for your essential equipment. Available in 750VA, 1000VA and 1500VA models, this versatile UPS can be conveniently mounted in a rack, used as a tower or mounted on a wall. It's ideal for a variety of environments, from data centers to network closets.

Cloud-based remote monitoring

Remote monitoring and management: Allows you to oversee and control UPS systems from anywhere, ensuring timely interventions and adjustments.

Brightlayer-powered remote management: Included cloud-based remote monitoring software allows easy monitoring, control and management of any size deployment from anywhere via mobile app or web browser.

Integrated Ethernet port: Built-in RJ45 Ethernet port connects the UPS to the Internet, enabling cloud connectivity out of the box for enhanced monitoring and management.

Advanced data analytics: Provides insights into power usage and performance trends to help optimize operations and reduce costs.

Improved uptime: Ensures continuous operation by minimizing downtime through proactive monitoring and quick issue resolution.

Cost-effectiveness: These UPS systems feature built-in cloud capabilities with remote monitoring software included at no additional cost.

Applications

Data centers: Ensure continuous operation of servers, storage systems and networking equipment.

Network closets: Protect switches, routers and other networking devices from power disturbances.

Office environments: Maintain productivity by safeguarding workstations, VoIP systems and other essential office equipment.

Power protection for IT equipment

Network-grade power protection: Protects sensitive electronics with advanced surge protection, voltage regulation and battery backup.

Reliable battery backup: Keeps equipment running during short outages, provides time to save work in progress and allows safe shutdown of equipment during longer outages.

Extended runtime: The 1500VA model has an external battery option for additional runtime, ensuring continuous protection for your critical systems.

Convenient and efficient operation

Controllable outlets: Remotely toggle outlet load banks (using the remote monitoring app) to reboot unresponsive equipment, reducing the need for on-site visits.

Energy efficiency: Optimizes power usage, reducing energy consumption and operational costs while maintaining performance.

Scalability: Easily adapts to growing business needs, allowing seamless integration of additional units as needed.

Ease of use: Simplifies management with user-friendly interfaces and automated features, making it accessible for all users.

User-friendly design: The 2U form factor and flexible mounting options make installation and integration straightforward. The LCD interface provides easy access to critical information.

Why choose this Tripp Lite series cloud-connected UPS?

With its combination of cloud connectivity, remote management and advanced protection features, this cloud-connected UPS is the ideal solution for maintaining the reliability and efficiency of your critical systems. Trust Eaton to deliver the power protection you need to keep your operations running smoothly.



Powering Business Worldwide

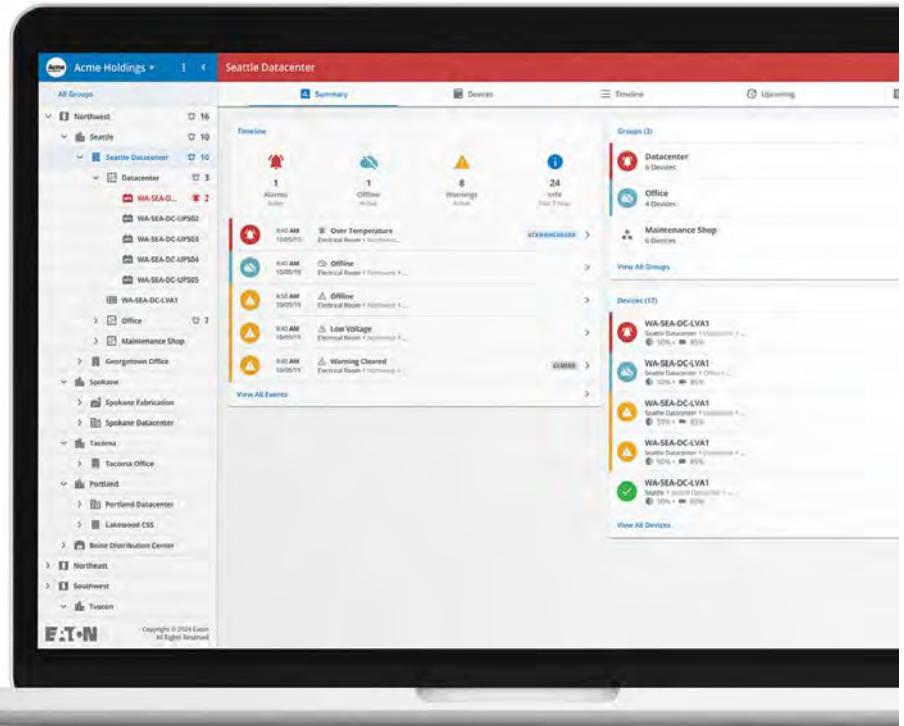
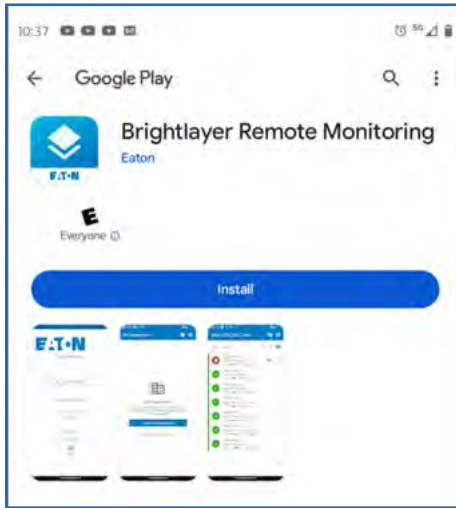
Cloud-based remote monitoring from anywhere, anytime

The Tripp Lite series cloud-connected line-interactive UPS includes remote monitoring software with an intuitive dashboard that is accessible from a mobile app or web browser. Cloud connectivity enables efficient setup, deployment and management of multiple UPS systems across multiple locations.

Powered by
Brightlayer

Cloud-connected UPS enhanced with remote monitoring software

Eaton's cloud-based remote monitoring dashboard offers convenient setup, control and management of a single UPS or a larger deployment. Receive alerts, push configurations, silence alarms or control outlet banks using a mobile app (Android or iOS) or web browser.



Software key features

- Accessible using a mobile app or web browser
- Two-factor authentication
- Multi-user account management
- UPS onboarding via QR code
- Remote monitoring of UPS power trends
- Remote outlet control (cloud-enabled)
- Near-field communication (NFC) for network configuration
- Fleet (tree) view and sorting
- Remote software firmware upgrades
- Alert notifications and responses via email and SMS
- Audible alarm control
- Event log up to 30 days
- Remote self-test
- Remote outlet groups to track where equipment is plugged in
- Available at no cost for 10 years



Ethernet communication port

Use an Ethernet cable to connect the UPS to your network. This enables connection to cloud-based remote monitoring.



Easy setup and commissioning

Scan the QR code on the UPS to download the remote monitoring app on a mobile device. Set up an account and scan the QR code with the app to seamlessly add the UPS to your account. For access on a desktop computer, use the provided web address.



Near-field communication (NFC) capability

Add the UPS to your network using the mobile app and NFC. Tap the NFC area on the UPS with your mobile device to add the UPS to your network.



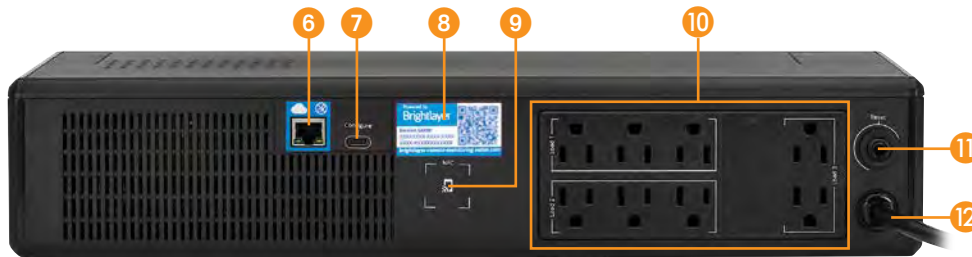
Remote monitoring dashboard

Accessible via mobile device or web browser, the simple color-coded dashboard provides a quick visual indication of device status: alerts (red), warnings (yellow) or normal operation (blue). Alerts can be sent to a mobile device, providing early awareness of issues that can cause downtime.

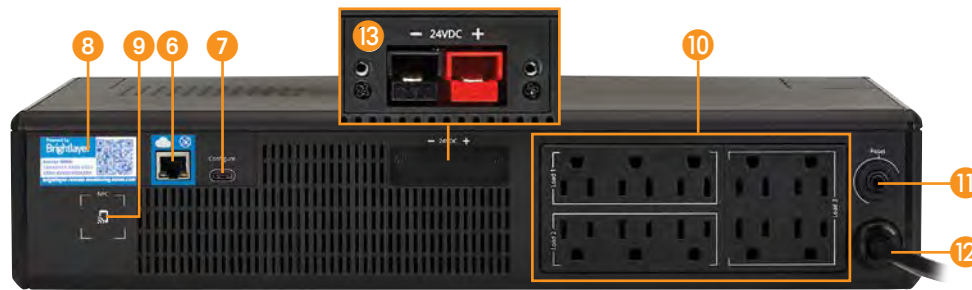
Feature focus



Front view: SMART750LCDNC, SMART1000LCDNC, SMART1500LCDXNC



Rear view: SMART750LCDNC



Rear view: SMART1000LCDNC, SMART1500LCDXNC (with battery connector)



1 Mounting hole covers

Remove the covers to reveal mounting holes that support the included mounting ears for installation in a two-post or four-post rack. The mounting ears also add stability to tower installations.

2 Multifunction LCD control panel

Front-panel LCD reports detailed voltage, runtime, load and battery information. LCD rotates to accommodate tower orientation.

3 Power button

4 Status LEDs

Green LED indicates the battery is fully charged (solid green) or the battery is charging (flashing green). Red LED indicates a UPS fault.

5 Mute/Select button

6 Ethernet port (RJ45)

Port connects to a local network.

7 USB-C port

Port connects the UPS to a computer running an SSH server to enable command line interface (CLI) commands.

8 QR code label

Scanning the QR code facilitates downloading the remote monitoring app and adding the UPS to an account.

9 Near-field communication (NFC) area

Add the UPS to your network using NFC and an app-enabled mobile device.

10 Battery- and surge-protected NEMA 5-15R outlets

These outlets provide battery backup and surge protection to connected equipment. Each switched load bank can be controlled remotely to reboot unresponsive equipment.

11 Circuit breaker

12 Input power cord with NEMA 5-15P plug

13 External battery connector (SMART1500LCDXNC only)

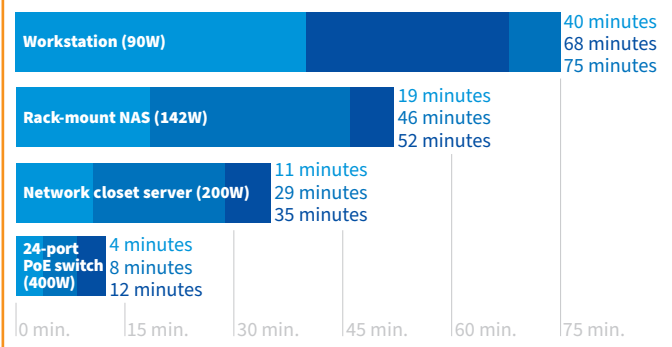
14 Keyhole mounting slots

Mounting slots facilitate installation of the UPS on a wall in its vertical orientation.

Typical runtimes

Runtime varies with load, battery age and other factors.

■ SMART750LCDNC
■ SMART1000LCDNC
■ SMART1500LCDXNC



Specifications

	SMART750LCDNC	SMART1000LCDNC	SMART1500CDXNC
UPS type	Line-interactive	Line-interactive	Line-interactive
Output			
Output capacity (VA/Watts)	750 VA/475 W	1000 VA/750 W	1440 VA/1050 W
Nominal output voltage	120V	120V	120V
Frequency compatibility	50 or 60 Hz follows the AC input frequency. Battery cold start is 60 Hz only.		
Output AC waveform (AC line mode)	Sine wave		
Output AC waveform (battery mode)	Modified sine wave		
Output receptacles	(8) NEMA 5-15R (surge + battery backup) Load Bank 1: 3 outlets; Load Bank 2: 3 outlets; Load Bank 3: 2 outlets	(10) NEMA 5-15R (surge + battery backup) Load Bank 1: 3 outlets; Load Bank 2: 3 outlets Load Bank 3: 4 outlets	(10) NEMA 5-15R (surge + battery backup) Load Bank 1: 3 outlets; Load Bank 2: 3 outlets Load Bank 3: 4 outlets
Input			
Nominal input voltage	120V	120V	120V
Input voltage range for mains operation (max adjustable range)	97–145 VAC High line set 145V +/-3.5%; High line reset 142V +/-3.5%; Low line set 97V +/-3.5%; Low line reset 100V +/-3.5%		
Input frequency	50 or 60 Hz +/- 5 Hz (default 60 Hz)		
Input connection	NEMA 5-15P, 5 ft. cord		
Batteries and runtime			
Battery type	Sealed, maintenance-free, lead-acid	Sealed, maintenance-free, lead-acid	Sealed, maintenance-free, lead-acid
Expandable runtime	—	—	Yes, BP24V15RT2U external battery, sold separately
Backup runtime* - full/half load	1 min./7 min.	2 min./7 min.	2 min./7 min. (7 min./30 min. with external battery)
DC system voltage (VDC)	12V	12V	24V
Hot-swappable	Yes	Yes	Yes
Indicators and switches			
LCD screen	Yes (White text on black, rotatable)	Yes (White text on black, rotatable)	Yes (White text on black, rotatable)
LED functions (color)	Green: line mode Red: fault	Green: line mode Red: fault	Green: line mode Red: fault
Switch functions (type)	2 buttons (Power, Mute/Select)	2 buttons (Power, Mute/Select)	2 buttons (Power, Mute/Select)
Alarms (function)	Power failure, low battery and overload	Power failure, low battery and overload	Power failure, low battery and overload
Mute/Silent option	Yes	Yes	Yes
Communication and management			
Cloud-based monitoring	Yes		
Interface ports	Ethernet port allows the UPS to be managed via a network connection. NFC commissioning allows easy transfer of network settings to the UPS. USB-C port enables configuration by command line interface (CLI).		
Audible alarm	Yes	Yes	Yes
Protection characteristics			
UPS AC suppression rating	380 joules		
UPS AC suppression response time	Instantaneous		
Overload protection	Line mode: 110%, enters fault after 5 minutes; 120%, shuts down and enters fault immediately. Battery mode: 110%, shuts down in 5 seconds; 120%, shuts down immediately.		
Physical			
Cabinet type	2U rack/tower	2U rack/tower	2U rack/tower
Cabinet material	Plastic	Plastic	Plastic
Battery door	Yes	Yes	Yes
Dimensions (H x W x D)	3.42 x 17.24 x 8.26 in. (87 x 438 x 210 mm)	3.42 x 17.24 x 11 in. (87 x 438 x 280 mm)	3.42 x 17.24 x 11 in. (87 x 438 x 280 mm)
Net weight	16.53 lb. (7.5 kg)	23.14 lb. (10.5 kg)	28.66 lb. (13 kg)
Environment			
Humidity	0-90% RH @ 32 to 104 °F (0 to 40 °C) (non-condensing)		
Storage temp./Operating temp.	5 to 122 °F (-15 to 50 °C) / 32 to 104 °F (0 to 40 °C)		
Standards and compliance			
Regulatory	CAN/CSA-C22.2 No. 107.3 (Canada); ICES (Canada); NOM (Mexico); UL 1778		
Compliance	ENERGY STAR; RoHS; FCC Class B; DOE		
Warranty	2-year limited warranty		

Due to continuous improvement programs, specifications are subject to change without notice. These UPS systems have \$250,000 Ultimate Lifetime Insurance for connected equipment.

* Runtime varies with load, battery age and other factors.

Eaton
1000 Eaton Boulevard
Cleveland, OH 44122
United States
Eaton.com

© 2025 Eaton
All Rights Reserved
Printed in USA
BR153212EN / 24-05-278
March 2025

Learn more about Tripp Lite series
cloud-connected UPS systems at
TrippLite.Eaton.com



Follow us on social media to get the latest product and support information.

