



Powering and Connecting Your World



# 4 Steps to Selecting Network Cabling Lengths and Mounting Components

Whether you are installing a new rack of network equipment or updating an existing data center with multiple racks, determining the length of cabling and the necessary mounting components is essential for reducing cost and ensuring your network stays connected and productive.

## STEP 1. RACKS & EQUIPMENT LOCATIONS

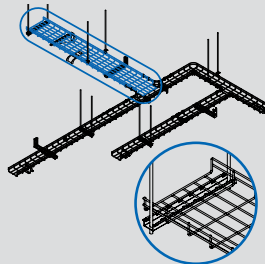
When planning a new or upgrading a current rack installation, decide on the placement of racks and network equipment that require power or data. This will give you a general idea of the length of cabling and mounting accessories you need to connect servers, routers, hubs and other network equipment.



[Browse available rack cabinets.](#)

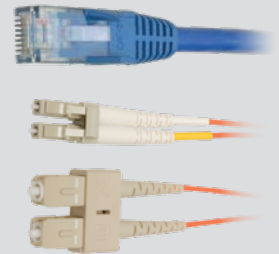
## STEP 3. NUMBER OF CABLES

Determine the number of cables each cable tray, ramp or trough can hold, based on the cable type and fill percentage.



## STEP 2. CABLE RUNS

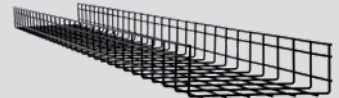
Measure the length of cabling needed along planned pathways with extra length on each end to reach network devices and to future-proof your network for even longer cable distance requirements.



Browse [Cat5/Cat6/Cat8 copper cables](#) and [singlemode/multimode fiber cables](#).

## STEP 4. CABLE PATHWAYS

Plan how your network cabling will be routed through the installation space. Consider cable troughs, trays, ramps, junctions and other cable routing accessories.



[See available cable management products](#)

Browse Tripp Lite's full line of [copper network cables](#), [fiber network cables](#) and [mounting components](#).



Powering and Connecting Your World

### Tripp Lite Corporate Headquarters

1111 West 35th Street, Chicago, IL 60609 USA

773.869.1773 | [triplite.com](http://triplite.com)



Manufacturing Excellence.

