

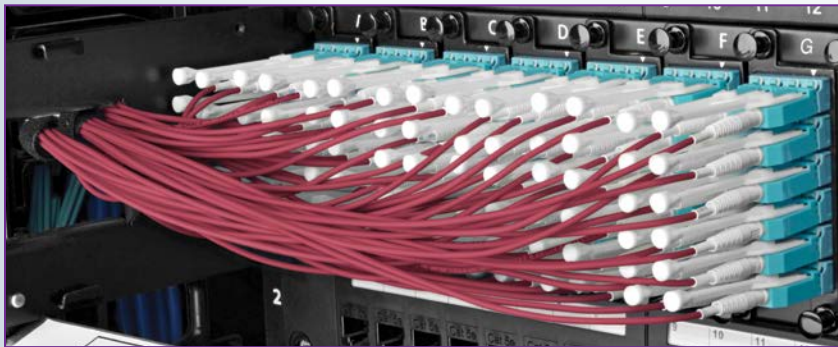


NEW PRODUCT ANNOUNCEMENT

Breakout Fiber Patch Panels Connect 10 Gb Devices to 40 Gb Switches Conveniently and Efficiently

As 40 Gb fiber becomes a standard option for network backbones, installers need a convenient solution for connecting 10 Gb devices to 40 Gb switches. Custom breakout cables filled a pressing need when no other options were available, but using unstructured cabling makes installs, upgrades, changes, troubleshooting and repairs extremely inefficient.

Since the typical 40 Gb switch has 10 Gb devices connected to about half its ports, Tripp Lite has created a solution that brings plug-and-play convenience to these connections. Breakout fiber patch panels combine the functionality of breakout cables, the efficiency of structured cabling and the convenience of a pre-assembled kit.



Breakout fiber patch panels split 40 Gb QSFP+ switch ports into 10 Gb duplex LC ports, which connect to devices' SFP+ ports with high-quality off-the-shelf fiber patch cables. Push/pull tabs make high-density cables easy to insert and remove without tools.



Sized for 40 Gb switches with up to 36 ports, 1U panels split 15 QSFP+ ports into 60 duplex LC ports.



Sized for larger 40 Gb switches, 2U panels split 42 QSFP+ ports into 168 duplex LC ports.

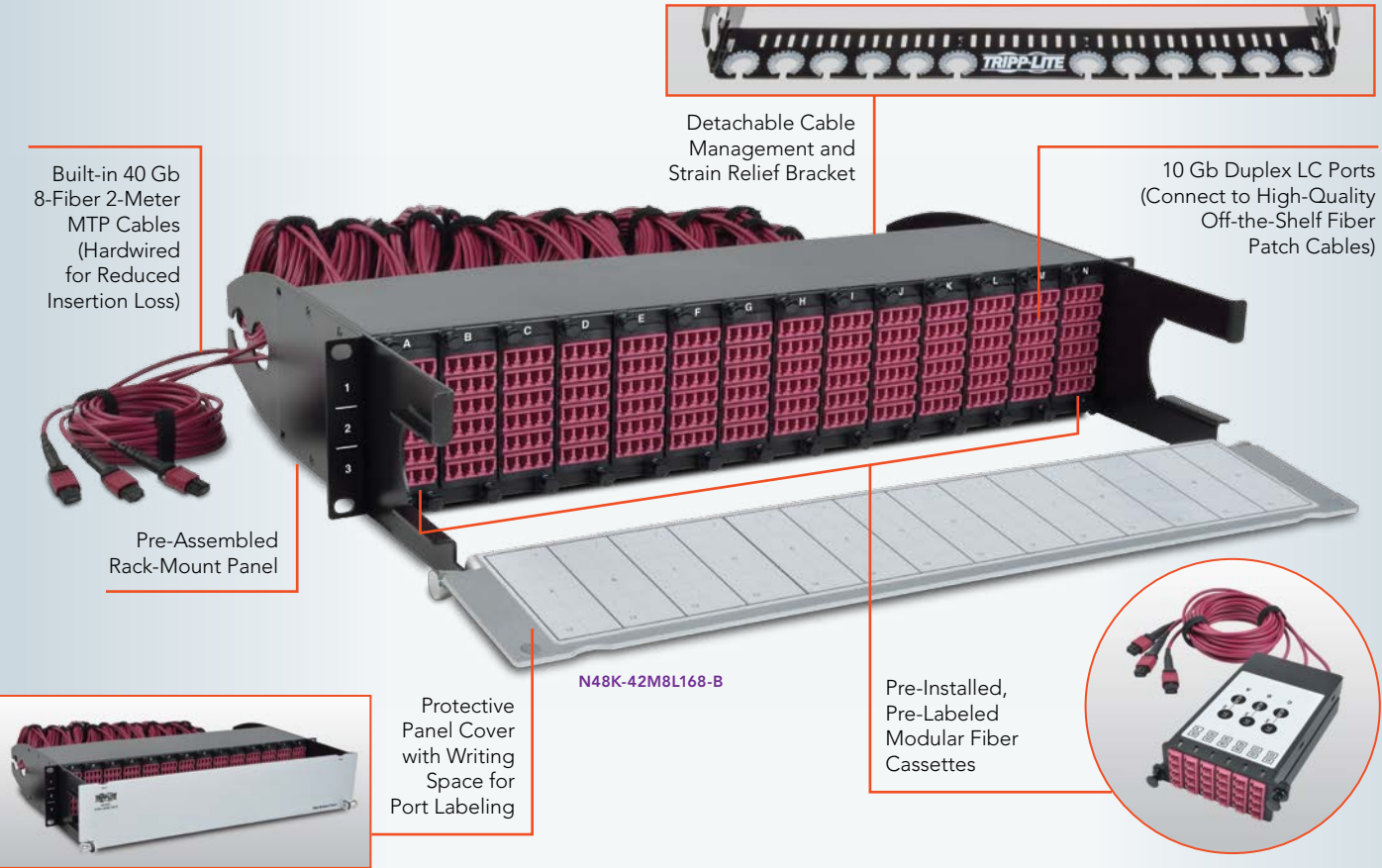
Key Benefits

- **Convenience:** Pre-assembled panels include modular fiber breakout cassettes with built-in MTP cables and duplex LC ports for quick deployment.
- **Efficiency:** Structured cabling makes installs, upgrades, changes, troubleshooting and repairs quicker, easier and more cost-effective than using custom breakout cables.
- **Manageability:** Pre-labeled cabling, pre-labeled cassettes and integrated cable management improve organization.
- **Port Density:** Compact rack-mount panels provide up to 168 high-density duplex LC ports for 10 Gb connections.
- **Flexibility:** Base-8 connectivity supports popular 40 Gb switches today and 100/400 Gb networks tomorrow. Versions are available for OM4 multimode and singlemode fiber.



Tripp Lite has been recognized in the CRN Data Center 100 as one of the top 20 infrastructure providers in the industry.

Features



Tripp Lite breakout fiber patch panels are recommended for 40 Gb switches that support Base-8 connectivity, including popular models from Arista®, Brocade®, Cisco®, Dell®, HP® and others.

BREAKOUT FIBER PATCH PANELS

Model	Description
N48K-15M8L60-B	1U 50/125 Multimode OM4 Breakout Fiber Patch Panel, 15 MTP to 60 Duplex LC, 40 Gb (QSFP+) to 10 Gb (SFP+)
N48K-42M8L168-B	2U 50/125 Multimode OM4 Breakout Fiber Patch Panel, 42 MTP to 168 Duplex LC, 40 Gb (QSFP+) to 10 Gb (SFP+)
N48K-15M8L60S-B	1U 8.3/125 Singlemode Breakout Fiber Patch Panel, 15 MTP to 60 Duplex LC, 40 Gb (QSFP+) to 10 Gb (SFP+)
N48K-42M8L168SB	2U 8.3/125 Singlemode Breakout Fiber Patch Panel, 42 MTP to 168 Duplex LC, 40 Gb (QSFP+) to 10 Gb (SFP+)

DUPLEX MULTIMODE 50/125 OM4 LSZH FIBER PATCH CABLES WITH PUSH/PULL TAB CONNECTORS (LC/LC)

N821-01M-MG-T	1 m (3 ft.)	N821-02M-MG-T	2 m (6 ft.)	N821-03M-MG-T	3 m (10 ft.)	N821-05M-MG-T	5 m (16 ft.)
----------------------	-------------	----------------------	-------------	----------------------	--------------	----------------------	--------------

DUPLEX SINGLEMODE 8.3/125 FIBER PATCH CABLES WITH PUSH/PULL TAB CONNECTORS (LC/LC)

N370-01M-T	1 m (3 ft.)	N370-02M-T	2 m (6 ft.)	N370-03M-T	3 m (10 ft.)	N370-05M-T	5 m (16 ft.)
-------------------	-------------	-------------------	-------------	-------------------	--------------	-------------------	--------------

ADDITIONAL CABLE LENGTHS AND TYPES AVAILABLE AT WWW.TRIPLITE.COM

Learn more about Tripp Lite's full line of cables and connectivity solutions at www.triplite.com.



© 2016 Tripp Lite. MTP is a registered trademark of US Conec, Ltd. All other trademarks are the property of their respective owners. Photos may differ slightly from actual products. Tripp Lite has a policy of continuous improvement. Specifications are subject to change without notice.