

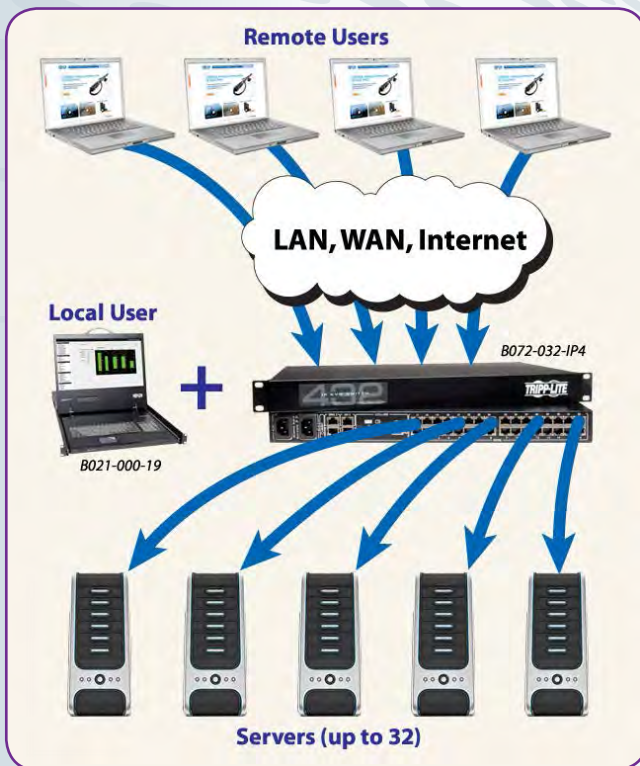


NEW! NetCommander® Multi-User Cat5 IP KVM Switches

All-in-One System Control at Your Fingertips



B072-032-IP4



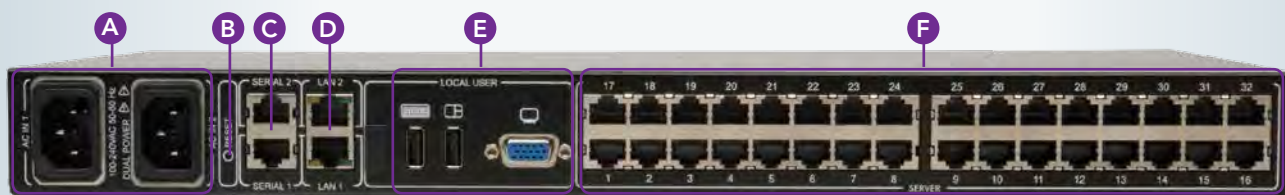
Access servers anywhere with built-in IP remote access capability.

Simple, Flexible System Control

Tripp Lite's NetCommander Multi-User Cat5 IP KVM Switches are the smart solution for controlling multiple servers and serial devices from one monitor, keyboard and mouse. Designed using the most advanced technology available, these 1U switches feature rugged construction, premium connectors and superior functionality at prices that won't break the bank. Intuitive Web Configuration Interface with multi-level authentication allows you to quickly and efficiently manage your installation, while dual LAN ports protect you from potentially crippling downtime. With up to 32 ports and support for up to 4 simultaneous remote sessions, these high-performance KVM switches provide you with the flexibility you need to manage your system.

Key Features

- Enable direct connection of up to 8, 16 or 32 computers/servers
- Support for 1 local and up to 1, 2 or 4 simultaneous remote sessions
- Allow connected computers/servers to be located up to 100 ft. from the KVM using inexpensive Cat5e/6 cabling and a B078-101-USB-1, B078-101-USB2 or B078-101-PS2 server interface module
- Dual serial ports enable connection of serial manageable devices, like PDUs, firewalls and routers, for access over IP
- Dual Ethernet ports provide redundancy in the event of a crash
- Support for virtual media allows access to an .iso file on a SAMBA or NFS server from a target server (requires a B078-101-USB-1 or B078-101-USB2 server interface module)
- Support both IPv4 and IPv6 as well as RADIUS and LDAP/S remote authentication
- Enable control of a target server from any location over a secure IP connection
- Offer a wide range of video and mouse sync settings for optimal remote session performance
- Allow users to assign individual ports on the KVM to a port on a PDU, allowing you to Power Cycle or Power On/Off connected servers without leaving the KVM session screen
- Provide multi-level account access with the ability to add up to 256 accounts
- Allow "system sent" messages to SNMP server to notify of LAN or power failures
- Event log records installation events, such as logins, reboots and changes to network settings
- Support the highest levels of security standards for encryption (128-bit AES and HTTPS)
- Support video resolutions up to 1920 x 1080 (60 Hz)
- Upgradable firmware fine-tunes compatibility with emerging standards



A Power Outlets

B Reset Button

C Serial Ports 1 and 2

D LAN Ports 1 and 2

E Console KVM Ports

F Server Ports

Image shows the back panel of a B072-032-IP4, but the back panel will be functionally the same for all models, with the only difference being the number of power outlets and server ports.

KVM SWITCH SPECIFICATIONS

Model	# of Users (Local/Remote)	PC/Server Ports	Dual Serial Ports	Dual LAN Ports/Power Supplies	IP PDU Control	Interface Modules	PC/Server Compatibility	Warranty
B070-008-19-IP*	1 Local/1 Remote	8 x RJ45 (Female)	YES	YES/NO	YES	B078-Series**	VGA, USB, PS/2	1 year
B070-016-19-IP*	1 Local/1 Remote	16 x RJ45 (Female)	YES	YES/NO	YES	B078-Series**	VGA, USB, PS/2	1 year
B072-008-1-IP	1 Local/1 Remote	8 x RJ45 (Female)	YES	YES/NO	YES	B078-Series**	VGA, USB, PS/2	2 year
B072-016-1-IP	1 Local/1 Remote	16 x RJ45 (Female)	YES	YES/NO	YES	B078-Series**	VGA, USB, PS/2	2 year
B072-016-IP2	1 Local/2 Remote	16 x RJ45 (Female)	YES	YES/YES	YES	B078-Series**	VGA, USB, PS/2	2 year
B072-016-IP4	1 Local/4 Remote	16 x RJ45 (Female)	YES	YES/YES	YES	B078-Series**	VGA, USB, PS/2	2 year
B072-032-IP2	1 Local/2 Remote	32 x RJ45 (Female)	YES	YES/YES	YES	B078-Series**	VGA, USB, PS/2	2 year
B072-032-IP4	1 Local/4 Remote	32 x RJ45 (Female)	YES	YES/YES	YES	B078-Series**	VGA, USB, PS/2	2 year
B072-032-IP2-K	1 Local/2 Remote	32 x RJ45 (Female)	YES	YES/YES	YES	16 USB Dongles included (B078-101-USB-1)	VGA, USB, PS/2	2 year
B072-032-IP4-K	1 Local/4 Remote	32 x RJ45 (Female)	YES	YES/YES	YES	16 USB Dongles included (B078-101-USB-1)	VGA, USB, PS/2	2 year

* Has a built-in 19" LCD console. ** See owner's manual or www.tripplite.com for exact model numbers.

Server Interface Unit (SIU) Specifications

Model	Description	Connectors
B078-101-USB-1	USB SIU	RJ45 (Female), VGA (Male), USB A (Male)
B078-101-USB-8	8 Pack of B078-101-USB-1 USB SIU	RJ45 (Female), VGA (Male), USB A (Male)
B078-101-USB2***	USB SIU with Virtual Media	RJ45 (Female), VGA (Male), (x2) USB A (Male)
B078-101-PS2	PS/2 SIU	RJ45 (Female), VGA (Male), (x2) Mini DIN-6 (Male)

*** Not compatible with all NetCommander Multi-User Cat5 IP KVM Switches. Contact Tripp Lite technical support for information on your model.

Tripp Lite manufactures more than 2,500 IT infrastructure solutions for data centers, server rooms, network closets and other applications. Visit www.tripplite.com for more information.

© 2014 Tripp Lite. All trademarks are the property of their respective owners. Photos may differ slightly from actual products. Tripp Lite has a policy of continuous improvement. Specifications are subject to change without notice. Contact Tripp Lite technical support to confirm specifications for your model.



1111 W. 35th Street, Chicago, IL 60609 • 773.869.1234 • www.tripplite.com

14-07-098 95-3425