



Perfect for  
slot machines,  
ATMs and  
desktops!



## Eaton Tripp Lite series cloud-connected line-interactive UPS

The Tripp Lite series line-interactive UPS provides effective voltage regulation and battery backup with the convenience of cloud-based remote monitoring. Eaton's complimentary remote monitoring application allows even non-experts to easily set up, monitor and manage one or more UPS systems, reducing the need for on-site maintenance checks.

In addition to automatic voltage regulation (AVR), this 750VA UPS has controllable outlets and automatic restart after an outage. It is designed to protect casino gaming machines, ATMs, computers, routers, security systems and digital signage equipment.

### Power and protect IT equipment

#### Simple operation

Begin protecting equipment in just a few moments. Plug the UPS into a properly grounded wall outlet, press the power button and connect equipment to the UPS outlets.

#### Automatic voltage regulation (AVR)

The UPS corrects abnormal voltage conditions without using the battery, increasing battery lifespan and keeping the battery fully charged for outages.

#### Reliable battery backup

When a power outage occurs, the UPS switches to battery to keep connected equipment running. The alarm remains silent in battery mode unless there is a low battery or fault condition. Automatic restart after outages, regardless of battery charge level, reduces the need for site visits. The VRLA battery is user-replaceable, which extends the service life of the UPS.

#### Effective surge protection and line noise filtering

The UPS protects connected devices from the harmful effects of power surges. It also filters electromagnetic and radio frequency interference to help protect devices from hardware damage and data loss.

### Monitor UPS status locally or remotely

#### Convenient status monitoring

Locally, a green LED indicates power and line or battery mode status. An audible alarm and red LED indicate a low battery or fault. Remotely, a user-friendly dashboard and real-time notifications make it easier to identify and resolve issues. Two groups of two outlets can be controlled remotely to reboot unresponsive equipment.

### Enable cloud-based remote monitoring

#### Easy setup and commissioning

To get started, connect the UPS to a local network with an Ethernet cable. Then, scan the QR code on the UPS to install the remote monitoring app on a mobile device or navigate to the provided web address for installation on a desktop computer. Create an account and scan the QR code with the app to add the UPS to your account.

#### Streamlined configuration

Near field communication (NFC) technology allows easy configuration of network settings from a mobile device.

Keep equipment operating and gain peace of mind with remote management



Powering Business Worldwide

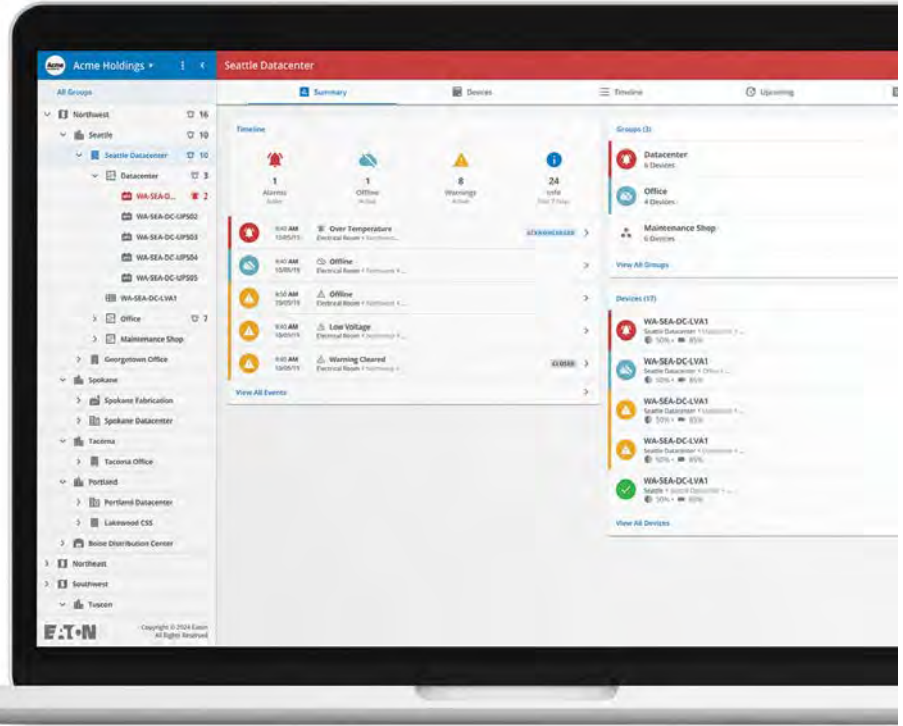
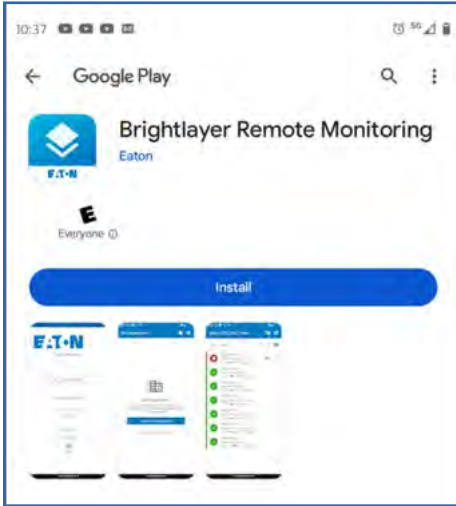
# Cloud-based remote monitoring from anywhere, anytime

The Tripp Lite series cloud-connected line-interactive UPS includes remote monitoring software with an intuitive dashboard that is accessible from a mobile app or web browser. Cloud connectivity enables efficient setup, deployment and management of multiple UPS systems across multiple locations.

Powered by  
**Brightlayer**

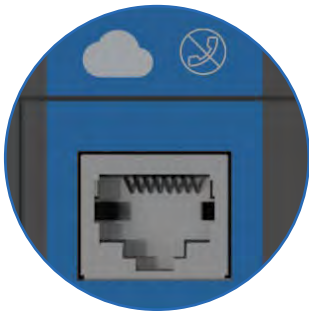
## Cloud-connected UPS enhanced with remote monitoring software

Eaton's cloud-based remote monitoring dashboard offers convenient setup, control and management of a single UPS or a larger deployment. Receive alerts, push configurations, silence alarms or control outlet banks using a mobile app (Android or iOS) or web browser.



## Software key features

- Accessible using a mobile app or web browser
- Two-factor authentication
- Multi-user account management
- UPS onboarding via QR code
- Remote monitoring of UPS power trends
- Remote outlet control (cloud-enabled)
- Near-field communication (NFC) for network configuration
- Fleet (tree) view and sorting
- Remote software firmware upgrades
- Alert notifications and responses via email and SMS
- Audible alarm control
- Event log up to 30 days
- Remote self-test
- Remote outlet groups to track where equipment is plugged in
- Available at no cost for 10 years



### Ethernet communication port

Use an Ethernet cable to connect the UPS to your network. This enables connection to cloud-based remote monitoring.



### Easy setup and commissioning

Scan the QR code on the UPS to download the remote monitoring app on a mobile device. Set up an account and scan the QR code with the app to seamlessly add the UPS to your account. For access on a desktop computer, use the provided web address.



### Near-field communication (NFC) capability

Add the UPS to your network using the mobile app and NFC. Tap the NFC area on the UPS with your mobile device to add the UPS to your network.



### Remote monitoring dashboard

Accessible via mobile device or web browser, the simple color-coded dashboard provides a quick visual indication of device status: alerts (red), warnings (yellow) or normal operation (blue). Alerts can be sent to a mobile device, providing early awareness of issues that can cause downtime.

## Feature focus

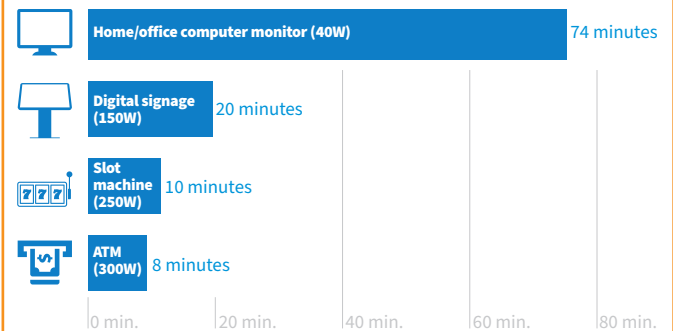


Model: AVR750UNC

- 1 Ethernet port (RJ45)**  
Port connects to a local network.
- 2 USB-C port**  
Port connects to a computer running an SSH server to enable command line interface (CLI) commands.
- 3 QR code label**  
Scanning the QR code facilitates downloading the remote monitoring app and adding the UPS to an account.
- 4 Near-field communication (NFC) area**  
Add the UPS to your network using NFC and an app-enabled mobile device.
- 5 Power button**
- 6 Status LEDs**  
Green LED indicates power is available from the outlets and whether the UPS is in normal (solid green), battery (flashing) or charging (very slow flash) mode. Red LED indicates a low battery or UPS fault.
- 7 Battery- and surge-protected NEMA 5-15R outlets**  
These outlets provide battery backup and surge protection to connected equipment. Four outlets (two groups of two outlets) can be controlled remotely to reboot unresponsive equipment.
- 8 Surge-protected NEMA 5-15R outlets**  
These outlets provide surge protection to connected equipment.
- 9 Circuit breaker**
- 10 Input power cord with NEMA 5-15P plug**
- 11 Keyhole mounting slots**  
Two keyhole slots on the bottom of the UPS enable mounting on a desk, wall or other flat surface.

### Typical runtimes

Runtime varies with load, battery age and other factors.



### ENERGY STAR certified

This cloud-connected UPS system meets strict U.S. Department of Energy and U.S. Environmental Protection Agency requirements. It provides high operational efficiency to help you save on utility costs and protect the environment.



## Specifications

AVR750UNC	
UPS type	Line-interactive
<b>Output</b>	
Output capacity (VA/Watts)	750 VA/450 W
Nominal output voltage	120V
Frequency compatibility	50 or 60 Hz follows the AC input frequency. Battery cold start is 60 Hz only.
Output AC waveform (AC line mode)	Sine wave
Output AC waveform (battery mode)	Modified sine wave
Output receptacles	(6) NEMA 5-15R (surge only) + (6) NEMA 5-15R (surge + battery backup) with two controllable load banks of 2 outlets
<b>Input</b>	
Nominal input voltage	120V
Input voltage range for mains operation (max adjustable range)	89–145 VAC High line set 145V +/- 5%; High line reset 142V +/- 5%; Low line set 89V +/- 5%; Low line reset 92V +/- 5%
Input frequency	50 or 60 Hz +/- 5 Hz (default 60 Hz)
Input connection	NEMA 5-15P, 5 ft. cord
<b>Batteries and runtime</b>	
Battery type	Sealed, maintenance-free, lead-acid
Backup runtime*- full/half load	3 min./11 min.
<b>Communication and management</b>	
Cloud-based monitoring	Yes
Interface ports	Ethernet port allows the UPS to be managed via a network connection. NFC commissioning allows easy transfer of network settings to the UPS. USB-C port enables configuration by command line interface (CLI).
Audible alarm	Yes
<b>Protection characteristics</b>	
UPS AC suppression rating	316 joules
UPS AC suppression response time	Instantaneous
Overload protection	Line mode: 110% ±10%, enters fault after 5 minutes; 120% ±10%, enters fault immediately Battery mode: 110% ±10%, shuts down in 5 seconds; 120% ±10%, shuts down immediately
<b>Physical</b>	
Cabinet type	Flatpack
Cabinet material	Plastic
Battery door	Yes
Dimensions (H x W x D)	4.14 x 7.48 x 12 in. (105 x 190 x 305 mm)
Net weight	15.82 lb. (7.2 kg)
<b>Environment</b>	
Humidity	0-95% RH @ 32 to 104 °F (0 to 40 °C) (non-condensing)
Storage temp./Operating temp.	5 to 122 °F (-15 to 50 °C) / 32 to 104 °F (0 to 40 °C)
<b>Standards and compliance</b>	
Regulatory	CAN/CSA-C22.2 No. 107.3 (Canada); ICES (Canada); NOM (Mexico); UL 1778
Compliance	ENERGY STAR; RoHS; FCC Class B; DOE; CEC
Warranty	3-year limited warranty

Due to continuous improvement programs, specifications are subject to change without notice. The AVR750UNC has \$100,000 Ultimate Lifetime Insurance for connected equipment.  
\* Runtime varies with load, battery age and other factors.



**Eaton**  
1000 Eaton Boulevard  
Cleveland, OH 44122  
United States  
Eaton.com

© 2024 Eaton  
All Rights Reserved  
Printed in USA  
BR153185EN / 24-05-003  
July 2024

Learn more about Tripp Lite series  
cloud-connected UPS systems at  
[TrippLite.Eaton.com](https://TrippLite.Eaton.com)



Follow us on social media to get the latest product and support information.



Eaton is a registered trademark.

All other trademarks are property of their respective owners.