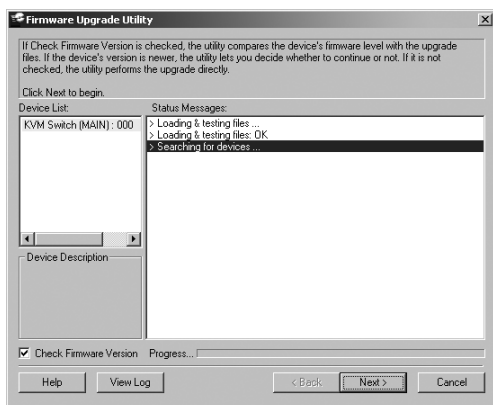


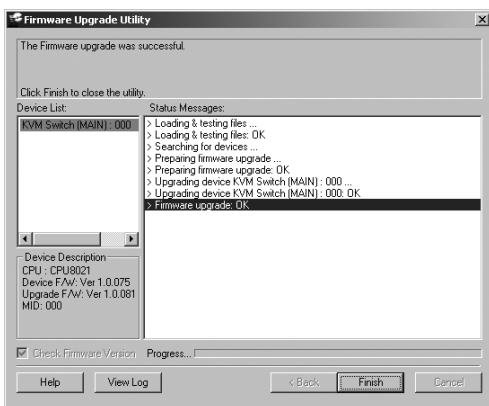
Firmware Upgrade Utility

As firmware upgrades become available, they can be found on the internet at www.triplite.com. To upgrade the firmware of you KVM switch, follow the steps below:

1. From a computer that is not part of your KVM installation, go to www.triplite.com to obtain the firmware upgrade for your KVM switch, and save it to your computer.
2. Using the firmware upgrade cable that came with the B006-VUA4-K-R, connect the cable from the 3.5 mm jack on the back of the switch to a DB9 Serial port on the computer you saved the firmware to.
3. Shut down all of the computers connected to the KVM switch.
4. Invoke *Firmware Upgrade Mode* via the *Firmware Upgrade* function in the OSD F6 Settings Page. (See page 21 for details.)
5. On the computer the firmware upgrade file is saved to, run the *Firmware Upgrade Utility* file by double-clicking on it or by opening up a command line and typing in the path to it. The utilities welcome page appears:



6. After reading the license agreement, click on the **I Agree** option and click **Next**. The *Firmware Upgrade Utility* main screen appears and displays the KVM switch in the *Device List* on the left side of the screen.



Firmware Upgrade Utility continued

7. Highlight the KVM switch in the *Device List* by clicking on it with the mouse. If you want the *Firmware Upgrade Utility* to check the KVM's firmware version to see if it is older/newer than the firmware upgrade file, check the *Check Firmware Version* box in the lower-left of the screen. If you want the *Firmware Upgrade Utility* to upload the firmware upgrade file without checking the KVM's firmware version, leave this box unchecked. Click **Next**.
8. If the *Check Firmware Version* box is checked, and the *Firmware Upgrade Utility* finds the KVM's firmware is newer than that of the firmware upgrade file, you will be prompted to continue or cancel. Once the firmware upgrade starts, status messages appear in the *Status Message* panel and progress towards completion is shown in the *Progress Bar*. When the upgrade is complete, the *Status Message* panel will inform you that the firmware upgrade was ok. At this point, click **Finish** to complete the firmware upgrade. After a successful firmware upgrade, the switch will reset itself.