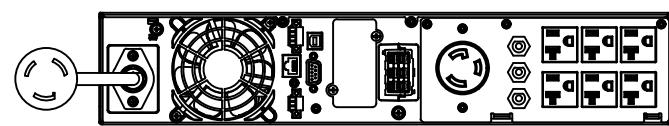
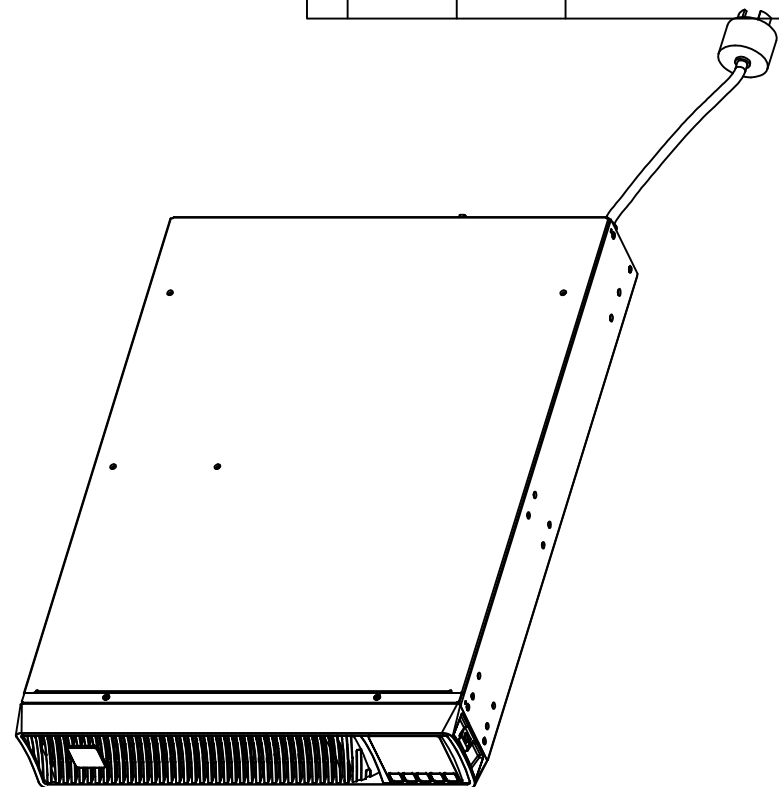
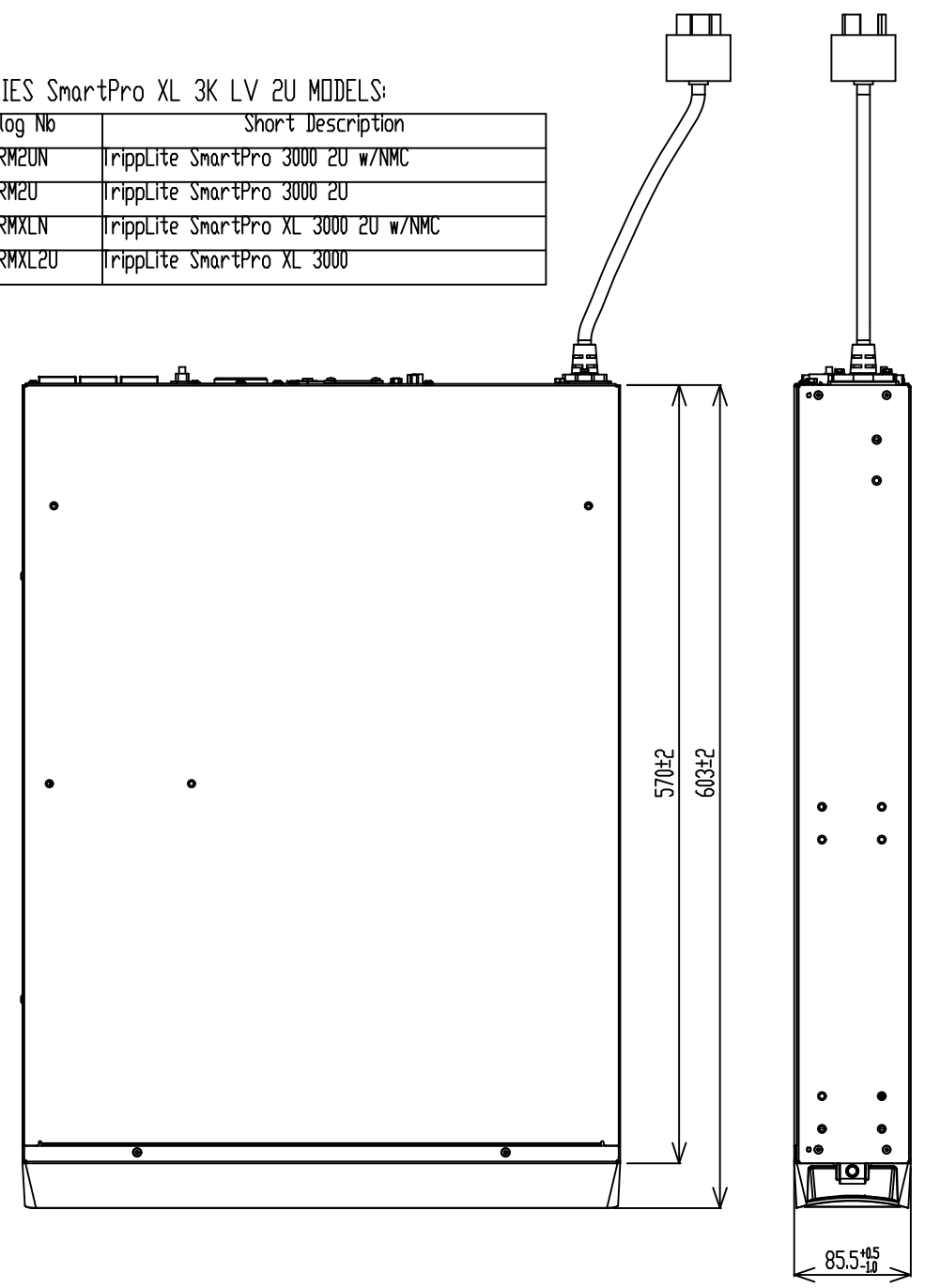


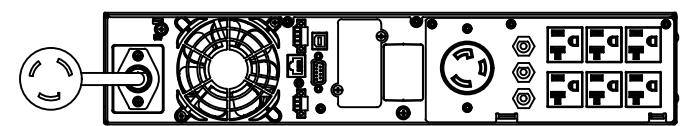
REV	DATE	ECD-CODE	MODIFICATION	PREPARED	APPROVED
00	27-May-2022		FIRST ISSUE	Sheng,Xiangyu	Yi,Xiangyong

Notes:
THIS DRAWING APPLIES SmartPro XL 3K LV 2U MODELS:

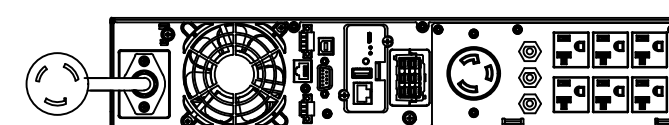
Mfg ID	Catalog No	Short Description
9210-8140	SMART3000RM2UN	TrippLite SmartPro 3000 2U w/NMC
9210-8141	SMART3000RM2U	TrippLite SmartPro 3000 2U
9210-8142	SMART3000RMXLN	TrippLite SmartPro XL 3000 2U w/NMC
9210-8143	SMART3000RMXL2U	TrippLite SmartPro XL 3000



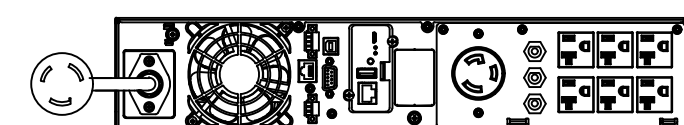
9210-8143-Rear Panel View



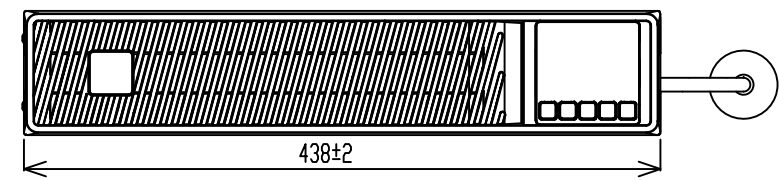
9210-8141-Rear Panel View(without battery connector)



9210-8142-Netpack Model Rear Panel View



9210-8140-Netpack Model Rear Panel View(without battery connector)



METRIC		EATON CORPORATION		
<small>THIRD ANGLE PROJECTION</small>				
<small>DIMENSIONS ARE IN MILLIMETERS AFTER PLATING, DIMENSIONS AND TOLERANCES IN ACCORDANCE WITH ASME Y14.5M-1994. SEE NOTES FOR TOLERANCES.</small>				
DESCRIPTION: SmartPro XL 3K LV 2U model				
ORIGINATED:	Sheng,Xiangyu	27-May-2022	ECD:	NAME:
MODIFIED:				REVISION:
CHECKED:			DOCUMENT TYPE:	STATE:
SAFETY:			PRO-E DRAWING	
APPROVED:	Yi,Xiangyong	27-May-2022		
<small>EATON CORPORATION - CONFIDENTIAL AND PROPRIETARY NOTICE TO PERSONS RECEIVING THIS DOCUMENT AND/OR TECHNICAL INFORMATION</small>				
<small>THIS DOCUMENT, INCLUDING THE DRAWING AND INFORMATION CONTAINED THEREIN, IS CONFIDENTIAL AND IS THE EXCLUSIVE PROPERTY OF EATON CORPORATION, AND IS HEREBY ON LOAN AND SUBJECT TO RECALL BY EATON AT ANY TIME. BY TAKING POSSESSION OF THIS DOCUMENT, THE RECIPIENT ACKNOWLEDGES AND AGREES THAT THIS DOCUMENT CANNOT BE USED IN ANY MANNER ADVERSE TO THE INTERESTS OF EATON AND THAT NO PORTION OF THIS DOCUMENT MAY BE COPIED OR OTHERWISE REPRODUCED WITHOUT THE PRIOR WRITTEN CONSENT OF EATON. IN THE CASE OF CONFLICTING CONTRACTUAL PROVISIONS, THIS NOTICE SHALL GOVERN THE STATUS OF THIS DOCUMENT.</small>				
				SIZE: A3 SCALE: 0.200 SHEET: 1 OF 1