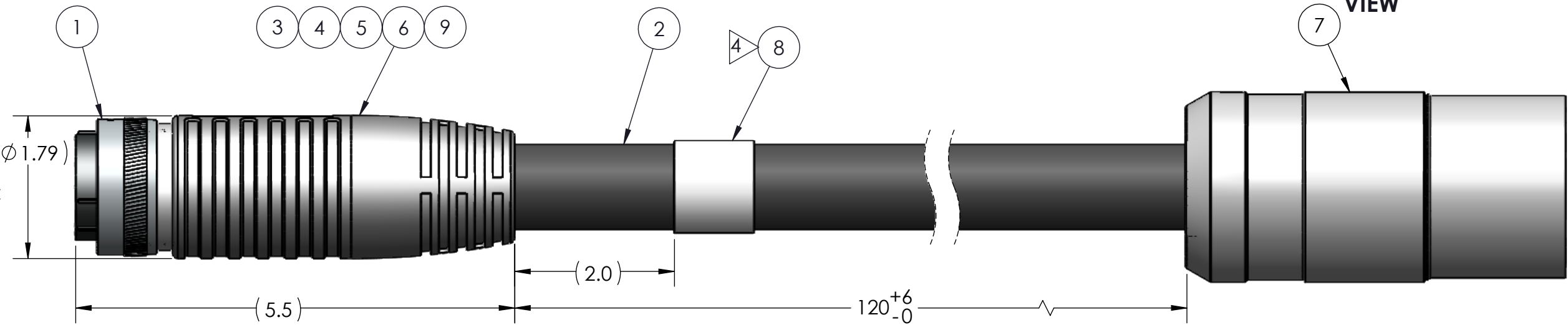
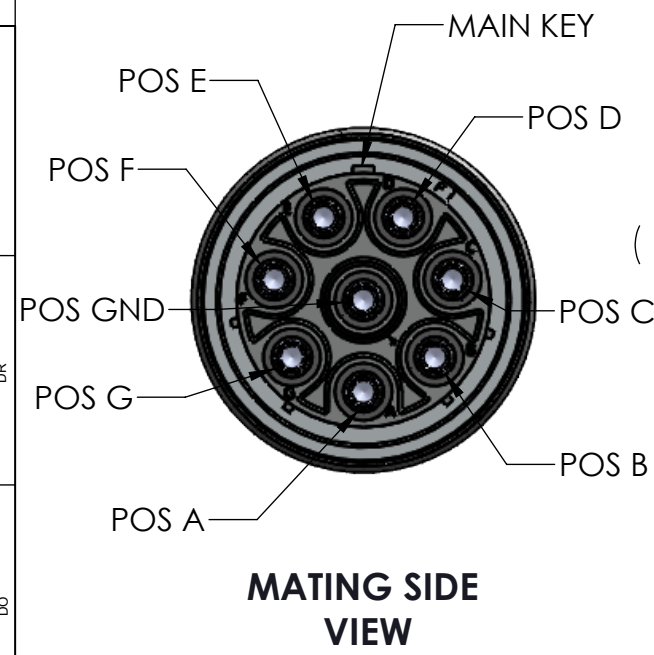
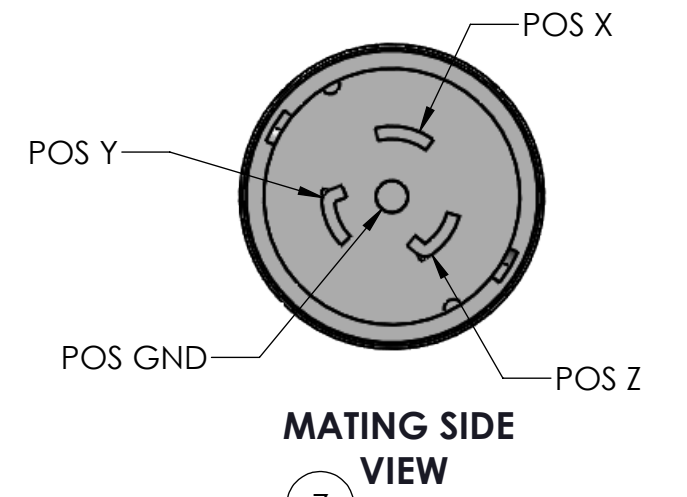


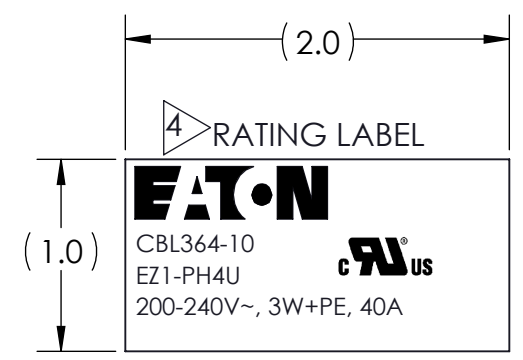
REVISIONS				
REV.	DESCRIPTION	DATE	BY	APPROVED
A	INITIAL RELEASE	2/24/2022	LR	EB
B	UPDATED PER CR-0100763 & CO-0189493	1/24/2023	LR	EB

DELTA	CABLE WIRING DIAGRAM			
	UTG6248SNR		CONN CS8365	
CIRCUIT	POS	WIRE	WIRE	POS
240V CIRCUIT #1	A	BLACK	BLACK	X
240V CIRCUIT #3	F	BLACK		
240V CIRCUIT #2	B	WHITE	WHITE	Y
240V CIRCUIT #1	E	WHITE		
240V CIRCUIT #3	C	RED	RED	Z
240V CIRCUIT #2	D	RED		
PROTECTIVE EARTH	G	GREEN	GREEN	GND
PROTECTIVE EARTH	GND	GREEN		



- NOTES:
- WORKMANSHIP STANDARDS AND INSPECTION CRITERIA ARE IN ACCORDANCE WITH IPC/WHMA-A-620 CLASS-2.
 - INSPECTION REQUIREMENTS 100% AFTER ASSEMBLY:
 - 2.1 VISUAL
 - 2.2 ALL CIRCUITS CONTINUITY, SHORTS & OPENS.
 - 2.3 ON EACH PRODUCTION UNIT PERFORM DWV (HI-POT) TEST 1500VAC OR 2100VDC.
 - DIMENSIONAL INSPECTION PER AQL.

- PACKAGE MUST BE MARKED PER ePDUG4-0040 v1.1 SPEC.
- EACH CORDSET SHALL BE INDIVIDUALLY WRAPPED IN A LARGE BUBBLE BAG. CABLE ASSEMBLIES SHALL BE PACKAGED WITH TWO PER BOX. EACH BOX WILL HAVE DIMENSIONS OF 17" X 17" X 5".
- ALL MATERIALS ARE RoHS AND UL COMPLIANT.
- CORDSET QUALIFICATIONS:
 - UL 817 (UL FILE NUMBER: E529492)
 - CSA C22.2 No. 21



ITEM NO.	DESCRIPTION	QTY.	UM
9	PRIMER	A/R	GL
8	WRAP AROUND LABEL 6" X 2"	1	EA
7	CONNECTOR CS8365	1	EA
6	OVERMOLD MATERIAL	A/R	LB
5	P38 PTYPE SLEEVE	3	EA
4	BACKSHELL UTG	1	EA
3	FEMALE POWER CONTACT	8	EA
2	CABLE 6/4 W TYPE 2000V UL LISTED	A/R	FT
1	UTG6248SNR 8 POS UTG CONNECTOR	1	EA

FOR LABELING, SEE LABEL INFO. USE WRAP AROUND LABEL (NO FLAG) AT INDICATED LOCATION AROUND THE CABLE. THE LABEL WILL CONTAIN EATON LOGO, CABLE MODEL NUMBER, REGULATORY MODEL NUMBER, INPUT VOLTAGE/CURRENT RATING (LETTER POINT SIZE: 9) AND UL RECOGNIZED MARK 5mm MIN HEIGHT.

CLIENT DOCUMENT APPROVAL	
X REVIEWED NO EXCEPTIONS	SIGNATURE & DATE:
REVIEWED EXCEPTIONS NOTED	
REVISE & RESUBMIT	COMPANY NAME:
REJECTED	

THE SIGNATURE ABOVE INDICATES THE CLIENT'S AUTHORIZED REPRESENTATIVE HAS REVIEWED, UNDERSTANDS AND CONCURS WITH THE REQUIREMENTS DEFINED HEREIN (I.E., DRAWINGS, SPECIFICATION, TEST REPORT, ETC.). IF THE TECHNICAL DOCUMENTATION IS A PRODUCT DRAWING AND NO SIGNATURE IS PROVIDED, THE PLACEMENT OF A PURCHASE ORDER BY THE CLIENT IS CONSIDERED DRAWING ACCEPTANCE.

UNLESS OTHERWISE SPECIFIED ALL DIMENSIONS ARE IN INCHES
DECIMAL TOLERANCE:
X = ± 0.1 XX = ± 0.01 XXX = 0.005
ANGLE TOLERANCE: ± 2°
BREAK EDGE: 0.015 MAX
FILLET RADII: R0.015 MAX

CONTRACT NO. _____

DRAWN BY	DATE
LR	11/5/2021
CHECKED BY	DATE
EB	11/5/2021
APPROVED BY	DATE
AR	11/5/2021

THIRD ANGLE PROJECTION

REFERENCE DWGS: ePDUG4-0040 v1.1 SPEC

EATON 1740 COMMERCE WAY, PASO ROBLES, CA 93446
Powering Business Worldwide

PART NO.: **CBL364-10**

DESCRIPTION: **CABLE ASSY UNIV CS8365 10FT UL**

SIZE B	CAGE CODE 09922	DWG. NO. S100871	REV B
--------	-----------------	------------------	-------

SCALE: NONE SHT 1 OF 1