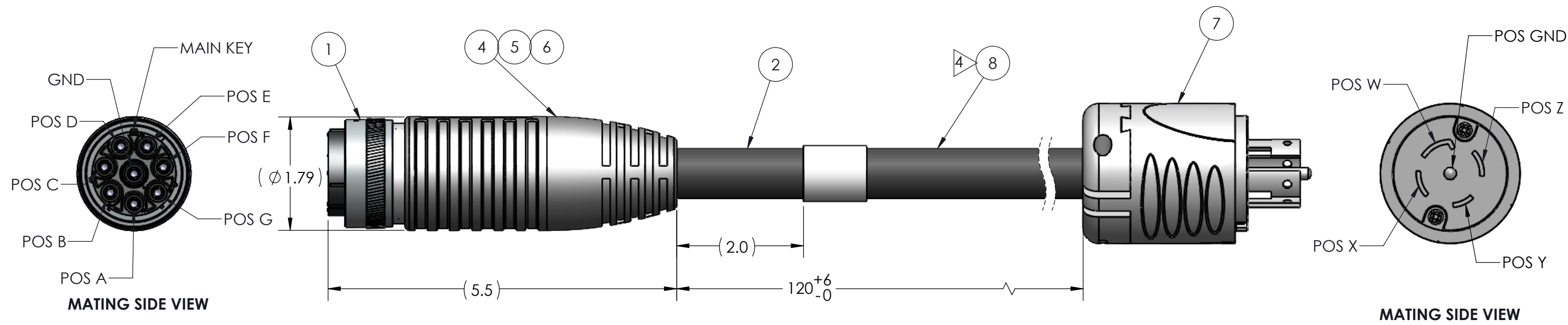


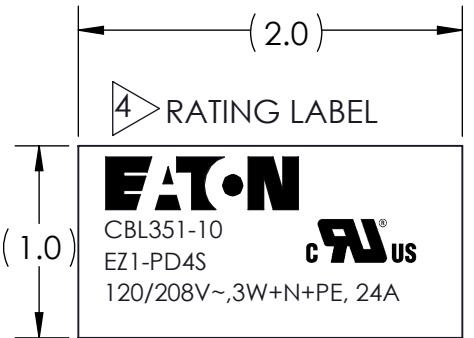
REVISIONS				
REV.	DESCRIPTION	DATE	BY	APPROVED
A	INITIAL RELEASE	1/20/2022	LR	EB
B	UPDATED PER CR-0100763 & CO-0189493	1/10/2022	LR	EB

DELTA	CABLE WIRING DIAGRAM				
	UTSG6248SP1B		L21-30P NEMA		
CIRCUIT	POS	WIRE	WIRE	LINE	POS
240V CIRCUIT #1	A	BLACK	BLACK	L1	X
240V CIRCUIT #3	F	BLACK			
240V CIRCUIT #2	B	WHITE	WHITE	L2	Y
240V CIRCUIT #1	E	WHITE			
240V CIRCUIT #3	C	RED	RED	L3	Z
240V CIRCUIT #2	D	RED			
N/A	G	N/A (CONTACT FILLED)	N/A	NEUTRAL	W
PROTECTIVE EARTH	GND	GREEN	GREEN	PE	GND



- NOTES:
- WORKMANSHIP STANDARDS AND INSPECTION CRITERIA ARE IN ACCORDANCE WITH IPC/WHMA-A-620 CLASS-2.
 - INSPECTION REQUIREMENTS 100% AFTER ASSEMBLY:
 - VISUAL
 - ALL CIRCUITS CONTINUITY, SHORTS & OPENS.
 - ON EACH PRODUCTION UNIT PERFORM DWV (HI-POT) TEST 1500 VAC OR 2100 VDC.
 - DIMENSIONAL INSPECTION PER AQL.

- PACKAGE MUST BE MARKED PER ePDUG4-0040 v1.1 SPEC.
- EACH CORDSET SHALL BE INDIVIDUALLY WRAPPED IN A LARGE BUBBLE BAG. CABLE ASSEMBLIES SHALL BE PACKAGED WITH TWO PER BOX. EACH BOX WILL HAVE DIMENSIONS OF 17" X 17" X 5".
- ALL MATERIALS ARE RoHS AND UL COMPLIANT.
- CORDSET QUALIFICATIONS:
 - UL 817 (UL FILE NUMBER: E529492)
 - CSA C22.2 No. 21



ITEM NO.	DESCRIPTION	QTY.	UM
9	PRIMER	A/R	GL
8	WRAP AROUND LABEL 3.75" X 2"	1	EA
7	CONN L21-30P	1	EA
6	OVERMOLD MATERIAL	A/R	LB
5	P22 PTYPE SLEEVE	3	EA
4	BACKSHELL UTG	1	EA
3	FEMALE POWER CONTACT	8	EA
2	CABLE 10/4 SOOW UL, CSA, 90C, 600V	TBD	FT
1	UTG6248SNR 8 POS UTG CONNECTOR	1	EA

4 FOR LABELING, SEE LABEL INFO. USE WRAP AROUND LABEL (NO FLAG) AT INDICATED LOCATION AROUND THE CABLE. THE LABEL WILL CONTAIN EATON LOGO, CABLE MODEL NUMBER, REGULATORY MODEL NUMBER, INPUT VOLTAGE/CURRENT RATING (LETTER POINT SIZE: 9) AND UL RECOGNIZED MARK 5 mm MIN HEIGHT.

CLIENT DOCUMENT APPROVAL	
X	OPTION
	REVIEWED NO EXCEPTIONS
	REVIEWED EXCEPTIONS NOTED
	REVISE & RESUBMIT
	REJECTED

SIGNATURE & DATE:

COMPANY NAME:

INTERPRET THIS DRAWING IN ACCORDANCE WITH ASME Y14.5M-2009

THIRD ANGLE PROJECTION

PART LIST / BILL OF MATERIALS				
UNLESS OTHERWISE SPECIFIED ALL DIMENSIONS ARE IN INCHES		CONTRACT NO.		
DECIMAL TOLERANCE: X = ± 0.1 XX = ± 0.01 XXX = 0.005		DRAWN BY	DATE	
ANGLE TOLERANCE: ± 2°		LR	11/4/2021	
BREAK EDGE: 0.015 MAX		CHECKED BY	DATE	
FILLET RADII: R0.015 MAX		EB	11/4/2021	
		APPROVED BY	DATE	
		AR	11/4/2021	
REFERENCE DWGS: ePDUG4-0040 v1.1 SPEC		PART NO.: CBL351-10		
DESCRIPTION: CABLE ASSY UNIV L21-30P 10FT UL				
SIZE B	CAGE CODE 09922	DWG. NO. S100845	REV B	
SCALE: NONE			SHT 1 OF 1	

THE INFORMATION CONTAINED IN THIS DRAWING IS CONFIDENTIAL AND MAY NOT BE DISCLOSED WITHOUT WRITTEN CONSENT FROM EATON LTD.
 CLASSIFICATION NO-JC-RQ
 JURISDICTION DR
 COUNTRY DO
 THIS DRAWING IS A CONTROLLED DOCUMENT FOR EATON INTERCONNECT. IT IS SUBJECT TO CHANGE WITHOUT NOTIFICATION. CONTACT THE DOCUMENT CONTROL CENTER FOR THE LATEST REVISION.