



Eaton Tripp Lite series cloud-connected standby UPS

Enhance operational efficiency and gain peace of mind with remote management

Ideal for IT professionals and non-experts alike, the Tripp Lite series standby UPS provides simple battery backup with the convenience of cloud-based remote monitoring. With Eaton's complimentary remote monitoring application, users can easily set up, monitor and manage one or several UPS systems, reducing the need for on-site maintenance checks.

Available in 350 VA, 600 VA and 850 VA models, the UPS has manageable outlets, automatic restart and flexible mounting options. It is designed to protect equipment such as retail point-of-sale (POS) systems, kiosks, home office devices and Wi-Fi access points.

Power and protect IT equipment

Simple operation

Begin protecting equipment in just a few moments. Plug the UPS into a properly grounded wall outlet, press the power button and connect equipment to the UPS outlets.

Reliable, low-maintenance battery backup

When power problems or interruptions occur, the UPS switches to battery to power and protect equipment. The alarm remains silent in battery mode unless there is a low battery or fault condition. Automatic restart after outages, regardless of battery charge level, reduces the need for site visits. The VRLA battery is user-replaceable, which extends the service life of the UPS.

Effective surge protection and line noise filtering

The UPS protects connected devices from the harmful effects of power surges. It also filters electromagnetic and radio frequency interference to help protect devices from hardware damage and data loss.

Durable construction

The hardened housing allows use in locations with elevated temperatures or humidity.

Monitor UPS status locally or remotely

Easy status monitoring

Locally, a green LED indicates power and line or battery mode status. An audible alarm and a red LED indicate a low battery or a fault condition.

Remotely, a user-friendly dashboard and real-time notifications make it easier to oversee large deployments and resolve issues before downtime occurs.



Enable cloud-based remote monitoring

Easy setup and commissioning

Getting started with remote monitoring is straightforward. Connect the UPS to a local network with a user-supplied Ethernet cable. Then, scan the QR code on the UPS to install the remote monitoring app on a mobile device or navigate to the provided web address for installation on a desktop computer. Create an account and scan the QR code with the app to add the UPS to your account.

Streamlined configuration

Near field communication (NFC) technology allows easy configuration of network settings from a mobile device.

Easily mount the UPS

Compact housing with versatile mounting options

The input power cord, outlets, communication ports, power button and status LEDs are all on the same side for easy access in shelf installations.

- Small footprint facilitates desktop or floor placement.
- Keyhole slots enable wall mounting and are spaced in a 100 x 100 mm VESA pattern for mounting to the back of a monitor. Mounting screws are included.
- Attachment points allow the UPS to be secured to a shelf or beam with user-supplied cable ties.



Product support

Eaton provides free product support via phone, email or chat. If you have a question or need to find a replacement battery, Eaton can help.

EATON

Powering Business Worldwide

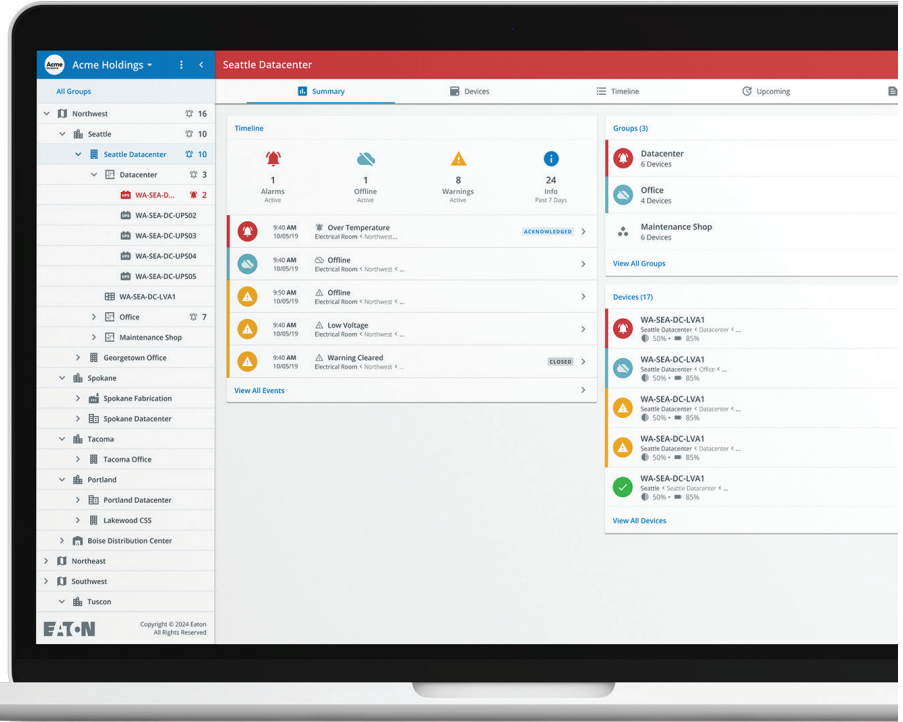
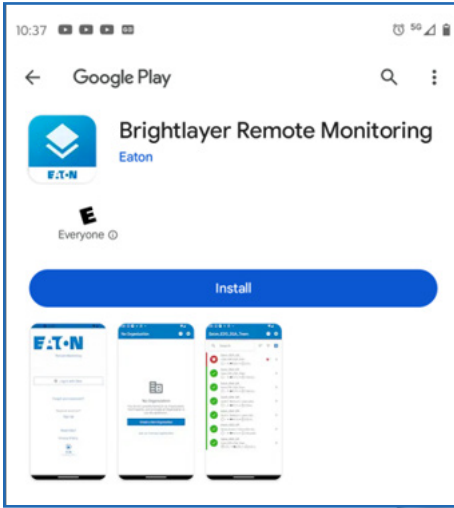
Cloud-based remote monitoring from anywhere, anytime

The Tripp Lite series cloud-connected standby UPS includes remote monitoring software with an intuitive dashboard that is accessible from a mobile app or web browser. Cloud connectivity enables efficient setup, deployment and management of multiple UPS systems across multiple locations.

Powered by
Brightlayer

Cloud-connected UPS enhanced with remote monitoring software

Eaton's cloud-based remote monitoring dashboard offers convenient setup, control and management of a single UPS or a larger deployment. Receive alerts, push configurations, silence alarms or control outlet banks using a mobile app or web browser.



Software key features

- Accessible using a mobile app or web browser
- Two-factor authentication
- Multi-user account management
- UPS onboarding via QR code
- Remote monitoring of UPS power trends
- Remote outlet control (cloud-enabled)
- Near-field communication (NFC) for network configuration
- Fleet (tree) view and sorting
- Remote software firmware upgrades
- Alert notifications and responses via email and SMS
- Audible alarm control
- Event log up to 30 days
- Remote self-test
- Remote outlet groups to track where equipment is plugged in
- Available at no cost for 10 years



Ethernet communication port
Use an Ethernet cable to connect the UPS to your network. This enables connection to cloud-based remote monitoring.



Easy setup and commissioning
Scan the QR code on the UPS to download the remote monitoring app on a mobile device. Set up an account and scan the QR code with the app to seamlessly add the UPS to your account. For access on a desktop computer, use the provided web address.

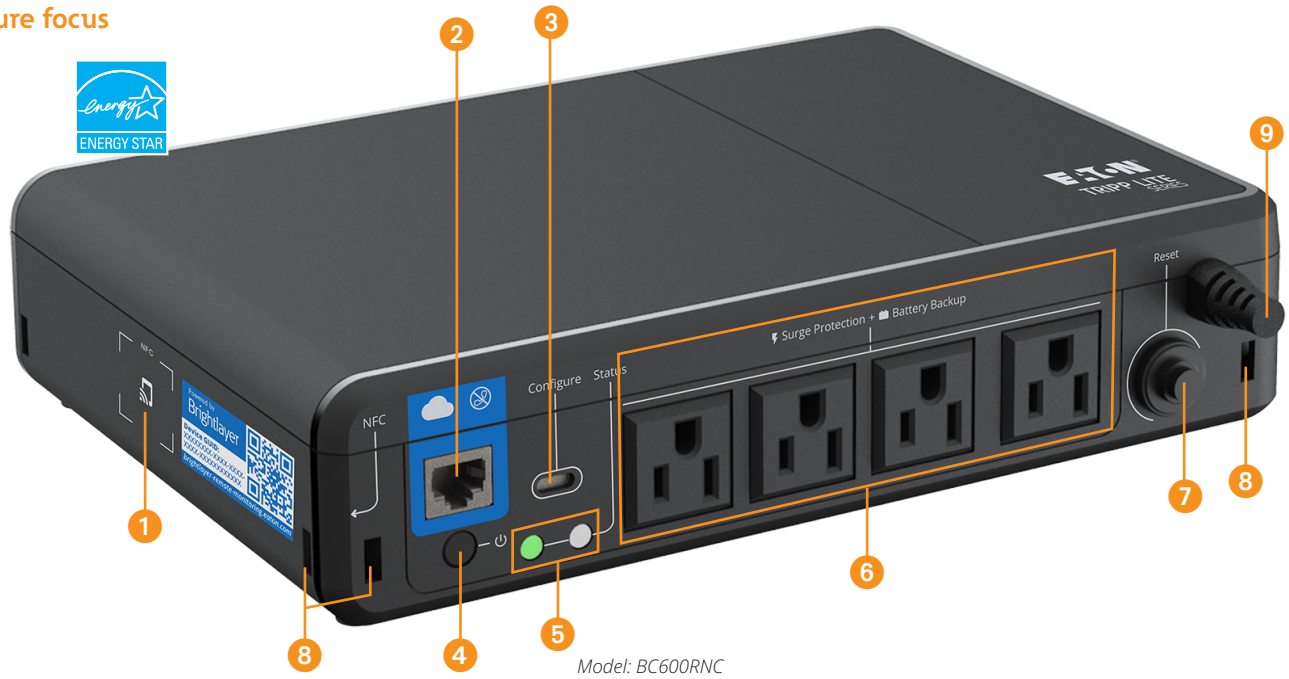


Near-field communication (NFC) capability
Add the UPS to your network using the mobile app and NFC. Tap the NFC area on the UPS with your mobile device to add the UPS to your network.

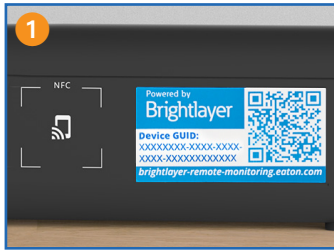


Remote monitoring dashboard
Accessible via mobile device or web browser, the simple color-coded dashboard provides a quick visual indication of device status: alerts (red), warnings (yellow) or normal operation (blue). Alerts can be sent to a mobile device, providing early awareness of issues that can cause downtime.

Feature focus



Model: BC600RNC

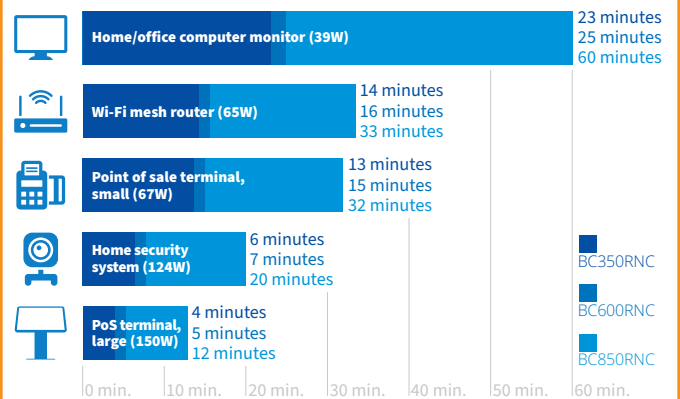


- 1 Near-field communication (NFC) area**
Add the UPS to your network using NFC and an app-enabled mobile device.
- 2 Ethernet port (RJ45)**
Port connects to a local network.
- 3 USB-C port**
Port connects to a computer running an SSH server to enable command line interface (CLI) commands.
- 4 Power button**
- 5 Status LEDs**
Green LED indicates power is available from the outlets and whether the UPS is in normal (solid green) or battery (flashing) mode. Red LED indicates a low battery or UPS fault.
- 6 NEMA 5-15R outlets**
Outlets provide surge protection and battery backup to connected equipment. The outlets can be controlled remotely to reboot unresponsive equipment.
- 7 Circuit breaker**
- 8 Secure attachment points**
The bottom and corners of the UPS have openings to secure user-supplied cable ties for cable management or vertical or horizontal mounting of the UPS.

- 9 Input power cord with NEMA 5-15P plug**
- 10 Keyhole mounting slots**
Four slots in a 100 x 100 mm VESA pattern on the bottom of the UPS enable mounting to a wall or the back of a monitor.

Typical runtimes

Runtime varies with load, battery age and other factors.



ENERGY STAR certified

This cloud-connected UPS system meets strict U.S. Department of Energy and U.S. Environmental Protection Agency requirements. It provides high operational efficiency to help you save on utility costs and protect the environment.

Specifications



	BC350RNC	BC600RNC	BC850RNC
UPS type	Standby	Standby	Standby
Output			
Output capacity (VA/Watts)	350 VA/210 W	600 VA/300 W	850 VA/450 W
Nominal output voltage details	120V	120V	120V
Frequency compatibility	50 or 60 Hz follows the AC input frequency. Battery cold start is 60 Hz only.		
Output AC waveform (AC line mode)	Sine wave		
Output AC waveform (battery mode)	Modified sine wave		
Output receptacles	(3) NEMA 5-15R (surge + battery backup)	(4) NEMA 5-15R (surge + battery backup)	(5) NEMA 5-15R (surge + battery backup)
Input			
Nominal input voltage	120V	120V	120V
Input voltage range for main operations (max adjustable range)	95–145 VAC High line set 145V +/- 5%; High line reset 140V +/- 5%; Low line set 95V +/- 5%; Low line reset 100V +/- 5%		
Input frequency	50 or 60 Hz +/- 3 Hz (default 60 Hz)		
Input connection	NEMA 5-15P, 5 ft. cord		
Batteries and runtime			
Battery type	Sealed, maintenance-free, lead-acid		
Backup runtime*- full/half load	2 min./7 min.	1.2 min./5 min.	1.7 min./8 min.
Communication and management			
Cloud-based monitoring	Yes		
Interface ports	Ethernet port allows the UPS to be managed via a network connection. NFC commissioning allows easy transfer of network settings to the UPS. USB-C port enables configuration by command line interface (CLI).		
Audible alarm	Yes	Yes	Yes
Protection characteristics			
UPS AC suppression rating	190 joules		
UPS AC suppression response time	Instantaneous		
Overload protection	Line mode: 110%, enters fault after 5 minutes; 120%, enters fault immediately Battery mode: 110%, shuts down in 5 seconds; 120%, shuts down immediately		
Physical			
Cabinet type	Flatpack - all ports/outlets on same side		
Cabinet material	Plastic	Plastic	Plastic
Battery door	Yes	Yes	Yes
Dimensions (H x W x D)	2.28 x 10.04 x 7.09 in. (58 x 255 x 180 mm)		3.15 x 11.02 x 7.09 in. (80 x 280 x 180 mm)
Net weight	4.6 lb. (2.1 kg)	4.8 lb. (2.2 kg)	7 lb. (3.2 kg)
Environment			
Humidity	0-95% RH @ 32 to 104 °F (0 to 40 °C) (non-condensing)		
Storage temp./Operating temp.	5 to 122 °F (-15 to 50 °C) / 32 to 122 °F (0 to 50 °C)		
Standards and compliance			
Regulatory	CAN/CSA-C22.2 No. 107.3 (Canada); ICES (Canada); NOM (Mexico); UL 1778		
Compliance	ENERGY STAR; ROHS; FCC Class B; DOE; CEC		
Warranty	3-year limited warranty		

Due to continuous improvement programs, specifications are subject to change without notice. Models have \$100,000 Ultimate Lifetime Insurance for connected equipment.
* Runtime varies with load, battery age and other factors.

For more information, scan the QR code
or contact your Eaton sales representative.



Eaton
1000 Eaton Boulevard
Cleveland, OH 44122
United States
Eaton.com

© 2024 Eaton
All Rights Reserved
Printed in USA
BR153178EN / 23-11-053
May 2024

Eaton is a registered trademark.
All other trademarks are property
of their respective owners.

Follow us on social media to get the
latest product and support information.

