



Eaton Tripp Lite series cloud-connected lithium-ion standby UPS

Long-lasting power protection for distributed IT and edge environments

The Tripp Lite series standby UPS offers lithium-ion battery backup and cloud connectivity in a compact 1U form factor. With a long battery lifespan, the UPS offers a low-maintenance battery backup solution for network closets, edge installations, security/surveillance centers, retail environments and branch offices.

Cloud-based remote monitoring

Brightlayer-powered remote monitoring and management:

Included cloud-based remote monitoring software, powered by Eaton's Brightlayer platform, allows easy monitoring, control and management from anywhere via mobile app or web browser.

Integrated Ethernet port: Built-in RJ45 Ethernet port connects the UPS to the Internet, enabling cloud connectivity out of the box.

Advanced data analytics: Provides insights into power usage and performance trends to help optimize operations and reduce costs.

Streamlined configuration: Near-field communication (NFC) technology allows easy configuration of network settings from a mobile device.

Improved uptime: Ensures continuous operation by minimizing downtime through proactive monitoring and quick issue resolution.

Cost-effectiveness: Remote monitoring software is included at no additional cost.

Applications

Distributed IT and edge networks: Protect switches, routers and other networking devices from power disturbances.

Security/surveillance centers: Safeguard monitoring equipment from damage due to power problems.

Retail and point-of-sale systems: Provide battery backup for networking devices and point-of-sale systems.

Branch and remote offices: Maintain productivity by safeguarding workstations, VoIP systems and other essential office equipment.

Industrial IoT and automation: Prevent downtime for critical network equipment.

Power protection for IT equipment

Reliable standby protection: UPS switches to lithium-ion battery backup to protect connected equipment during power fluctuations and provide time to safely shut down equipment during blackouts. Automatic restart after power outages, regardless of battery charge level, reduces the need for costly site visits.

Advantages of lithium-ion battery backup: Lithium iron phosphate (LFP) batteries have two to three times longer service life than comparable lead-acid batteries. They also weigh less and charge to full capacity faster than lead-acid batteries.

Simple and efficient operation

Main outlets: Two non-switchable outlets remain continuously on whenever the UPS is operational, ensuring a reliable power supply to critical devices.

Switchable load banks: Two load banks with two outlets each can be switched on/off or cycled remotely, reducing the need for on-site visits to reboot devices.

Compact design: 1U form factor optimizes rack space. Flexible mounting options for tower and wall mounting (wall-mounting bracket sold separately) facilitate installation and integration.

Energy efficiency: Optimizes power usage, reducing energy consumption and operational costs while maintaining performance.



Gain peace of mind with lithium-ion battery backup and remote management.



Powering Business Worldwide

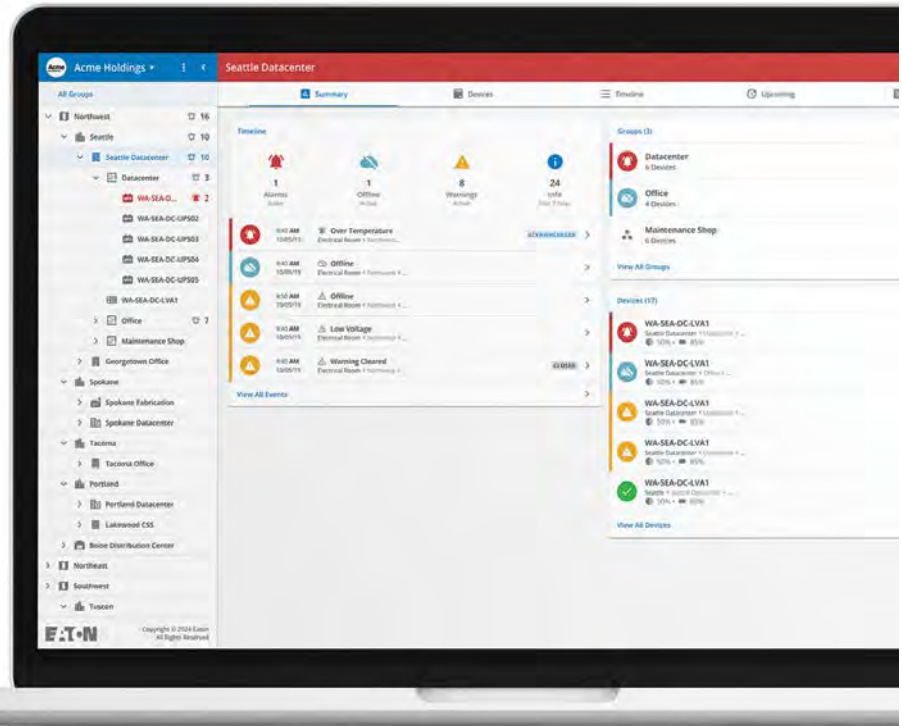
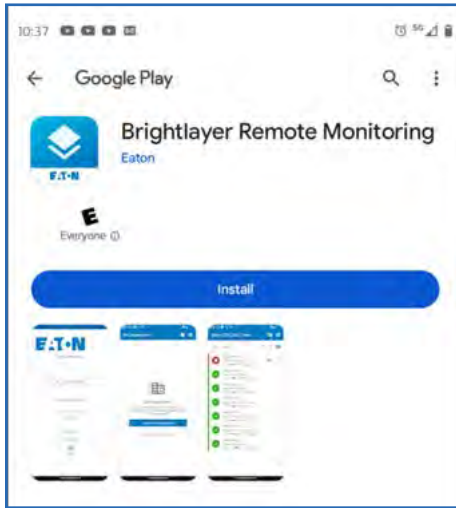
Cloud-based remote monitoring from anywhere, anytime

The Tripp Lite series cloud-connected lithium-ion standby UPS includes remote monitoring software with an intuitive dashboard that is accessible from a mobile app or web browser. Cloud connectivity enables efficient setup, deployment and management of multiple UPS systems across multiple locations.

Powered by
Brightlayer

Cloud-connected UPS enhanced with remote monitoring software

Eaton's cloud-based remote monitoring dashboard offers convenient setup, control and management of a single UPS or a larger deployment. Receive alerts, push configurations, silence alarms or control outlet banks using a mobile app (Android or iOS) or web browser.



Software key features

- Accessible using a mobile app or web browser
- Two-factor authentication
- Multi-user account management
- UPS onboarding via QR code
- Remote monitoring of UPS power trends
- Remote outlet control (cloud-enabled)
- Near-field communication (NFC) for network configuration
- Fleet (tree) view and sorting
- Remote software firmware upgrades
- Alert notifications and responses via email and SMS
- Audible alarm control
- Event log up to 30 days
- Remote self-test
- Remote outlet groups to track where equipment is plugged in
- Available at no cost for 10 years



Ethernet communication port

Use an Ethernet cable to connect the UPS to your network. This enables connection to cloud-based remote monitoring.



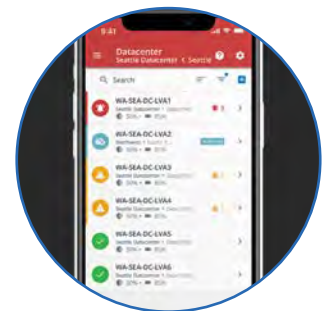
Easy setup and commissioning

Scan the QR code on the UPS to download the remote monitoring app on a mobile device. Set up an account and scan the QR code with the app to seamlessly add the UPS to your account. For access on a desktop computer, use the provided web address.



Near-field communication (NFC) capability

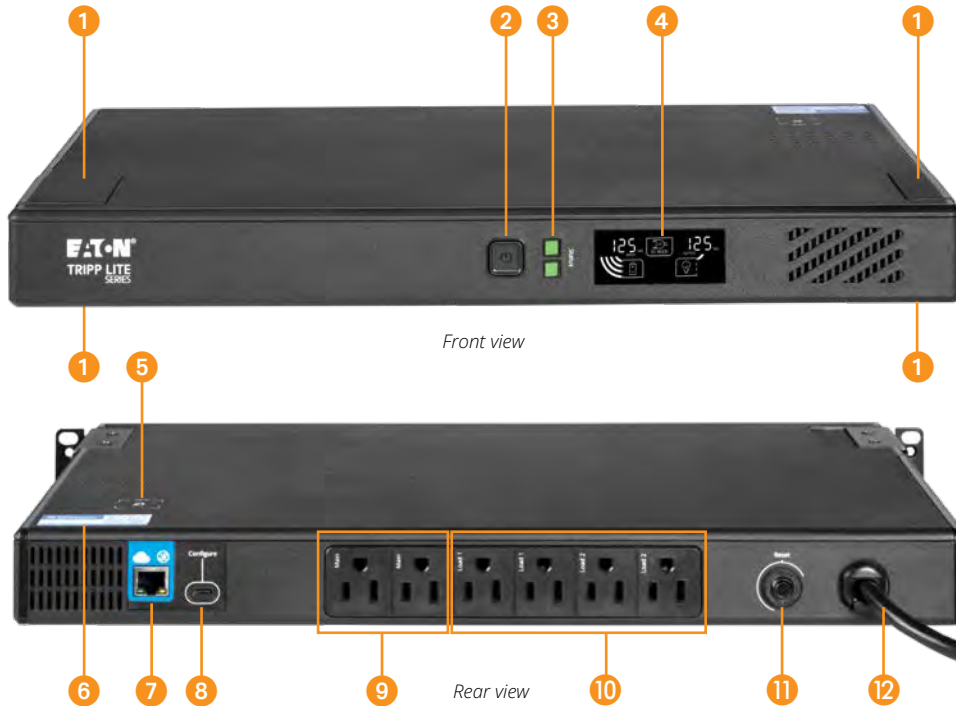
Add the UPS to your network using the mobile app and NFC. Tap the NFC area on the UPS with your mobile device to add the UPS to your network.



Remote monitoring dashboard

Accessible via mobile device or web browser, the simple color-coded dashboard provides a quick visual indication of device status: alerts (red), warnings (yellow) or normal operation (blue). Alerts can be sent to a mobile device, providing early awareness of issues that can cause downtime.

Feature focus



Optional wall-mounting brackets - SRWALLBRKT2U, SRWALLBRKT4U and SRWALLBRKT6U (sold separately)



1 Mounting hole covers

Remove the covers to reveal mounting holes to support the included mounting ears for installation in a two-post or four-post rack. The mounting ears are also required for tower and wall-mount installations. Wall-mounting brackets are sold separately.

2 On/Off button

3 Status LEDs

Green LED indicates the battery is fully charged (solid green) or the battery is charging (flashing green). Red LED indicates a UPS fault.

4 Multifunction LCD control panel

Front-panel LCD reports detailed voltage, runtime, load and battery information.

5 Near-field communication (NFC) area

Add the UPS to your network using NFC and an app-enabled mobile device.

6 QR code label

Scanning the QR code facilitates downloading the remote monitoring app and adding the UPS to an account.

7 Ethernet port (RJ45)

Port connects to a local network.

8 USB-C port

Port connects the UPS to a computer running an SSH server to enable command line interface (CLI) commands.

9 Main outlets (battery- and surge-protected)

Non-switchable NEMA 5-15R outlets provide power whenever the UPS is operational.

10 Switched outlet banks (battery- and surge-protected)

Two switched load banks (two NEMA 5-15R outlets per bank) can be controlled remotely to reboot unresponsive equipment.

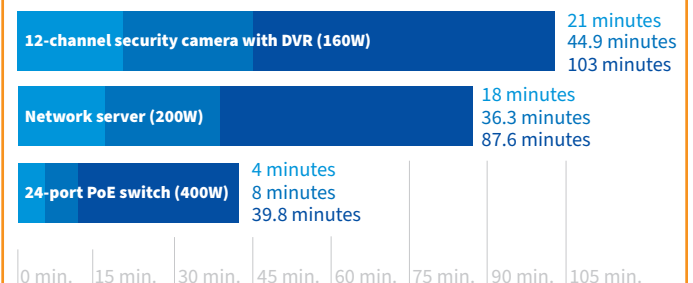
11 Circuit breaker

12 Input power cord with NEMA 5-15P plug

Typical runtimes

Runtime varies with load, battery age and other factors.

■ BC500RT1ULNC
■ BC1000RT1ULNC
■ BC1500RT1ULNC



ENERGY STAR certified

This cloud-connected UPS system meets strict U.S. Department of Energy and U.S. Environmental Protection Agency requirements. It provides high operational efficiency to help you save on utility costs and protect the environment.

SPECIFICATIONS

	BC500RT1ULNC	BC1000RT1ULNC	BC1500RT1ULNC
UPS type	Standby	Standby	Standby
Output			
Output capacity (VA/Watts)	500 VA/400 W	1000 VA/750 W	1440 VA/1050 W
Nominal output voltage details	120V		
Frequency compatibility	50 or 60 Hz follows the AC input frequency. Battery cold start is 60 Hz only.		
Output AC waveform (AC line mode)	Sine wave		
Output AC waveform (battery mode)	Modified sine wave		
Output receptacles	(6) NEMA 5-15R (surge + battery backup)		
Controllable outlet banks	Load bank 1: 2 outlets; Load bank 2: 2 outlets		
Input			
Nominal input voltage	120V		
Input voltage range for mains operation (max adjustable range)	95-145V		
Input frequency	50 or 60 Hz auto-sensing		
Input connection	NEMA 5-15P, 5 ft. cord		
Batteries and runtime			
Battery type	Lithium-ion (LFP)		
Expandable runtime	No		
Backup runtime*- full/half load	3 min./14 min.	1.5 min./8 min.	2 min./12 min.
DC system voltage (VDC)	12V	25V	38V
User interface, alerts and control			
LCD screen	Yes (White text on black)		
LED functions (color)	Green: line mode; Red: fault		
Switch functions (type)	On/Off and Mute		
Alarms (function)	Low battery and fault		
Alarm default	Temporary mute		
Communication and management			
Cloud-based monitoring	Yes		
Interface ports	Ethernet port allows the UPS to be managed via a network connection. NFC commissioning allows easy transfer of network settings to the UPS. USB-C port enables configuration by command line interface (CLI).		
Audible alarm	Yes		
Protection characteristics			
UPS AC suppression rating	158 joules		
UPS AC suppression response time	Instantaneous		
Overload protection	Line mode: 110% (+/-10%), enters fault after 5 minutes; 120% (+/-10%), enters fault immediately. Battery mode: 110% (+/-10%), shuts down in 5 seconds; 120% (+/-10%), shuts down immediately.		
Physical			
Cabinet type	1U rack-mount		
Cabinet material	Plastic		
Battery door	Yes		
Dimensions (H x W x D)	1.73 x 17.24 x 8.27 in. (44 x 438 x 210 mm)	1.73 x 17.24 x 12.40 in. (44 x 438 x 315 mm)	1.73 x 17.24 x 12.40 in. (44 x 438 x 315 mm)
Net weight	5.73 lb. (2.6 kg)	9.26 lb. (4.2 kg)	11.9 lb. (5.4 kg)
Environment			
Humidity	0-95% RH @ 32 to 104 °F (0 to 40 °C) (non-condensing)		
Storage temp./Operating temp.	32 to 122 °F (0 to 50 °C) / 32 to 104 °F (0 to 40 °C)		
Standards and compliance			
Regulatory	CAN/CSA-C22.2 No. 107.3 (Canada); ICES (Canada); NOM (Mexico); UL 1778		
Compliance	ENERGY STAR; RoHS; FCC Class B		
Warranty	5-year limited warranty		

Due to continuous improvement programs, specifications are subject to change without notice. * Runtime varies with load, battery age and other factors.

Eaton
1000 Eaton Boulevard
Cleveland, OH 44122
United States
Eaton.com

© 2025 Eaton
All Rights Reserved
Printed in USA
BR153239EN / 24-05-280
September 2025

EATON
Powering Business Worldwide

Learn more about Tripp Lite series
cloud-connected UPS systems at
TrippLite.Eaton.com



Follow us on social media to get the latest product and support information.



Eaton is a registered trademark.

All other trademarks are property of their respective owners.