



Eaton Tripp Lite series cloud-connected line-interactive tower UPS

The Tripp Lite series line-interactive tower UPS provides effective voltage regulation, reliable battery backup and convenient cloud-based remote monitoring. With Eaton's complimentary remote monitoring application, even non-experts can easily set up, monitor and manage one or more UPS systems from any remote location, reducing the need for on-site maintenance checks.

Automatic voltage regulation (AVR), manageable outlets and automatic restart after an outage make these tower UPS systems a smart choice for protecting office equipment, point-of-sale terminals, digital signage and high-end video gaming setups.

Power and protect IT equipment

Simple operation

Begin protecting equipment in just a few moments. Plug the UPS into a properly grounded wall outlet, press the power button and connect equipment to the UPS outlets.

Automatic voltage regulation (AVR)

The UPS corrects abnormal voltage conditions without using the battery, increasing battery lifespan and keeping the battery fully charged for outages.

Reliable battery backup

When a power outage occurs, the UPS switches to battery and continues to deliver power to equipment connected to the battery backup outlets. The alarm remains silent in battery mode unless there is a low battery or fault condition. Automatic restart after outages, regardless of battery charge level, reduces the need for site visits. The VRLA battery is user-replaceable, which extends the service life of the UPS. The SMART1500LCDTXC supports an external battery pack (sold separately) for additional battery runtime.

Effective surge protection and line noise filtering

The UPS protects connected devices from the harmful effects of power surges. It also filters electromagnetic and radio frequency interference to help protect devices from hardware damage and data loss.

Monitor UPS status locally or remotely

Convenient status monitoring

Locally, a green LED indicates power and line or battery mode status. An audible alarm and a red LED indicate a low battery or fault. Remotely, a user-friendly dashboard and real-time notifications make it easy to identify and resolve issues. Two groups of two outlets can be controlled remotely to reboot unresponsive equipment.

Enable cloud-based remote monitoring

Easy setup and commissioning

To get started, connect the UPS to a local network with an Ethernet cable. Then, scan the QR code on the UPS to install the remote monitoring app on a mobile device or navigate to the provided web address for installation on a desktop computer. Create an account and scan the QR code with the app to add the UPS to your account.

Streamlined configuration

Near-field communication (NFC) technology allows easy configuration of network settings from a mobile device.

Power and protect office equipment, POS terminals and touchscreens.



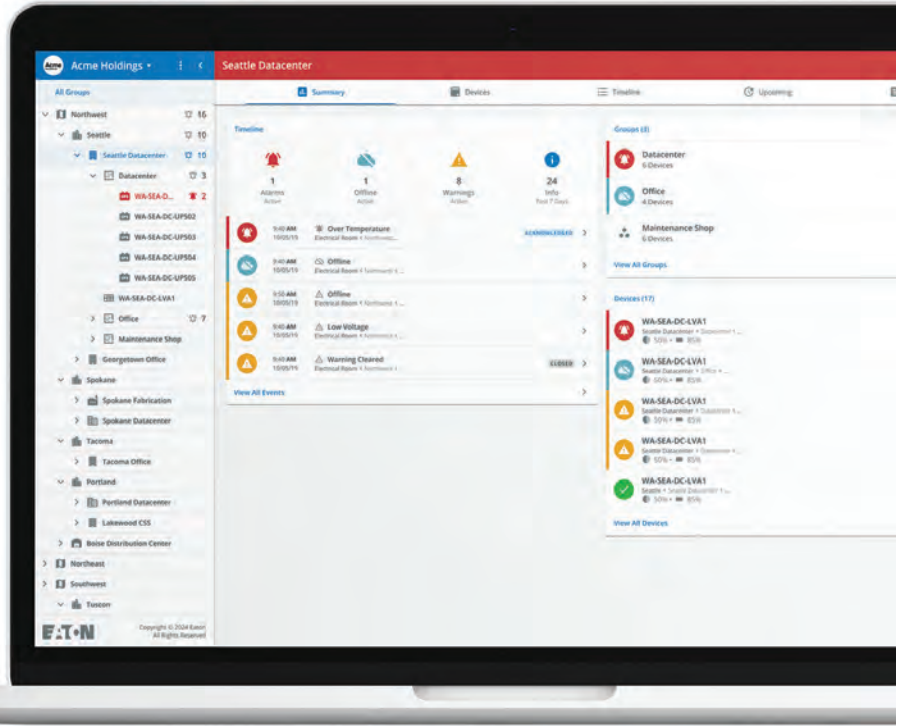
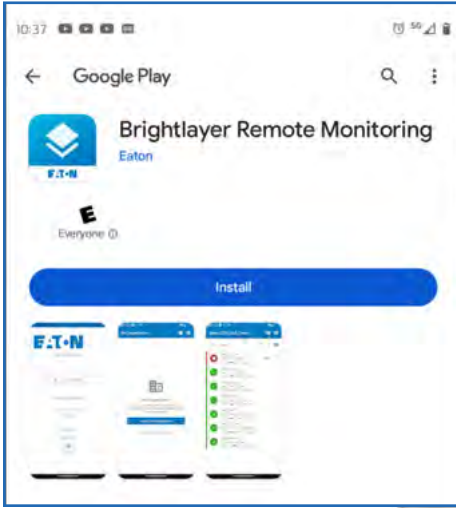
Cloud-based remote monitoring from anywhere, anytime

The Tripp Lite series cloud-connected line-interactive UPS includes remote monitoring software with an intuitive dashboard that is accessible from a mobile app or web browser. Cloud connectivity enables efficient setup, deployment and management of multiple UPS systems across multiple locations.

Powered by
Brightlayer

Cloud-connected UPS enhanced with remote monitoring software

Eaton's cloud-based remote monitoring dashboard offers convenient setup, control and management of a single UPS or a larger deployment. Receive alerts, push configurations, silence alarms or control outlet banks using a mobile app (Android or iOS) or web browser.



Software key features

- Accessible using a mobile app or web browser
- Two-factor authentication
- Multi-user account management
- UPS onboarding via QR code
- Remote monitoring of UPS power trends
- Remote outlet control (cloud-enabled)
- Near-field communication (NFC) for network configuration
- Fleet (tree) view and sorting
- Remote software firmware upgrades
- Alert notifications and responses via email and SMS
- Audible alarm control
- Event log up to 30 days
- Remote self-test
- Remote outlet groups to track where equipment is plugged in
- Available at no cost for 10 years



Ethernet communication port

Use an Ethernet cable to connect the UPS to your network. This enables connection to cloud-based remote monitoring.



Easy setup and commissioning

Scan the QR code on the UPS to download the remote monitoring app on a mobile device. Set up an account and scan the QR code with the app to seamlessly add the UPS to your account. For access on a desktop computer, use the provided web address.



Near-field communication (NFC) capability

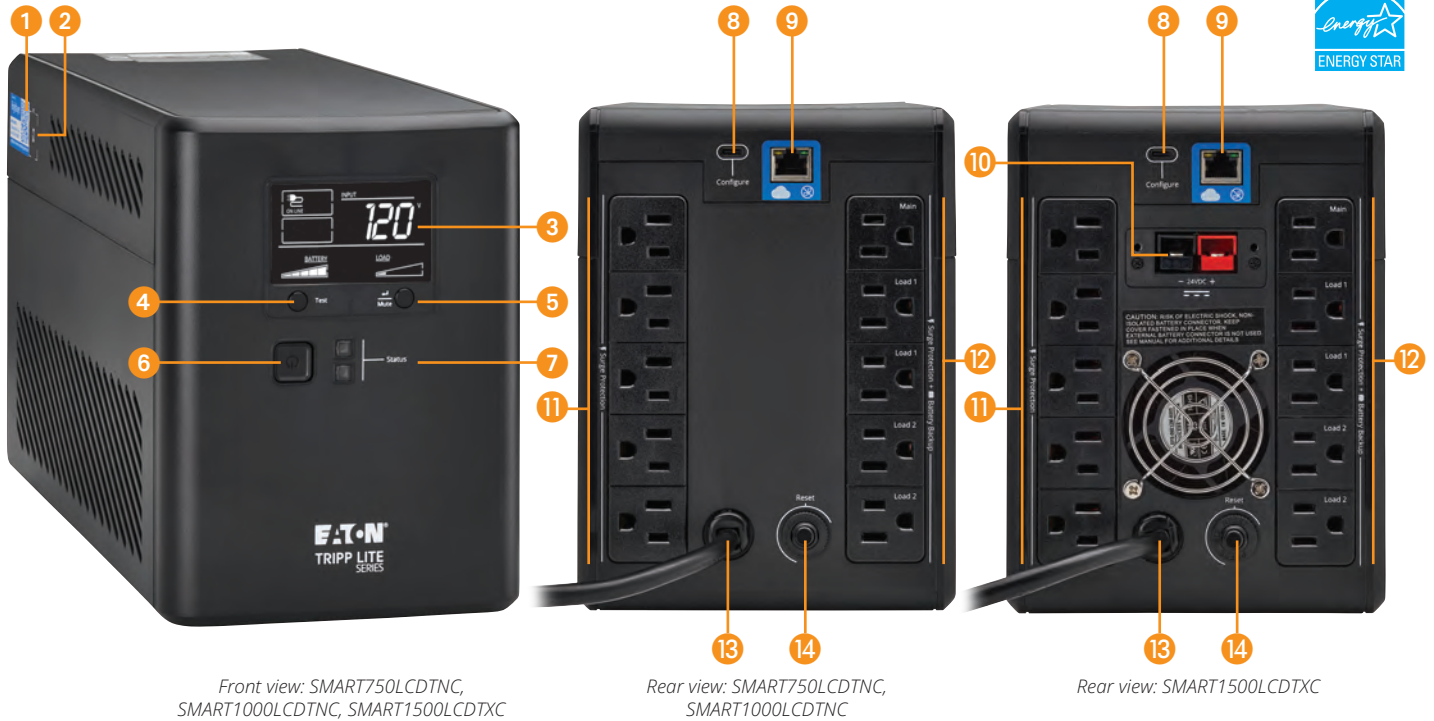
Add the UPS to your network using the mobile app and NFC. Tap the NFC area on the UPS with your mobile device to add the UPS to your network.



Remote monitoring dashboard

Accessible via mobile device or web browser, the simple color-coded dashboard provides a quick visual indication of device status: alerts (red), warnings (yellow) or normal operation (blue). Alerts can be sent to a mobile device, providing early awareness of issues that can cause downtime.

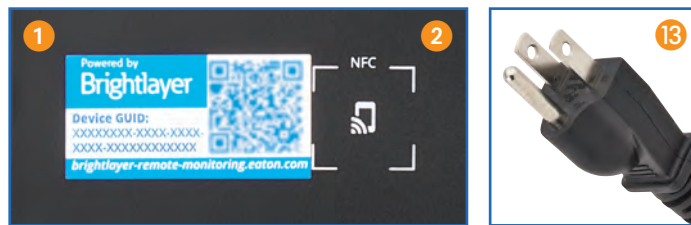
Feature focus



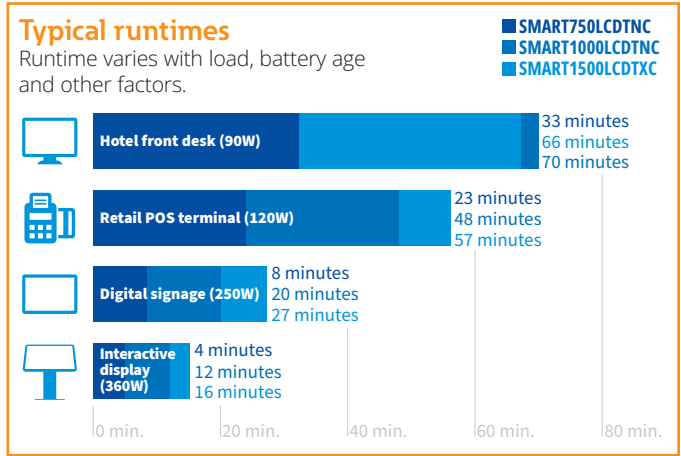
Front view: SMART750LCDTNC, SMART1000LCDTNC, SMART1500LCDTNC

Rear view: SMART750LCDTNC, SMART1000LCDTNC

Rear view: SMART1500LCDTNC



- 1 QR code label**
Scanning the QR code facilitates downloading the remote monitoring app and adding the UPS to an account.
- 2 Near-field communication (NFC) area**
Add the UPS to your network using NFC and an app-enabled mobile device.
- 3 Multifunction LCD control panel**
Front-panel LCD reports detailed voltage, runtime, load and battery information.
- 4 Test button**
- 5 Mute/Select button**
- 6 Power button**
- 7 Status LEDs**
Green LED indicates the battery is fully charged (solid green) or the battery is charging (flashing green). Red LED indicates a UPS fault.
- 8 USB-C port**
Port connects to a computer running an SSH server to enable command line interface (CLI) commands.
- 9 Ethernet port (RJ45)**
Port connects to a local network.
- 10 External battery connectors**
When the connectors are not in use, a retention bracket (included) covers the connectors.
- 11 Surge-protected NEMA 5-15R outlets**
These outlets provide surge protection to connected equipment.
- 12 Battery- and surge-protected NEMA 5-15R outlets**
These outlets provide battery backup and surge protection to connected equipment. Four outlets (two groups of two outlets) can be controlled remotely to reboot unresponsive equipment.
- 13 Input power cord with NEMA 5-15P plug**
- 14 Circuit breaker**



Specifications

| | SMART750LCDTNC | SMART1000LCDTNC | SMART1500LCDTXC |
|--|---|--|---|
| UPS type | Line-interactive | Line-interactive | Line-interactive |
| Output | | | |
| Output capacity (VA/Watts) | 750 VA/500 W | 1000 VA/600 W | 1440 VA/1000 W |
| Nominal output voltage | 120V | 120V | 120V |
| Frequency compatibility | 50 or 60 Hz follows the AC input frequency. Battery cold start is 60 Hz only. | | |
| Output AC waveform (AC line mode) | Sine wave | | |
| Output AC waveform (battery mode) | PWM sine wave | | |
| Output receptacles | (5) NEMA 5-15R (surge only); (5) NEMA 5-15R (surge + battery backup) with two controllable load banks of 2 outlets | | |
| Input | | | |
| Nominal input voltage | 120V | 120V | 120V |
| Input voltage range for main operations (max adjustable range) | 89–145 VAC High line set 145V +/- 5%; High line reset 140V +/- 5%; Low line set 89V +/- 5%; Low line reset 92V +/- 5% | | |
| Input frequency | 50 or 60 Hz +/- 3 Hz (default 60 Hz) | | |
| Input connection | NEMA 5-15P, 5 ft. cord | | |
| Batteries and runtime | | | |
| Battery type | Sealed, maintenance-free, lead-acid (VRLA) | | |
| Expandable runtime | – | – | Yes, BP24V15RT2U external battery sold separately |
| Backup runtime* - full/half load | 2.2 min./8.3 min. | 4 min./14.3 min. | 2 min. (6.3 min. with external battery)/10 min. |
| DC system voltage (VDC) | 12V | 24V | 24V |
| Indicators and switches | | | |
| LCD screen | Yes (White text on black) | Yes (White text on black) | Yes (White text on black) |
| LED functions (color) | Green: line mode; Red: fault | Green: line mode; Red: fault | Green: line mode; Red: fault |
| Switch functions (type) | Test, Mute | Test, Mute | Test, Mute |
| Alarms (function) | Power failure, low battery and overload | Power failure, low battery and overload | Power failure, low battery and overload |
| Alarm default | Temporary mute | Temporary mute | Temporary mute |
| Communication and management | | | |
| Cloud-based monitoring | Yes | Yes | Yes |
| Interface ports | Ethernet port allows the UPS to be managed via a network connection. NFC commissioning allows easy transfer of network settings to the UPS. USB-C port enables configuration by command line interface (CLI). | | |
| Audible alarm | Yes | Yes | Yes |
| Protection characteristics | | | |
| UPS AC suppression rating | 360 joules | | |
| UPS AC suppression response time | Instantaneous | | |
| Overload protection (+/-10%) | Line mode: 110%, enters fault after 5 minutes; 120%, shuts down and enters fault immediately. Battery mode: 110% shuts down in 5 seconds; 120% shuts down immediately. | | |
| Physical | | | |
| Cabinet type | Tower | Tower | Tower |
| Cabinet material | Plastic | Plastic | Plastic |
| Battery door | Yes | Yes | Yes |
| Dimensions (H x W x D) | 7.87 x 5.91 x 14.57 in. (200 x 150 x 370 mm) | 7.87 x 5.91 x 14.57 in. (200 x 150 x 370 mm) | 7.87 x 5.91 x 14.57 in. (200 x 150 x 370 mm) |
| Net weight | 17.64 lb. (8 kg) | 22.93 lb. (10.4 kg) | 28.66 lb. (13 kg) |
| Environment | | | |
| Humidity | 0-95% RH @ 32 to 104 °F (0 to 40 °C) (non-condensing) | | |
| Storage temp./Operating temp. | 5 to 122 °F (-15 to 50 °C) / 32 to 104 °F (0 to 40 °C) | | |
| Standards and compliance | | | |
| Regulatory | CAN/CSA-C22.2 No. 107.3 (Canada); ICES (Canada); NOM (Mexico); UL 1778 | | |
| Compliance | ENERGY STAR; RoHS; FCC Class B; DOE | | |
| Warranty | 3-year limited warranty | | |

Due to continuous improvement programs, specifications are subject to change without notice. These UPS systems have \$250,000 Ultimate Lifetime Insurance for connected equipment.

* Runtime varies with load, battery age and other factors.

Learn more about Tripp Lite series
cloud-connected UPS systems at
TrippLite.Eaton.com



Eaton
1000 Eaton Boulevard
Cleveland, OH 44122
United States
Eaton.com

© 2024 Eaton
All Rights Reserved
Printed in USA
BR153196EN / 24-05-277
December 2024

Eaton is a registered trademark.

All other trademarks are property of their respective owners.

Follow us on social media to get the latest product and support information.

